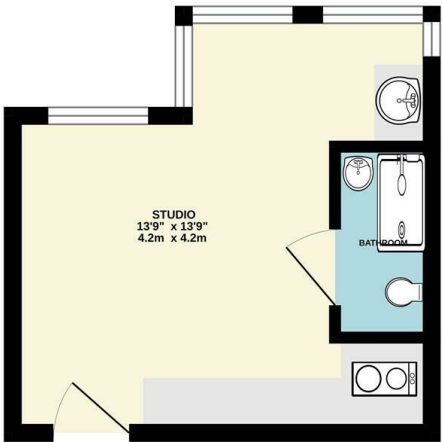




GROUND FLOOR
171 sq.ft. (15.9 sq.m.) approx.



TOTAL FLOOR AREA: 171 sq.ft. (15.9 sq.m.) approx.
While every effort has been made to ensure the accuracy of the foregoing information, measurements of plots, windows, doors and any other items are approximate and no responsibility is taken for any error, omission or mis-statement. This plan is for guidance only and should be used in conjunction with the property particulars. The services, systems and appliances shown on the plan are not intended to be a guarantee as to their operability or efficiency can be given. Please refer to the relevant documents for further details.

Council: Waltham Forest | Council Tax Band: | Floor Area: sq ft

Energy Efficiency Rating		
	Current	Potential
Very energy efficient - lower running costs		
(92 plus) A		
(81-91) B		
(69-80) C		
(55-68) D		
(39-54) E		
(21-38) F		
(1-20) G		
Not energy efficient - higher running costs		
England & Wales	EU Directive 2002/91/EC	



The Agent has not tested any apparatus ,equipment, fixtures and fittings or services and so cannot verify that they are in working order or fit for the purpose. A buyer is advised to obtain verification from their solicitor or surveyor.
References to the tenure of a property are based on information supplied by the seller. The agent has not had the sight of the title documents. A buyer is advised to obtain verification from their solicitors.

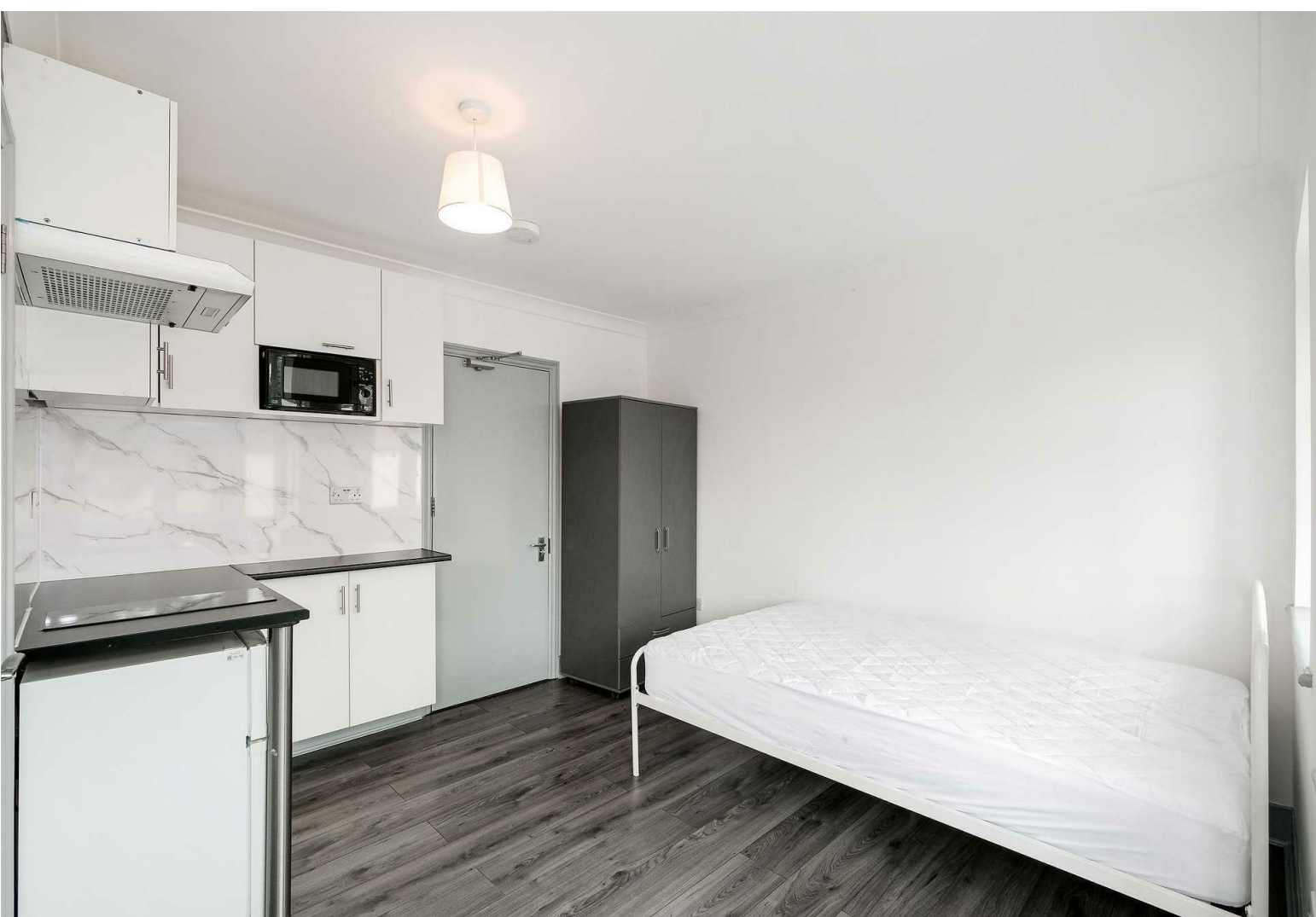


Goldsmith Road, London, E10 5HA
£1,095 Per Calendar Month

Bedrooms: 1 | Reception Rooms: 1 | Bathrooms: 1



Request a Viewing: **0208 503 6060** Email: **walthamstow@churchill-estates.co.uk**



Available Now: Furnished/Unfurnished Studio Apartment with All Bills Included, including WiFi (Coin-Operated Washing Machine/Dryer)

Churchill Estates is delighted to present this contemporary studio apartment, offering both furnished and unfurnished options to suit your preferences. Boasting a private shower room and a kitchen complete with its own hob, the unit also grants access to the communal garden. Recently refurbished to ensure modern comfort.

Ideally situated in close proximity to Leyton Midland Overground Station, along with a diverse array of local amenities including shops and restaurants.

We strongly advise early viewing to seize this exceptional opportunity.

