

GROUND FLOOR
377 sq.ft. (35.1 sq.m.) approx.



1ST FLOOR
346 sq.ft. (32.2 sq.m.) approx.



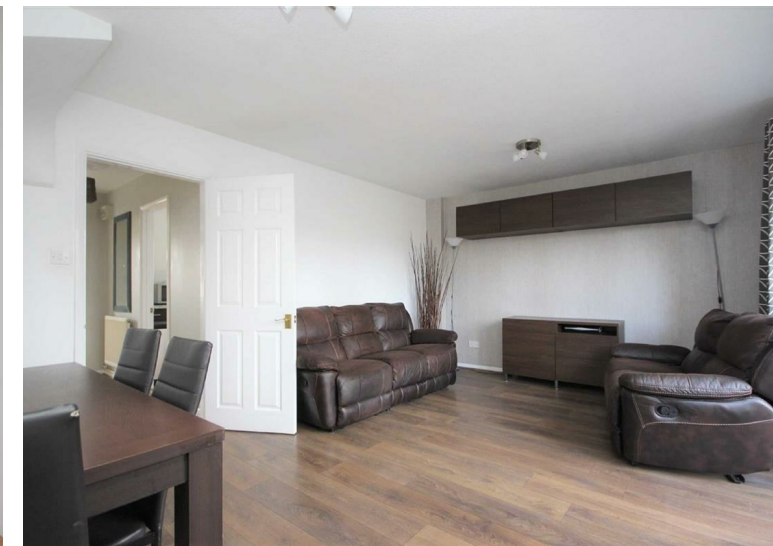
TOTAL FLOOR AREA: 724 sq.ft. (67.3 sq.m.) approx.
While every attempt has been made to ensure the accuracy of the floorplan contained here, measurements of doors, windows, rooms and any other items are approximate and no responsibility is taken for any error, omission or mis-statement. This plan is for illustrative purposes only and should be used as such by any prospective purchaser. The services, systems and appliances shown have not been tested and no guarantee, as to their operability or efficiency can be given. Made with Merge (2020)

Council: Newham | Council Tax Band: C | Floor Area: 753.00 sq ft



MacArthur Close, Forest Gate, E7 9NT
£1,900 Per Calendar Month

Bedrooms: 3 | Reception Rooms: 1 | Bathrooms: 1



Request a Viewing: **0208 503 6060** Email: walthamstow@churchill-estates.co.uk



Energy Efficiency Rating		Current	Potential
Very energy efficient - lower running costs			
(92 plus) A			87
(81-91) B			
(69-80) C		72	
(55-68) D			
(39-54) E			
(21-38) F			
(1-20) G			
Not energy efficient - higher running costs			
England & Wales	EU Directive 2002/91/EC		



The Agent has not tested any apparatus, equipment, fixtures and fittings or services and so cannot verify that they are in working order or fit for the purpose. A buyer is advised to obtain verification from their solicitor or surveyor. References to the tenure of a property are based on information supplied by the seller. The agent has not had the sight of the title documents. A buyer is advised to obtain verification from their solicitors.



Situated in the charming MacArthur Close, Forest Gate, this delightful terraced house is a true gem waiting to be discovered. Boasting one reception room, three cosy bedrooms, and a well-appointed bathroom, this property offers the perfect blend of comfort and style.

As you step inside, you'll be greeted by a modern interior that is both inviting and practical. The flexible landlord offers the option of furnished or part-furnished, allowing you to tailor the space to your liking.

One of the standout features of this lovely home is the private garden, providing a tranquil retreat where you can unwind after a long day. Imagine enjoying a cup of tea or hosting a barbecue in this serene outdoor space.

Conveniently, parking for one vehicle is available, ensuring you never have to worry about finding a spot after a busy day out and about.

Available from early June, this property is a rare find that combines modern living with a touch of elegance. Don't miss the opportunity to make this modern three-bedroom house your new home sweet home. Contact Churchill Estates today to arrange a viewing and start envisioning your life in this charming abode.

