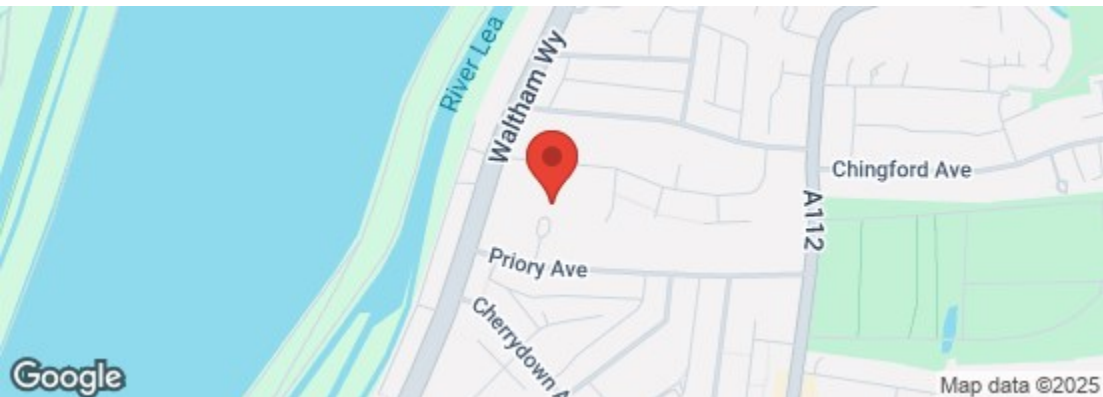


CHURCHILL
estates

Priory Close, Chingford, E4 8AE
£800,000 Freehold

Bedrooms: 5 | Reception Rooms: 2 | Bathrooms: 2

Energy Efficiency Rating		
	Current	Potential
Very energy efficient - lower running costs		
(92 plus) A		
(81-91) B		
(69-80) C		
(55-68) D		
(39-54) E		
(21-38) F		
(1-20) G		
Not energy efficient - higher running costs		
England & Wales	EU Directive 2002/91/EC	

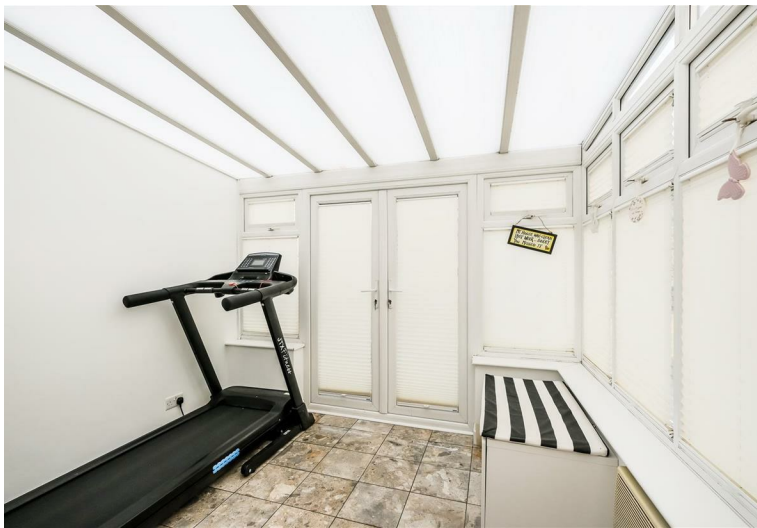


The Agent has not tested any apparatus ,equipment, fixtures and fittings or services and so cannot verify that they are in working order or fit for the purpose. A buyer is advised to obtain verification from their solicitor or surveyor.
References to the tenure of a property are based on information supplied by the seller. The agent has not had the sight of the title documents. A buyer is advised to obtain verification from their solicitors.

CHURCHILL
estates



Request a Viewing: **020 8524 0000** Email: **southchingford@churchill-estates.co.uk**



Nestled in the tranquil cul de sac of Priory Close, Chingford, this impressive semi-detached house offers a perfect blend of space, comfort, and stunning views. Spanning an expansive 1,774 square feet, the property boasts five generously sized bedrooms, making it an ideal family home.

Upon entering, you are greeted by two inviting reception rooms, perfect for both relaxation and entertaining guests. The layout is thoughtfully designed to provide ample living space, ensuring that every family member can enjoy their own area. The two well-appointed bathrooms add convenience, catering to the needs of a busy household.

One of the standout features of this property is its large garden, which provides a wonderful outdoor space for children to play, gardening enthusiasts to thrive, or simply for enjoying the fresh air and picturesque surroundings. The stunning views from the property further enhance its appeal, offering a serene backdrop to daily life.

For those with vehicles, the property includes parking for up to four cars, a rare find in residential areas, ensuring that you and your guests will never be short of space.

This home is not just a place to live; it is a sanctuary that combines the best of suburban living with the convenience of local amenities. With its spacious interiors, beautiful garden, and prime location, this property is a must-see for anyone seeking a delightful family home in Chingford.

