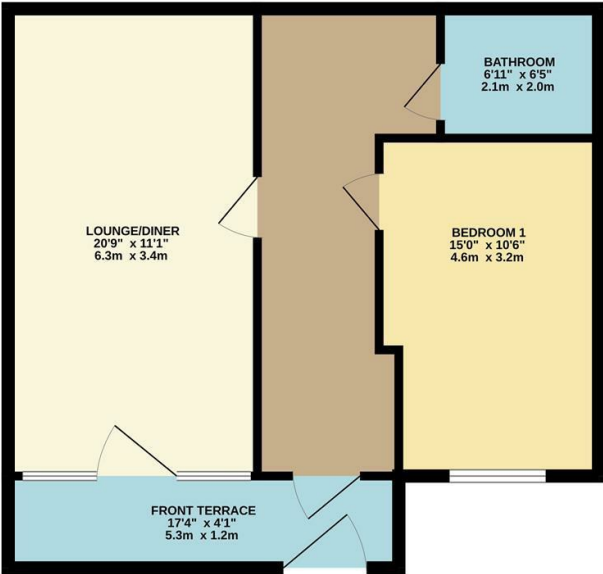


GROUND FLOOR  
614 sq.ft. (57.0 sq.m.) approx.



**CHURCHILL**  
estates

Chingford Mount Road, Chingford, E4 8LT  
Asking Price £290,000 Leasehold

Bedrooms: 1 | Reception Rooms: 1 | Bathrooms: 1



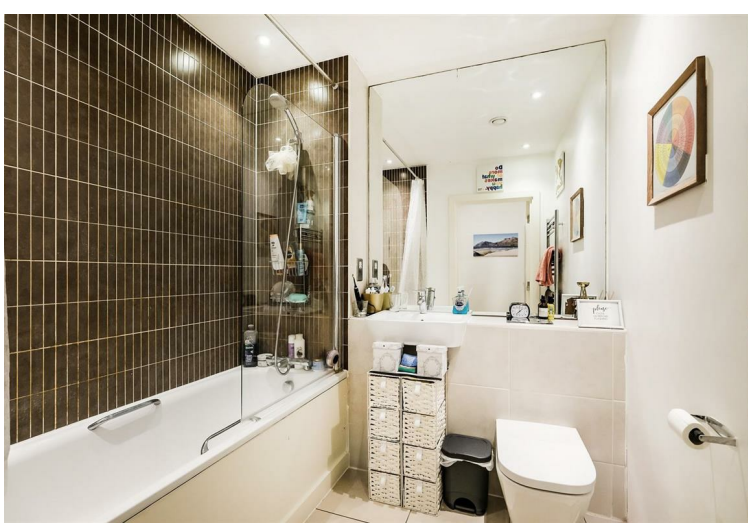
The Agent has not tested any apparatus ,equipment, fixtures and fittings or services and so cannot verify that they are in working order or fit for the purpose. A buyer is advised to obtain verification from their solicitor or surveyor.  
References to the tenure of a property are based on information supplied by the seller. The agent has not had the sight of the title documents. A buyer is advised to obtain verification from their solicitors.

**CHURCHILL**  
estates



Request a Viewing: **020 8524 0000** Email: **southchingford@churchill-estates.co.uk**





Nestled in the charming area of Chingford, London, this delightful one-bedroom flat offers a perfect blend of modern living and convenience. Built in 2014, the property is in excellent condition, making it an ideal choice for first-time buyers or those seeking a comfortable rental.

Spanning 543 square feet, this purpose-built flat features a well-appointed reception room that provides a welcoming space for relaxation and entertainment. The modern fitted kitchen is designed with both style and functionality in mind, equipped with contemporary appliances that cater to all your culinary needs. The flat boasts a sleek, modern bathroom, ensuring a comfortable and stylish experience. One of the standout features of this property is the excellent storage options available, making it easy to keep your living space tidy and organised.

Situated on the ground floor, this property offers easy access and convenience. Its prime location means you are just a stone's throw away from a variety of local amenities, including shops, cafes, and parks, making it a vibrant place to live. Additionally, excellent transport links are nearby, providing effortless access to the wider London area.

This one-bedroom flat in Chingford is a rare find, combining modern comforts with a fantastic location. Whether you are looking to buy or rent, this property is sure to impress with its thoughtful design and accessibility. Don't miss the opportunity to make this lovely flat your new home.