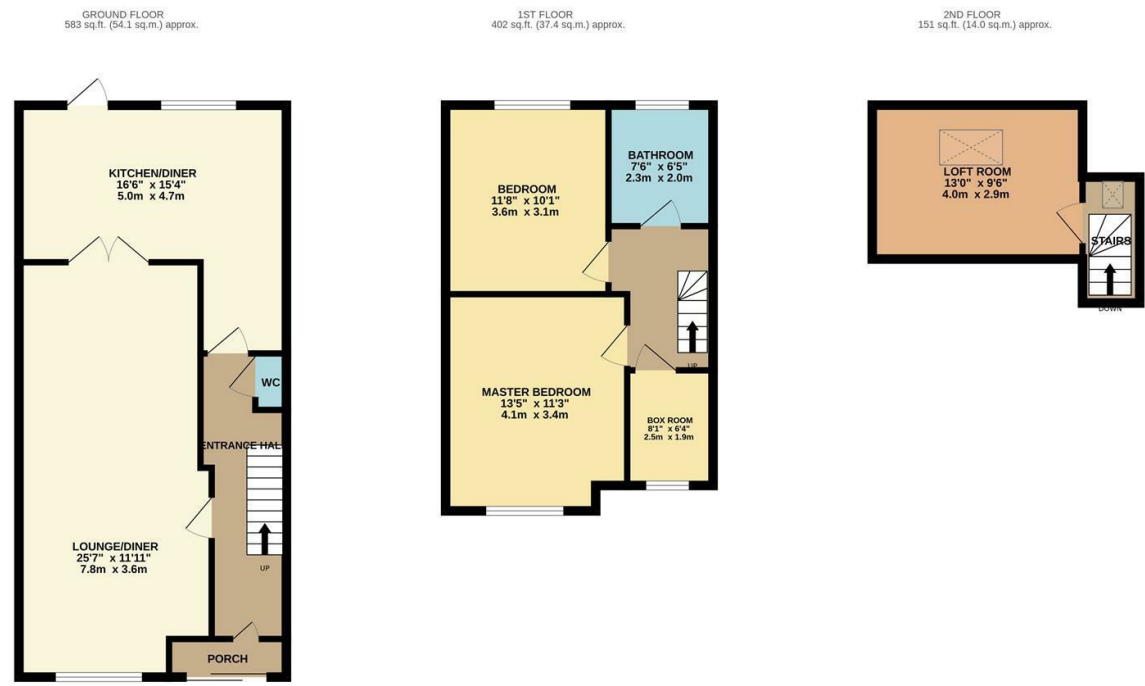




| Three Bedrooms | Loft Room | Ground Floor Extended | Garage to Rear | Chain Free | Through Lounge | Kitchen Diner | Off Street Parking | Close to Mount | Tree Lined Turning |



TOTAL FLOOR AREA: 1136 sq.ft. (105.5 sq.m.) approx.
Whilst every attempt has been made to ensure the accuracy of the floorplan contained here, measurements of doors, windows, rooms and any other items are approximate and no responsibility is taken for any error, omission or mis-statement. This plan is for illustrative purposes only and should be used as such by any prospective purchaser. The services, systems and appliances shown have not been tested and no guarantee as to their operability or efficiency can be given.
 Made with Metropix ©2024

Middleton Avenue, Chingford, E4 8EE
£550,000 Freehold

Energy Efficiency Rating	
Current	Potential
Very energy efficient - lower running costs	
(92 plus) A	77
(81-91) B	
(69-80) C	
(55-68) D	
(39-54) E	
(21-38) F	
(1-20) G	
Not energy efficient - higher running costs	
England & Wales EU Directive 2002/91/EC	



The Agent has not tested any apparatus, equipment, fixtures and fittings or services and so cannot verify that they are in working order or fit for the purpose. A buyer is advised to obtain verification from their solicitor or surveyor.
 References to the tenure of a property are based on information supplied by the seller. The agent has not had the sight of the title documents. A buyer is advised to obtain verification from their solicitors.



To view call **020 8524 0000**
 Email southchingford@churchill-estates.co.uk

To view call **020 8524 0000**
 Email southchingford@churchill-estates.co.uk



Welcome to Middleton Avenue, Chingford - a charming location that could be the perfect setting for your new home! This Three/Four bedroom mid-terrace house boasts a spacious 1,194 sq ft of living space, offering plenty of room for you to create your ideal living environment.

As you step inside, you'll be greeted by a cosy reception room, perfect for relaxing with family or entertaining guests. With three bedrooms on offer on the first floor and a further loft room that is used as a bedroom there's ample space for a growing family or for those who enjoy having a home office or guest room.

The property features a well-maintained bathroom, ensuring your daily routines are both convenient and comfortable. Additionally, the parking provision for up to three vehicles is a rare find in this area, making it ideal for those with multiple cars or visitors.

Middleton Avenue is a sought-after location in Chingford, known for its friendly community atmosphere and convenient amenities. Whether you're looking to enjoy a peaceful evening in the comfort of your new home or explore the nearby parks and local shops, this property offers the best of both worlds.

Don't miss out on the opportunity to make this house your own - schedule a viewing today and envision the possibilities that await you at Middleton Avenue!

