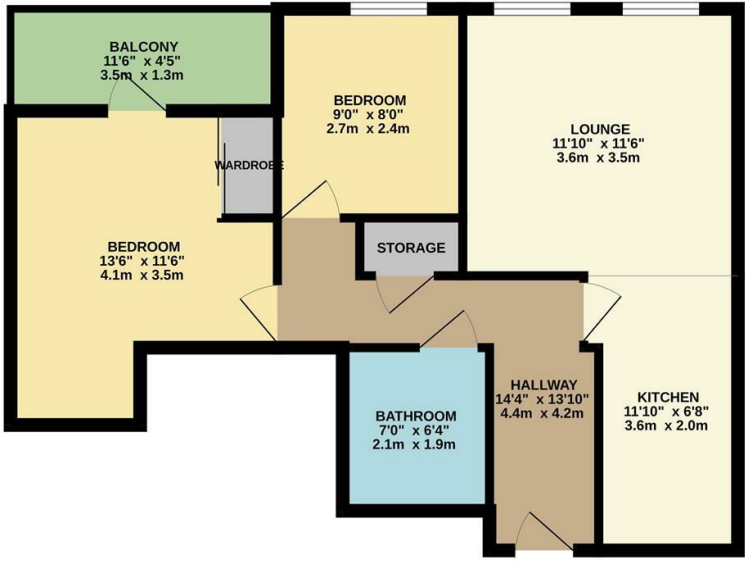




GROUND FLOOR
562 sq.ft. (52.2 sq.m.) approx.



TOTAL FLOOR AREA: 562 sq.ft. (52.2 sq.m.) approx.
Whilst every attempt has been made to ensure the accuracy of the floorplan contained here, measurements of doors, windows, rooms and any other items are approximate and no responsibility is taken for any error, omission or mis-statement. This plan is for illustrative purposes only and should be used as such by any prospective purchaser. The services, systems and appliances shown have not been tested and no guarantee as to their operability or efficiency can be given.
Made with Measure 32024



The Agent has not tested any apparatus, equipment, fixtures and fittings or services and so cannot verify that they are in working order or fit for the purpose. A buyer is advised to obtain verification from their solicitor or surveyor.
References to the tenure of a property are based on information supplied by the seller. The agent has not had the sight of the title documents. A buyer is advised to obtain verification from their solicitors.



CHURCHILL
estates

Titley Close, Chingford, E4 8PL
Offers Over £300,000 Leasehold

Bedrooms: 2 | Reception Rooms: 1 | Bathrooms: 1



CHURCHILL
estates

Request a Viewing: **020 8524 0000** Email: **southchingford@churchill-estates.co.uk**



Welcome to this charming first-floor apartment located in the heart of Chingford on Titley Close. This delightful property boasts a cosy reception room, two lovely bedrooms, and a modern bathroom, offering a comfortable and inviting living space.

Step inside this 562 sq ft apartment and be greeted by a well-proportioned layout that is perfect for both relaxing and entertaining. The balcony provides a lovely spot to enjoy a morning coffee or unwind after a long day, while the video entryphone system ensures security and peace of mind and having a lift makes it easy when coming home with your shop.

Convenience is key with allocated parking for one vehicle, making coming home a breeze. The central location of this apartment means you are just a stone's throw away from all the amenities Chingford has to offer, from shops to restaurants to parks.

Don't miss the opportunity to make this apartment your own and enjoy the best of what Chingford has to offer. Book a viewing today and envision yourself living in this wonderful space on Titley Close.

