

**CHURCHILL**  
estates

Bedrooms: 3 | Reception Rooms: 2 | Bathrooms: 1

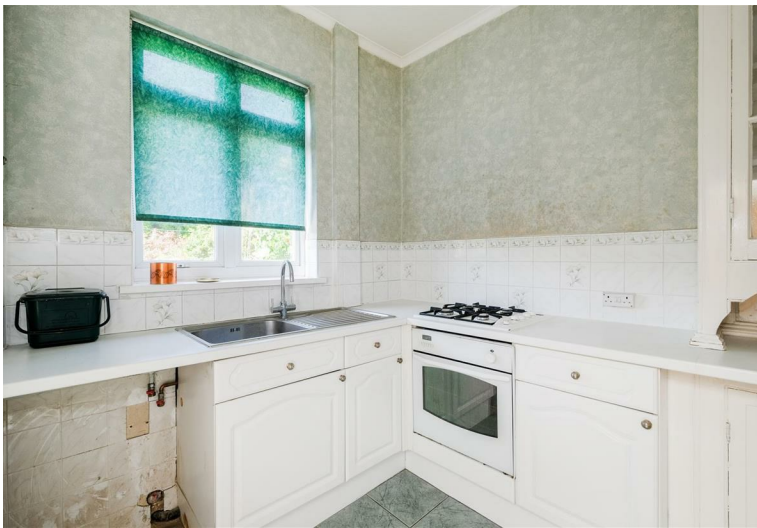
A map of the Chingford area in London. The map shows several roads: A110, A1069, Scholars Rd, Long Deacon Rd, Kimberley Rd, Victoria Rd, and Forest Side. A red pin is located on Long Deacon Rd, near the intersection with Kimberley Rd. The area is labeled 'CHINGFORD' in large black letters. The map data is from 2023.

A bright, empty room with light green walls, white trim, and a patterned green carpet. A large window with dark green curtains is on the left, and a small table and chair are in the corner.

Request a Viewing: **020 8529 5500** Email: **[northchingford@churchill-estates.co.uk](mailto:northchingford@churchill-estates.co.uk)**

**CHURCHILL**  
estates





LOCATION WITH POTENTIAL!!! Superb character three bedroom semi-detached house which is situated in the heart of North Chingford and only a short walk to the main line station and the beautiful open spaces of Epping forest. the property which is being offered with no onward chain is in need of modernisation throughout but offers superb future potential and benefits from attached garage via own driveway, beautiful approx 70ft rear garden with side access, two large reception rooms, first floor shower room with separate wc, additional ground floor wc, covered lean to and an early internal inspection is a must to fully appreciate the space and potential this family home has to offer.

EPC Rating TBC

Council Tax Band E

