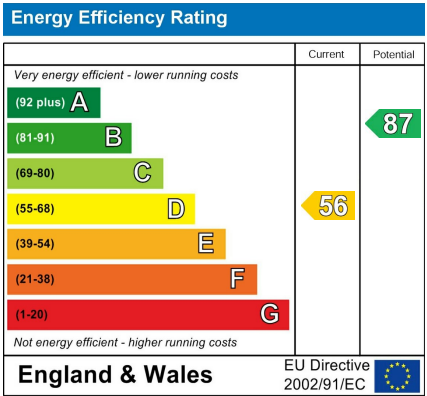


CHURCHILL
estates

Council: Waltham Forest | Council Tax Band: D | Floor Area: 856.00 sq ft

Hawkdene, North Chingford, E4 7PF
Offers Over £550,000 Freehold

Bedrooms: 3 | Reception Rooms: 1 | Bathrooms: 1

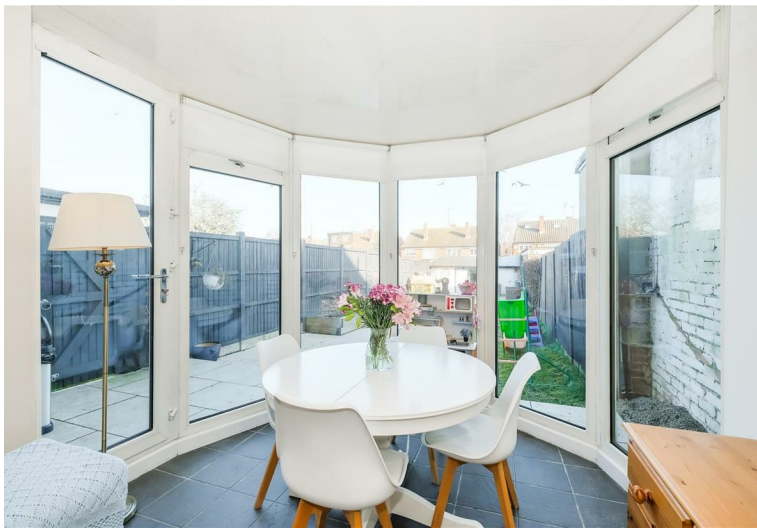


The Agent has not tested any apparatus ,equipment, fixtures and fittings or services and so cannot verify that they are in working order or fit for the purpose. A buyer is advised to obtain verification from their solicitor or surveyor.
References to the tenure of a property are based on information supplied by the seller. The agent has not had the sight of the title documents. A buyer is advised to obtain verification from their solicitors.

CHURCHILL
estates



Request a Viewing: **020 8529 5500** Email: **northchingford@churchill-estates.co.uk**



LOOK!! LOOK!! LOOK!! Beautiful three bedroom end terraced house which is situated in the sought after Yardley school location and adjacent to the beautiful Epping forest. The property which has been well maintained and modernised benefits from off street parking to front, large double garage to rear, lovely approx 60ft rear garden, conservatory, large open plan lounge/diner, beautiful fitted kitchen, first floor bathroom and we feel would make an ideal family home.

EPC Rating D

Council Tax Band D

