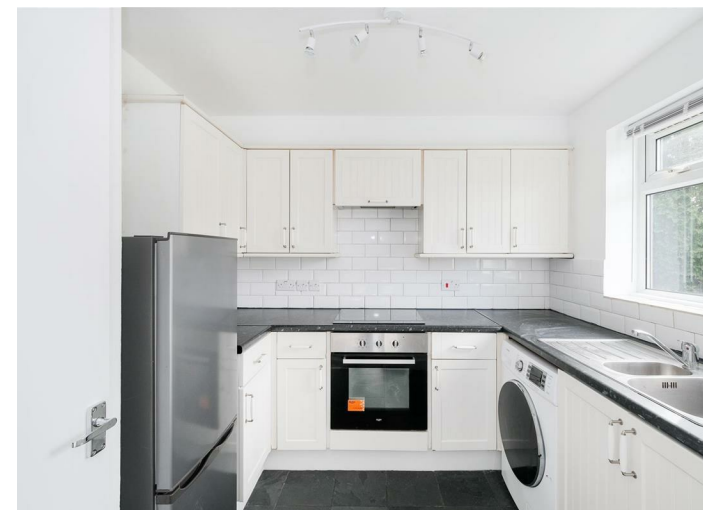




Trotwood, Chigwell, IG7 5JP
£1,600 Per Month



To view call **0208 504 2222**
Email buckhursthill@churchill-estates.co.uk



This ideal rental property has just been redecorated throughout, is situated in Chigwell and features a large lounge, two double bedrooms, separate kitchen and main bathroom. Electric heating. The property is situated 0.4 miles (Approx. 6 minute walk) to Hainault central line station, with direct access to Stratford (Westfield shopping and the Olympic Park) and onto The City and West End of London, good vehicular access to the M11 and M25. There is also the added benefit of having great primary and secondary schools close by. The property is offered unfurnished. Parking available.

5 weeks' deposit: £ 1846

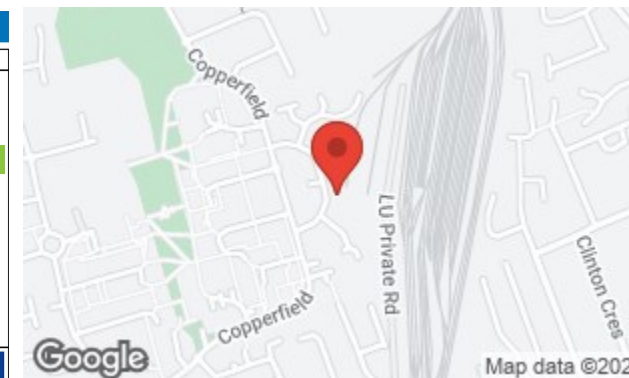
Council Tax band: B

EPC rating: D

Minimum 12 months' let



Energy Efficiency Rating		Current	Potential
Very energy efficient - lower running costs			
(92 plus) A			
(81-91) B			
(69-80) C			
(55-68) D		65	74
(39-54) E			
(21-38) F			
(1-20) G			
Not energy efficient - higher running costs			
England & Wales		EU Directive 2002/91/EC	



5 weeks' deposit: £ 1846

Council Tax band: B

EPC rating: D

Minimum 12 months' let

The Agent has not tested any apparatus, equipment, fixtures and fittings or services and so cannot verify that they are in working order or fit for the purpose. A buyer is advised to obtain verification from their solicitor or surveyor. References to the tenure of a property are based on information supplied by the seller. The agent has not had the sight of the title documents. A buyer is advised to obtain verification from their solicitors.



To view call **0208 504 2222**
Email buckhursthill@churchill-estates.co.uk