

Hiraddug Road, Dyserth, Denbighshire LL18 6HS

£179,950

🛏 2 🚿 1 🛋 2

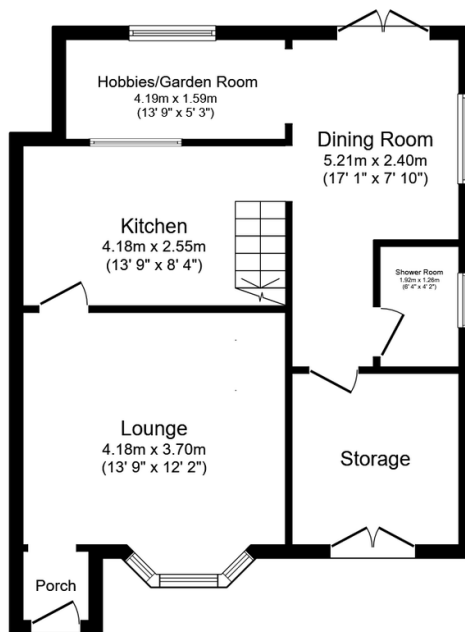


NO FORWARD CHAIN - This charming cottage is situated in a popular village location enjoying superb views towards countryside from the front elevation. Having a lounge, dining room, hobbies room, kitchen, shower room and two bedrooms. Having parking for a small vehicle to the front with an attached store and easy to maintain gardens to the rear.

DIRECTIONS Proceed onto Waterfall Road, Dyserth and at the traffic lights turn left onto the High Street, take the third right onto Hiraddug Road and the property will be seen on the right hand side.

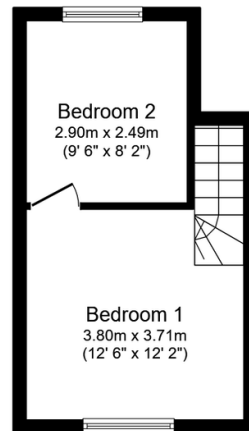
Key Features

- NO FORWARD CHAIN
- DELIGHTFUL COTTAGE
- POPULAR VILLAGE LOCATION
- VIEWS TOWARDS COUNTRYSIDE
- CHARM & CHARACTER THROUGHOUT
- ATTACHED STORE
- EASY TO MAINTAIN GARDENS
- PARKING FOR SMALL VEHICLE
- FREEHOLD
- COUNCIL TAX - C - EPC -E



Ground Floor

Floor area 56.6 m² (609 sq.ft.)



First Floor

Floor area 20.5 m² (221 sq.ft.)

TOTAL: 77.1 m² (830 sq.ft.)

This floor plan is for illustrative purposes only. It is not drawn to scale. Any measurements, floor areas (including any total floor area), openings and orientations are approximate. No details are guaranteed, they cannot be relied upon for any purpose and do not form any part of any agreement. No liability is taken for any error, omission or misstatement. A party must rely upon its own inspection(s). Powered by www.Propertybox.io