

1 Rhodfa Sian, Dyserth, Denbighshire LL18 6BJ

£317,500

🛏 3 🚿 2 🚗 2

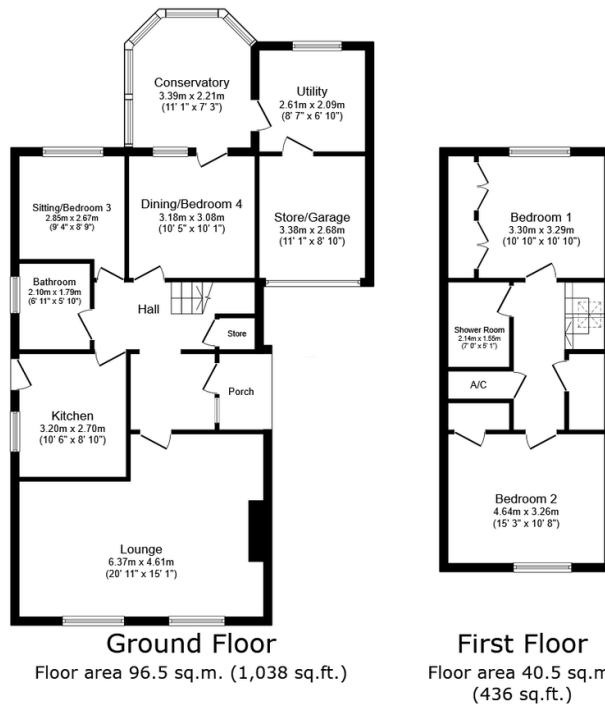


This detached property offers versatile spacious accommodation with the potential of four bedrooms, good size lounge, ground floor bathroom, first floor shower room and a rear conservatory with well maintained gardens and useful Garage/Store with Utility.

DIRECTIONS From the Prestatyn office turn left onto Meliden Road, continue through the village of Meliden and turn left signposted Dyserth. Proceed up Waterfall Road, at the traffic light continue ahead onto St Asaph Road and first left onto Cwm Road, first left onto Bron Deg and take the second left onto Rhodfa Sian where the property will be seen on the left hand side.

Key Features

- SUPRISINGLY SPACIOUS
- GOOD SIZE LOUNGE
- GROUND FLOOR BATHROOM
- FIRST FLOOR SHOWER ROOM
- VERSATILE ACCOMMODATION
- POTENTIAL FOUR BEDROOMS
- REAR CONSERVATORY
- GARAGE/UTILITY & DRIVEWAY
- FREEHOLD
- EPC - tbc COUNCIL TAX - E



Total floor area: 137.0 sq.m. (1,474 sq.ft.)

This floor plan is for illustrative purposes only. It is not drawn to scale. Any measurements, floor areas (including any total floor area), openings and orientations are approximate. No details are guaranteed, they cannot be relied upon for any purpose and do not form any part of any agreement. No liability is taken for any error, omission or misstatement. A party must rely upon its own inspection(s). Powered by www.Propertybox.io