

Tyn Y Morfa Cottages, Tyn Y Morfa, Gwespyr Flintshire, CH8 9JW

£210,000

🛏️ 3 🚗 1 🚗 2

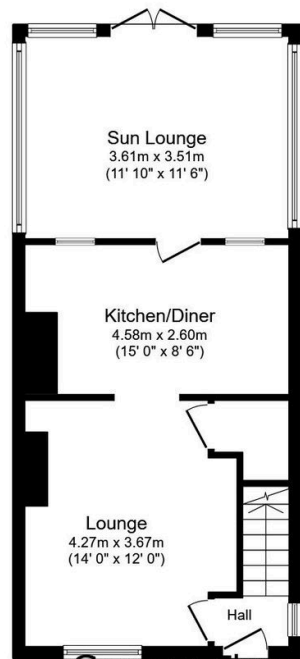


This three bedroom semi detached cottage is surrounded by countryside yet is within walking distance of the coast enjoying easy to maintain gardens with driveway providing off road parking. The property has the benefit of air source heating and solar panels making it efficient to run with a lounge, kitchen/diner and rear sun lounge.

DIRECTIONS Proceed along the main coast road through the village of Gronant, turn left opposite 'The Bells of St Mary's' and proceed along Bridlewood stables taking the first left, continue over the railway line and the property will be seen on the left hand side by way of a 'For Sale' sign.

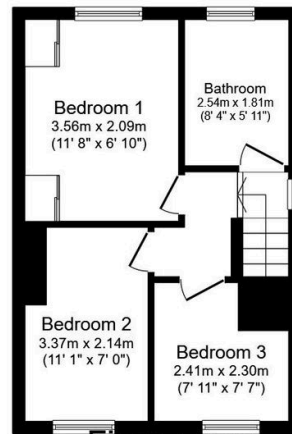
Key Features

- SEMI DETACHED COTTAGE
- WALKING DISTANCE OF THE COAST
- THREE BEDROOMS
- LOUNGE & REAR SUN ROOM
- KITCHEN/DINER
- AIR SOURCE HEATING
- SOLAR PANELS
- DRIVEWAY & PATIO GARDEN
- FREEHOLD
- COUNCIL TAX - D EPC - tbc



Ground Floor

Floor area 48.5 m² (522 sq.ft.)



First Floor

Floor area 31.9 m² (344 sq.ft.)

TOTAL: 80.4 m² (865 sq.ft.)

This floor plan is for illustrative purposes only. It is not drawn to scale. Any measurements, floor areas (including any total floor area), openings and orientations are approximate. No details are guaranteed, they cannot be relied upon for any purpose and do not form any part of any agreement. No liability is taken for any error, omission or misstatement. A party must rely upon its own inspection(s). Powered by www.Propertybox.io