

Calthorpe Drive, Prestatyn, Denbighshire LL19 9RF

£380,000

3 1 2

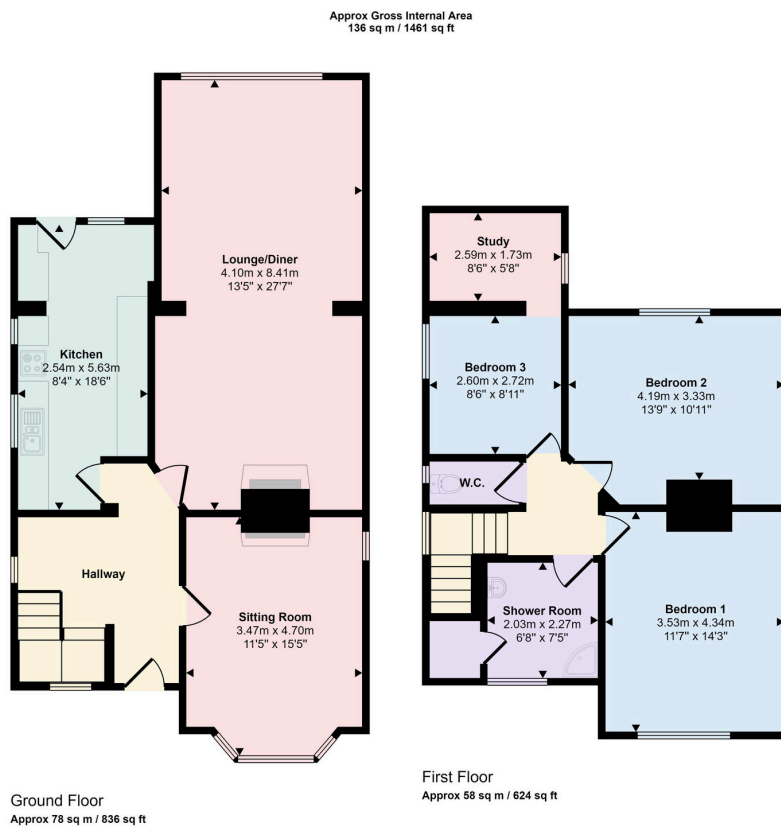


This detached family home is situated in a popular location within upper Prestatyn, the property offers extended living accommodation with a sitting room, spacious lounge/diner, kitchen, three bedrooms, shower room and separate w.c.. Having off road parking with a single garage, the gardens enjoy established hedging affording privacy.

DIRECTIONS From the Prestatyn office turn left and proceed straight across at the mini roundabout, bear left onto The Avenue, Woodland Park, take the first right onto Calthorpe Drive and follow the road round and the property will be seen on the left hand side.

Key Features

- DETACHED FAMILY HOME
- SITTING ROOM
- DRIVEWAY
- ENCLOSED REAR GARDEN
- EPC - E
- THREE BEDROOMS
- EXTENDED LOUNGE/DINER
- SINGLE GARAGE
- FREEHOLD
- COUNCIL TAX BAND - E



This floorplan is only for illustrative purposes and is not to scale. Measurements of rooms, doors, windows, and any items are approximate and no responsibility is taken for any error, omission or mis-statement. Icons of items such as bathroom suites are representations only and may not look like the real items. Made with Made Snappy 360.

CONSUMER PROTECTION REGULATIONS 2008 AND THE BUSINESS PROTECTION FROM MISLEADING MARKETING REGULATIONS 2008

These particulars, whilst believed to be accurate, are set out for guidance only and do not constitute any part of an offer or contract. Prospective purchasers or tenants should not rely on these particulars as statement or representation of fact, but must satisfy themselves by inspection or otherwise as to their accuracy. No person in the employment of PETER LARGE Estate Agents has the authority to make or give any representation or warranty in relation to the property. Room sizes are approximate and all comments are of the opinion of PETER LARGE Estate agents having carried out a walk through inspection. These sales particulars are prepared under the consumer regulations 2008 and are governed by the business from misleading marketing regulations 2008.