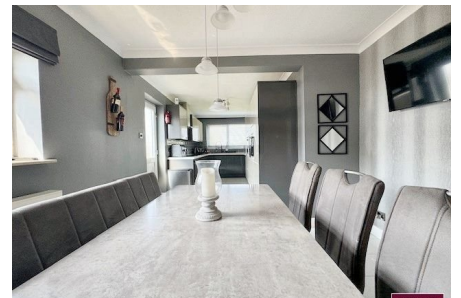


20 Glasfryn Avenue, Meliden, Denbighshire, LL19 8PL

£425,000

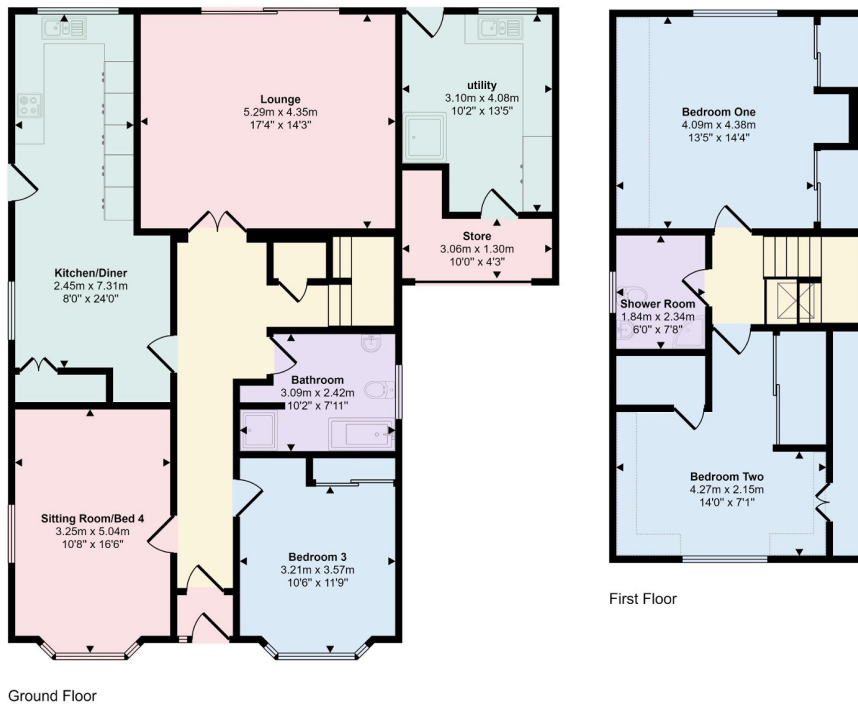
4 2 1



This stunning detached dormer bungalow is situated in a most sought after location within the popular village of Meliden and enjoys an outlook from the rear over St Melyd Golf Course. No expense has been spared on the quality of finish throughout this property with a spacious lounge, modern kitchen/diner, ground floor bathroom, two ground floor bedrooms (or sitting room). To the first floor there are two double bedrooms with fitted wardrobes and a shower room. A resin driveway provides ample off road parking with an outside STORE/UTILITY (which was once the Garage). A lawned rear garden with hot tub and choice of seating areas where the superb views can be enjoyed.

## Key Features

- SUPERB VIEWS
- VILLAGE LOCATION
- DETACHED DORMER BUNGALOW
- FOUR BEDROOMS
- SPACIOUS LOUNGE
- KITCHEN/DINER
- BATHROOM & SHOWER ROOM
- WELL PRESENTED THROUGHOUT
- FREEHOLD
- EPC - D COUNCIL TAX BAND - D



Denotes head height below 1.5m

This floorplan is only for illustrative purposes and is not to scale. Measurements of rooms, doors, windows, and any items are approximate and no responsibility is taken for any error, omission or mis-statement. Icons of items such as bathroom suites are representations only and may not look like the real items. Made with Made Snappy 360.