

Gwynfryn, Holywell Road, Rhualt LL17 0TD

£295,000

4 2 3

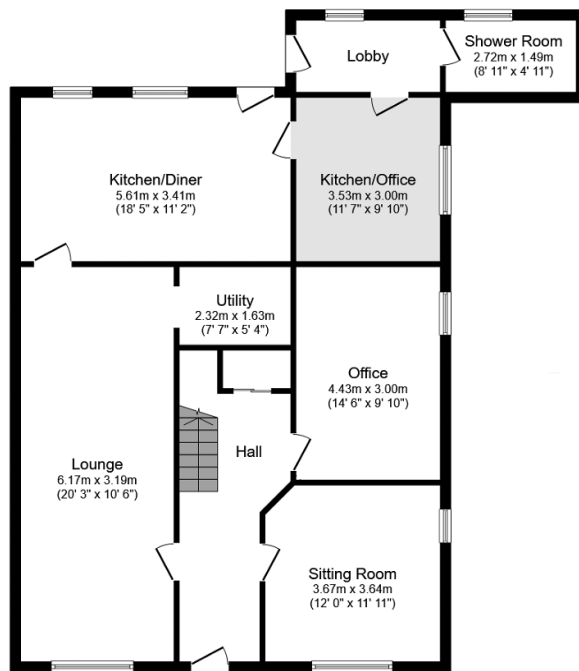


A detached family home in a prominent position which offers spacious accommodation. It is in need of modernisation and stands in good size gardens to the side. Benefitting way of oil fired central heating four bedrooms, three reception rooms to include a home office. The A55 expressway is within a short distance which makes for ease of commuting to Chester and other North Wales coastal towns.

Directions -From the Prestatyn office onto Waterfall Road, at Dyserth and continue to the next set of traffic lights and proceed straight across and bear left onto Cwm road., continue along the country lane to the T-Junction and turn right and the property can be seen on the left

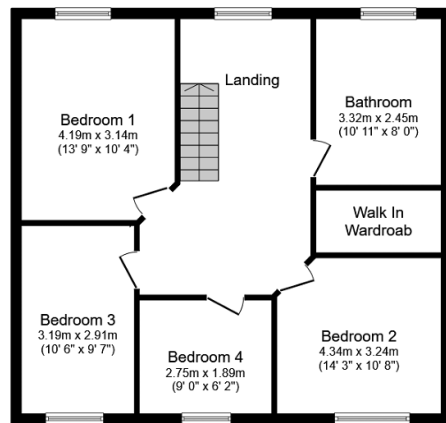
## Key Features

- DETACHED FAMILY HOME
- EASY ACCESS TO A55
- PERIOD PROPERTY
- OPPORTUNITY TO WORK FROM HOME
- EPC tbc
- FOUR BEDROOMS
- VILLAGE LOCATION
- VERSATILE ACCOMMODATION
- FREEHOLD
- COUNCIL TAX BAND



Ground Floor

Floor area 111.0 sq.m. (1,195 sq.ft.)



First Floor

Floor area 71.4 sq.m. (769 sq.ft.)

TOTAL: 182.4 sq.m. (1,964 sq.ft.)

This floor plan is for illustrative purposes only. It is not drawn to scale. Any measurements, floor areas (including any total floor area), openings and orientations are approximate. No details are guaranteed, they cannot be relied upon for any purpose and do not form any part of any agreement. No liability is taken for any error, omission or misstatement. A party must rely upon its own inspection(s). Powered by [www.Propertybox.io](http://www.Propertybox.io)