

Hafan Deg, Waterfall Road, Dyserth LL18 6ET

£189,950

3 1 2

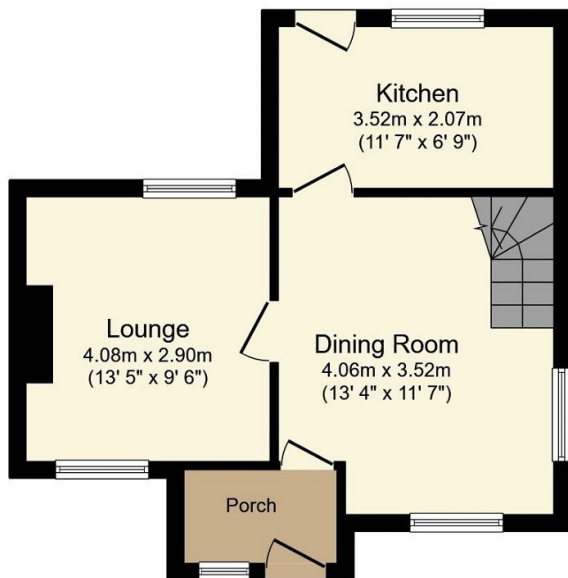


A charming end terraced cottage which enjoys views from the rear gardens over the village of Dyserth. It offers three bedrooms and two reception rooms with a log burning stove, fitted kitchen and a bathroom. The village of Dyseth boasts a variety of cafes, shops and a primary school.

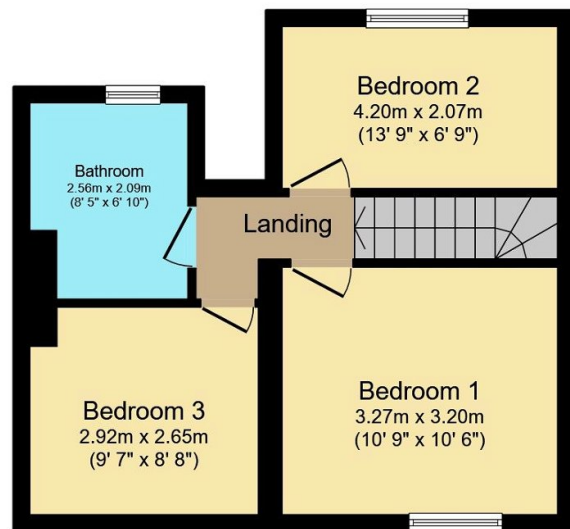
Directions - Proceed away from the Prestatyn office through the village of Meliden, turn left at the traffic lights onto Waterfall road and the property can be found on the right hand side, past the shop and halfway up the hill.

## Key Features

- VILLAGE LOCATION
- END TERRACED COTTAGE
- THREE BEDROOMS
- TWO RECEPTION ROOMS
- LOG BURNER
- ATTRACTIVE GARDENS TO THE REAR
- VIEWS OVER THE VILLAGE
- FREEHOLD
- COUNCIL TAX BAND - D
- EPC - tbc



**Ground Floor**



**First Floor**

Total floor area 72.3 m<sup>2</sup> (778 sq.ft.) approx

This plan is for illustration purposes only and may not be representative of the property. Plan not to scale. Powered by PropertyBox