

Cwm Road, Rhualt LL17 0TP

Offers In Region Of £475,000

🛏 4 🍷 2 🛋 2

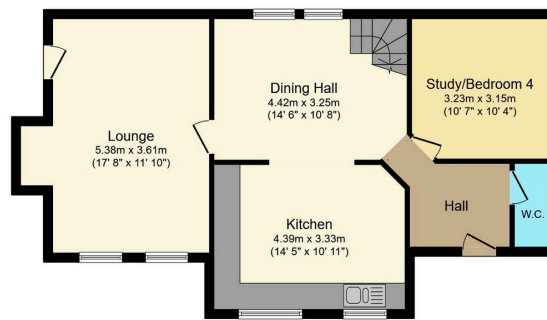


This attractive brick built former stable stands in a much desirable position next to the Brynlithrig Hall Estate and boasts good size family accommodation with stunning view over the Vale Of Clwyd along with ample parking & good size front gardens.

Directions - Proceed up the hill past the Waterfalls in Dyserth and at the crossroads continue across, bearing first left onto Cwm Road, proceed down to the village for about two miles and at the end is Rhualt. Just before the the junction the property can be seen on the right hand side.

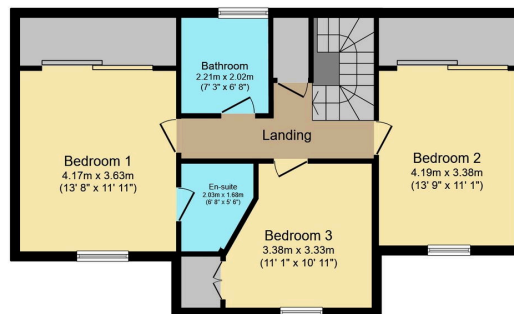
Key Features

- RURAL LOCATION
- STUNNING VIEWS
- HAMLET OF RHUALLT
- TWO RECEPTION ROOMS
- THREE BEDROOMS
- EN-SUITE SHOWER ROOM
- GARDENS
- FREEHOLD
- COINCIL TAX BAND - F
- EPC - D



Ground Floor

Floor area 67.6 sq.m. (728 sq.ft.) approx



First Floor

Floor area 66.6 sq.m. (717 sq.ft.) approx

Total floor area 134.2 sq.m. (1,444 sq.ft.) approx

This plan is for illustration purposes only and may not be representative of the property. Plan not to scale.

Powered by audioagent.com