



**WARE & CO**  
estate and letting agents

**19 Fowler Street, Taunton – TA2 6JB**

**Fixed Price £215,000**



# 19 Fowler Street

Council Tax band: B

Charge payable for 2025/26 - £2,007.48

Tenure: Freehold

EPC Energy Efficiency Rating: D

- No onward chain
- A spacious Victorian terrace house situated in the Rowbarton area of Taunton
- Two reception rooms
- Kitchen
- Ground floor bathroom
- Three bedrooms
- Courtyard garden
- Close to Taunton Railway Station

## SERVICES

Main services of gas, electricity, water and drainage are connected. Broadband/Mobile phone coverage - The options of standard, superfast and ultrafast broadband with speeds upto 1,800Mbps are available. For an indication of broadband speeds as well as mobile phone signal and coverage available please refer to the 'Ofcom checker' website.





This charming three bedroom Victorian terrace house offers spacious and versatile accommodation, combining period character with modern convenience. Situated within easy reach of Taunton's town centre and transport links, the property is available with **no onward chain**, making it an attractive option for both first-time buyers and investors alike.

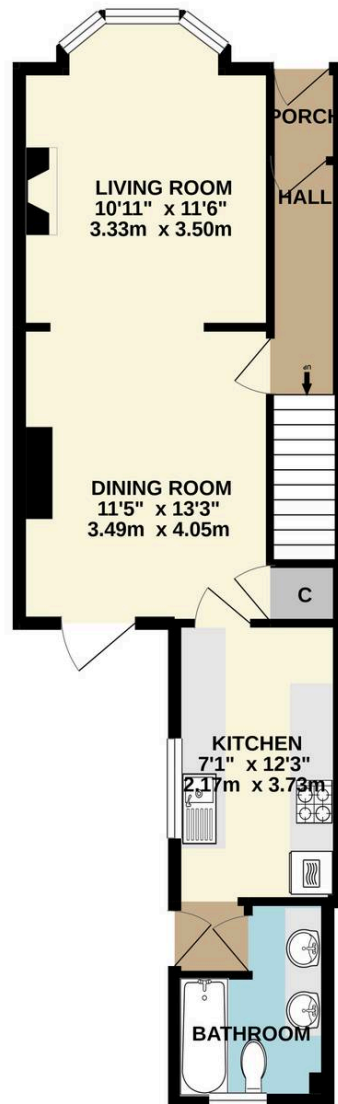
On the ground floor, the property features two well-proportioned reception rooms, providing flexible living and dining spaces. The refitted kitchen is fitted with a modern range of units and leads through to a ground floor bathroom and door to the rear garden. Upstairs, there are three good sized bedrooms, each with the proportions typical of the Victorian era.

#### Garden

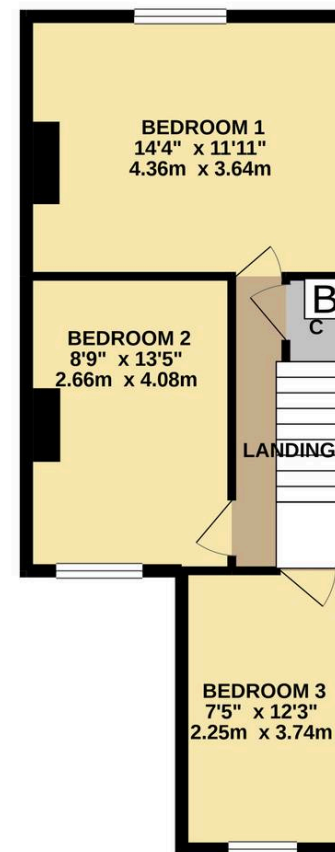
To the rear, the property enjoys a private and enclosed courtyard-style garden, ideal for low-maintenance outdoor living, summer dining, or creating a peaceful retreat.



GROUND FLOOR  
518 sq. ft. (48.2 sq. m.) approx.



1ST FLOOR  
444 sq. ft. (41.2 sq. m.) approx.



TOTAL FLOOR AREA: 962 sq. ft. (89.4 sq. m.) approx.

Whilst every attempt has been made to ensure the accuracy of the floorplan contained here, measurements of doors, windows, rooms and any other items are approximate and no responsibility is taken for any error, omission or mis-statement. This plan is for illustrative purposes only and should be used as such by any prospective purchaser. The services, systems and appliances shown have not been tested and no guarantee as to their operability or efficiency can be given.

Made with Metropix ©2019





**Ware & Co**

Ware & Co, 53 Bridge Street - TA1 1TP

01823259604 • [info@wareandco.com](mailto:info@wareandco.com) • [www.wareandco.com](http://www.wareandco.com)

