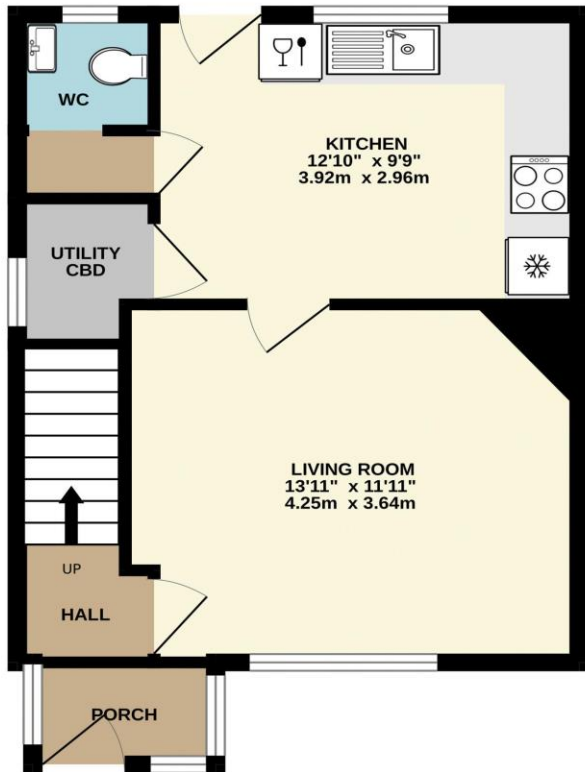
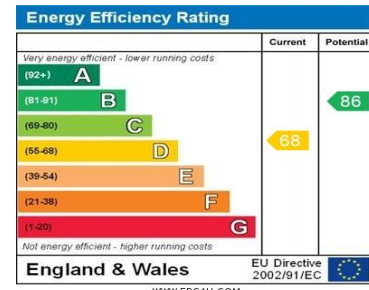
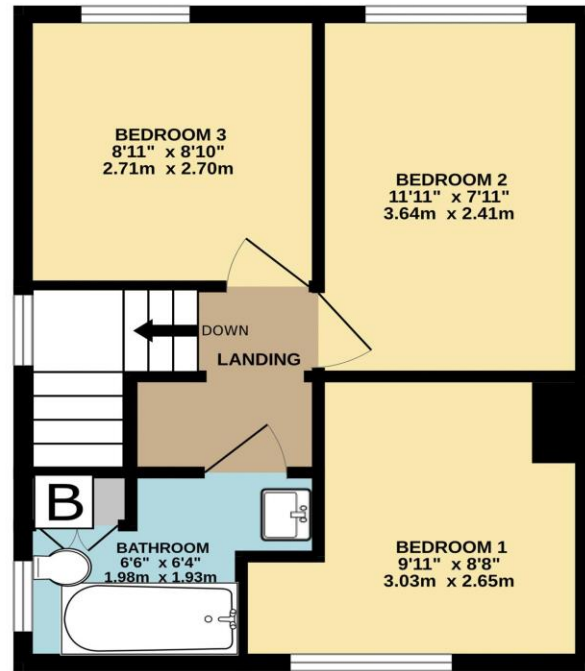


GROUND FLOOR
384 sq.ft. (35.7 sq.m.) approx.



1ST FLOOR
366 sq.ft. (34.0 sq.m.) approx.



TOTAL FLOOR AREA: 750 sq.ft. (69.7 sq.m.) approx.

Whilst every attempt has been made to ensure the accuracy of the floorplan contained here, measurements of doors, windows, rooms and any other items are approximate and no responsibility is taken for any error, omission or mis-statement. This plan is for illustrative purposes only and should be used as such by any prospective purchaser. The services, systems and appliances shown have not been tested and no guarantee as to their operability or efficiency can be given.
Made with Metropix ©2024



53 Bridge Street, Taunton, Somerset, TA1 1TP

T: 01823 259604 E: info@wareandco.com W: www.wareandco.com



£265,000

WARE & CO
estate and letting agents

3 Court Cottages, Norton Fitzwarren Taunton, Somerset, TA2 6QW

A tastefully refurbished semi detached character cottage

Refitted kitchen/dining room with integrated appliances

Spacious light living room

Utility room and cloakroom/wc

Three good sized bedrooms

Contemporary three piece bathroom

Long enclosed rear garden with summerhouse and sheds

Generous front garden with p/p for a driveway

Close to a range of local amenities

Viewing a must to appreciate this fabulous home



This charming three-bedroom semi-detached cottage, located in the popular village of Norton Fitzwarren, has been fully renovated to a high standard, offering a perfect blend of contemporary comfort and classic cottage charm.

The property sits on a generous plot, boasting large gardens to both the front and rear, providing ample outdoor space for relaxation and recreation. With full planning permission for the creation of a driveway at the front, this home offers both practicality and appeal, ideal for families or those seeking a peaceful rural lifestyle with easy access to local amenities and nearby Taunton.

The cottage briefly comprises an entrance hall with stairs rising to the first floor, lovely bright living room, refitted kitchen/dining room with integrated appliances, small utility room, cloakroom/wc, three good sized bedrooms and a recently refitted three piece contemporary bathroom. To the rear there is a long enclosed garden laid in the main to lawn with a timber summerhouse and brick built storage sheds.

TOTAL FLOOR AREA

71 sq.m.

TENURE

Freehold

COUNCIL TAX

Somerset Council Tax Band B. Charges for 2024/25 - £1,662.92

SERVICES

Main services of gas, electricity, water and drainage are connected.

Broadband/Mobile phone coverage - The options of standard, superfast and ultrafast broadband with speeds up to 1000mbps are available. For an indication of broadband speeds as well as mobile phone signal and coverage available please refer to the 'Ofcom checker' website.

