



# TO LET

## **Stromness Road, Southend-On-Sea SS2 4JG**

£1,150 PCM Deposit Required - £1,326 Council Tax Band - A

- Two Bedroom Flat
- First Floor
- Double Bedroom
- Small Nursery Room
- Cosy Living Room
- Double Glazed Throughout
- Separate Dining Area
- Modern Kitchen & Bathroom
- Great Transport Links
- Call Now To Arrange A Viewing

**Appointmoor Rental**  
72 The Ridgeway, Chalkwell, Westcliff, Essex, SS0 8NU  
T. 01702 719 966 W. [appointmoor.co.uk](http://appointmoor.co.uk)

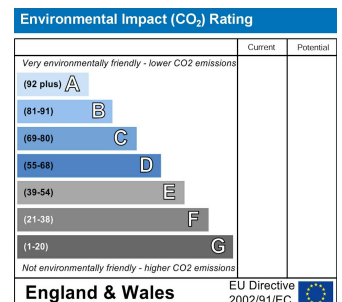
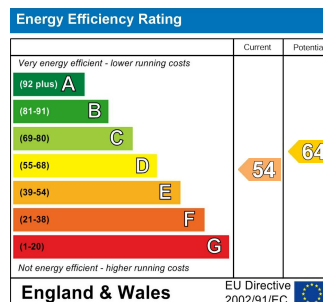
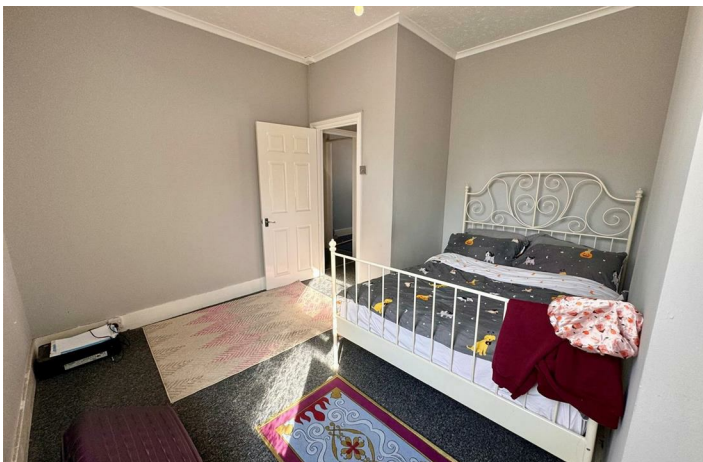
**appointmoor**



# Description

Charming two bedroom first floor flat located on Stromness Road in the picturesque Southend-on-Sea. This delightful first-floor flat boasts a cosy reception room, perfect for relaxing. With two bedrooms, one being a double the second a nursery room. The property also features a well-maintained bathroom and kitchen with an additional dining space.

The location is ideal for those seeking a peaceful neighbourhood with easy access to local amenities and transport links. Call Now To Arrange A Viewing.



**AGENTS NOTES:** Appointment Estates Ltd as our Vendors Agents have endeavoured to check the accuracy of these sales particulars, but however, can offer no guarantee. These details are prepared as a general guide only, including details regarding lease, service charge, lease length and ground rent/review periods, council tax and deposit amount, and should not be relied upon as a basis to enter into a legal contract, or commit expenditure. An interested party should consult their own independent experts to verify the statements contained herein and before committing themselves to any expenditure or other legal commitments. The agent will not be responsible for any verbal statement made by any member of staff, as only a specific written confirmation should be relied upon. The agent will not be responsible for any loss other than when specific written confirmation has been requested. Floor plans are not to scale and only provide an indication of the layout. All measurements are approximate and should not be relied upon. We have not tested any apparatus, equipment, fixture, fittings or service and so cannot verify they are in working order, fit for their purpose, or within ownership of the sellers. Items shown in photographs are NOT included unless specifically mentioned in writing within the sales particulars. **VIEWINGS: BY APPOINTMENT ESTATES ONLY**