



# TO LET

## Glendale Gardens, Leigh-On-Sea SS9 2BG

£1,150 PCM

- One Bedroom Flat
- Ground Floor
- Communal Rear Garden
- Central Leigh Location
- Close To Leigh Broadway
- Double Glazing Throughout
- Gas Central Heating
- Parking
- Good Condition Throughout
- Call To Arrange A Viewing

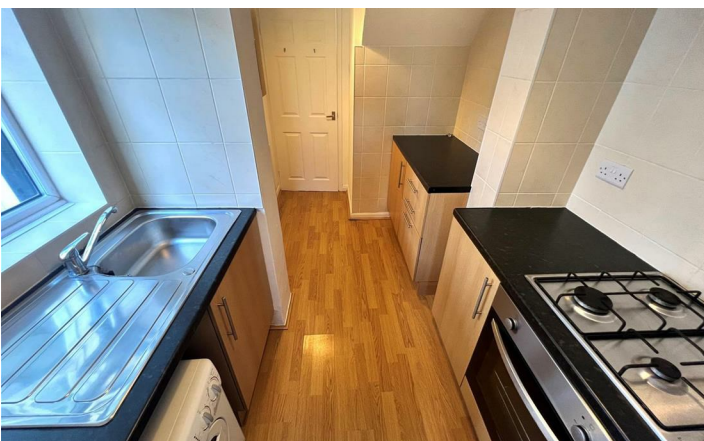
Appointmoor Rental APMS 72 The  
Ridgeway, Chalkwell, Westcliff, Essex, SS0  
8NU  
T. 01702 719 966 W. [appointmoor.co.uk](http://appointmoor.co.uk)

**appointmoor**



## Description

Appointmoor have available to let this MODERN one bedroom GROUND FLOOR FLAT with a communal garden and ALLOCATED PARKING in Leigh on Sea located within a few minutes walk to the popular Leigh Broadway and c2c Train Station. The property consists of a spacious lounge, one double bedroom, recently fitted kitchen & shower room. Direct access to the rear garden. Double Glazed. Gas central heating (n/t).



| Energy Efficiency Rating                    |  | Current                 | Potential |
|---|--|-------------------------|-----------|
| Very energy efficient - lower running costs |  |                         |           |
| (92 plus) A                                 |  |                         |           |
| (81-91) B                                   |  |                         |           |
| (69-80) C                                   |  |                         |           |
| (55-68) D                                   |  |                         |           |
| (39-54) E                                   |  |                         |           |
| (21-38) F                                   |  |                         |           |
| (1-20) G                                    |  |                         |           |
| Not energy efficient - higher running costs |  |                         |           |
|   |  | 71                      | 76        |
| England & Wales                             |  | EU Directive 2002/91/EC |           |

| Environmental Impact (CO <sub>2</sub> ) Rating                  |  | Current                 | Potential |
|---|--|-------------------------|-----------|
| Very environmentally friendly - lower CO <sub>2</sub> emissions |  |                         |           |
| (92 plus) A   |  |                         |           |
| (81-91) B   |  |                         |           |
| (69-80) C   |  |                         |           |
| (55-68) D   |  |                         |           |
| (39-54) E   |  |                         |           |
| (21-38) F   |  |                         |           |
| (1-20) G  |  |                         |           |
| Not environmentally friendly - higher CO <sub>2</sub> emissions |  |                         |           |
| England & Wales   |  | EU Directive 2002/91/EC |           |