



FOR SALE

Grosvenor Road, Westcliff-On-Sea SS0 8EN

Asking Price £1,050,000 Freehold Council Tax Band -

17  18  2  4759.00 sq ft

- Link Detached 17 Bedroom Hotel
- 4,759 Square Footage
- Ideal Investment/Development Opportunity
- Three Floors of Accommodation
- 17 En-Suite Bedrooms
- 6 Off Street Parking Spaces to Front
- Rear Garden
- Moments from Chalkwell Seafront
- Short Walk to Westcliff Station
- Superb Potential STPP

Selling & letting all types of property in Chalkwell,
Westcliff, Leigh, Southend and the surrounding areas.

appointmoor

Description

Superb investment/development opportunity, a 17 bedroom/17 bathroom link detached hotel located in a fantastic Chalkwell location just moments from the seafront. This imposing property offers 4,759 square footage of internal space over three floors, external rear garden and off street parking for several vehicles to the front. This beautiful property offers many exciting development, business or investment opportunities STPP, viewing is highly advised.

Link Detached Property

Superb investment/development opportunity, a 17 bedroom/17 bathroom link detached hotel located in a fantastic Chalkwell location just moments from the seafront. This imposing property offers 4,759 square footage of internal space over three floors, external rear garden and off street parking for several vehicles to the front.

Ground Floor

Entrance hallways to right & left side accommodation with connecting doorway. Stairs and lift to first floor, reception room to lobby, kitchen with storage room, laundry and shower room.

Bedroom 11 - 13' x 12'7 with en-suite
Bedroom 12 - 11'1 x 10' with en-suite
Bedroom 2 - 17'7 x 13'2 with en-suite
Bedroom 1 - 17'7 x 13'2 with en-suite

First Floor

Bedroom 4 - 14'3 x 13'3 with en-suite
Bedroom 5 - 14'3 x 12'1 with en-suite
Bedroom 16 - 9'8 x 7'5 with en-suite
Bedroom 17 - 9'8 x 7'6 with en-suite
Bedroom 9 - 11'7 x 11'6 with en-suite
Bedroom 10 - 11'4 x 11'3 with en-suite
Bedroom 6 - 15' x 10'9 with en-suite
Bedroom 13 - 10'1 x 7'4 with en-suite
Bedroom 7 - 13' x 9'9 with en-suite

Second Floor

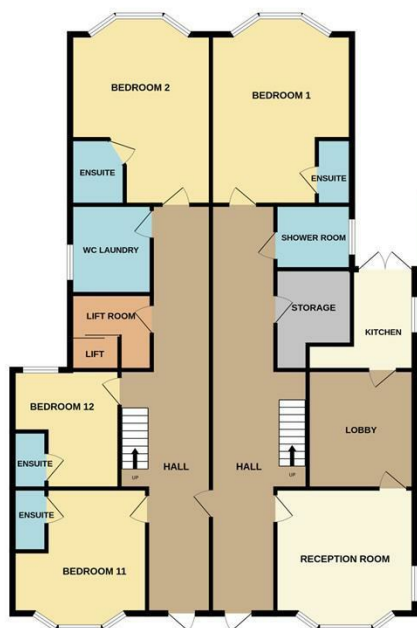
Bedroom 3 - 18'6 x 13'10 with en-suite
Bedroom 8 - 11'1 x 10'7 with en-suite
Bedroom 14 - 11'11 x 11'7 with en-suite
Bedroom 15 - 12 x 11'7 with en-suite

Externally

Garden to rear aspect.
Off street parking to front aspect for 6 vehicles.



GROUND FLOOR



1ST FLOOR



2ND FLOOR



Whilst every attempt has been made to ensure the accuracy of the floorplan contained here, measurements of doors, windows, rooms and any other items are approximate and no responsibility is taken for any error, omission or mis-statement. This plan is for illustrative purposes only and should be used as such by any prospective purchaser. The services, systems and appliances shown have not been tested and no guarantee as to their operability or efficiency can be given.
Made with Metropix ©2025



Energy Efficiency Rating

	Current	Potential
Very energy efficient - lower running costs		
(92 plus) A		
(81-91) B		
(69-80) C		
(55-68) D		
(39-54) E	58	58
(21-38) F		
(1-20) G		
Not energy efficient - higher running costs		
England & Wales	EU Directive 2002/91/EC	

Environmental Impact (CO₂) Rating

	Current	Potential
Very environmentally friendly - lower CO ₂ emissions		
(92 plus) A		
(81-91) B		
(69-80) C		
(55-68) D		
(39-54) E		
(21-38) F		
(1-20) G		
Not environmentally friendly - higher CO ₂ emissions		
England & Wales	EU Directive 2002/91/EC	

AGENTS NOTES: Every care has been taken with the preparation of these particulars, but complete accuracy cannot be guaranteed. If there is any point, which is of particular importance to you, please obtain professional confirmation. Alternatively, we will be pleased to check the information for you. All measurements quoted are approximate. Floor plans are not to scale. The Fixtures, Fittings & Appliances have not been tested and therefore no guarantee can be given that they are in working order. Photographs are reproduced for general information, and it cannot be inferred that any item shown is included in the sale.

VIEWINGS: BY APPOINTMOOR ESTATES ONLY

appointmoor



facebook.com/appointmoor



Instagram.com/appointmoor_estate_agents



twitter.com/appointmoor



linkedin.com/company/appointmoor

Appointmoor Sales 72 The Ridgeway,
Chalkwell, Westcliff-on-Sea, Essex, SS0 8NU
T. 01702 719966 W. appointmoor.co.uk