



FOR SALE

Southbourne Grove, Westcliff-On-Sea SS0 0AQ

Offers In The Region Of £1,150,000 Freehold Council Tax Band - F

- Stunning Detached Six Bedroom Home
- Three Reception Rooms
- Beautiful Original Character Features
- Large Rear Garden
- Outbuilding With Heating/Aircon
- In & Out Driveway With Parking For Several Vehicles
- Fitted Kitchen/Breakfast Room With Space For Appliances
- Situated Within Close Access To The A127
- Access To Chalkwell & Southend Airport Station
- Spacious Loft Room

Selling & letting all types of property in Chalkwell,
Westcliff, Leigh, Southend and the surrounding areas.

appointmoor

Description

We are pleased to bring to market Southbourne Grove of Westcliff-On-Sea, this beautiful six-bedroom detached family home is a true gem waiting to be discovered. Boasting a generous 3,188 sq ft of living space, this property has been lovingly extended and renovated throughout, offering a perfect blend of modern amenities and gorgeous original character features.

As you step inside, you are greeted by a large entrance hall, three inviting reception rooms, ideal for entertaining guests or simply relaxing with your loved ones. The large kitchen/breakfast room is a culinary delight, providing ample space for creating delicious meals and lasting memories.

With six fantastically sized bedrooms and four bathrooms, there is no shortage of space for the whole family to unwind and recharge. The in and out driveway offers parking for several vehicles, making coming and going a breeze.

Conveniently located just a short distance from Chalkwell and Southend Airport station taking you directly into London Fenchurch Street. You are also within catchment areas for some great schools. This property combines the tranquillity of suburban living with easy access to transportation links. Don't miss out on the opportunity to make this stunning property your new home sweet home.





Entrance Hall

Beautiful double single glazed obscure glass stained doors to entrance, original Parquet flooring, double glazed bay window to front aspect with window seat, radiator, panelled walls, storage cupboard, picture rail, coving to ceiling, pendant lighting.

Lounge

Original Parquet flooring, radiator, double glazed bay windows to front and side aspect, feature fireplace located in snug area with log burner and seating, serving hatch single glazed window, panelled walls, spotlight lighting.

Reception Room

Original Parquet flooring, radiator, double glazed obscure window to side aspect, fitted bar area with shelving space, stunning ornate cornice ceiling rose, pendant lighting.

Conservatory

Laminate flooring, double glazed windows to rear aspect, double glazed French doors to rear aspect, double glazed windows to side aspect, ceiling mounted lighting.

Kitchen/Breakfast Room

Tiled flooring, radiators, base & wall units, granite worksurface incorporating Butler style sink & drainer, rangemaster cooker with extractor over, space for fridge/freezer, integrated 'Miele' microwave, double glazed windows to rear aspect, breakfast bar space with seating, coving to ceiling, spotlight lighting.

Dining Room

Tiled flooring, radiator, double glazed French doors to rear aspect, vaulted ceiling with skylight, spotlight lighting.

Utility Room

Tiled flooring, base and wall units, rolltop worksurface, storage cupboard with space for appliances, spotlight lighting.

Shower Room

Laminae flooring, tiled walls, heated towel rail, vaulted skylight, hand basin, W/C, shower cubicle, spotlight lighting.

Bedroom/Study

Wooden flooring, radiator, double glazed window to front aspect, coving to ceiling, spotlight lighting.

Landing

Carpet flooring, vaulted skylight, radiator, wall mounted lighting, picture rail, pendant lighting.

Bedroom 1

Wooden flooring, radiator, double glazed bay window to side aspect, coving to ceiling, spotlight lighting.

En-Suite

Tiled flooring, heated towel rail, tiled walls, shower cubicle, W/C, hand basin with storage under, extractor, spotlight lighting.

Bedroom 2

Carpet flooring, radiator, double glazed bay windows to front & side aspect, coving to ceiling, pendant lighting & spotlight lighting.

Bedroom 3

Wooden flooring, radiator, double glazed window to rear aspect, pendant lighting.

En-Suite

Laminate flooring, heated towel rail, partially tiled walls, shower cubicle, hand basin with storage under, W/C, extractor, spotlight lighting.

Bedroom 4

Wooden flooring, radiator, double glazed window to rear aspect, panelled walls, storage cupboard, picture rail, spotlight lighting.

Family Bathroom

Tiled flooring, heated towel rail, double glazed obscure window to side aspect, tiled walls, bath with shower system plumbed, shower cubicle, his & hers hand basin, W/C, spotlight lighting.

Bedroom 5

Wooden flooring, radiator, double glazed window to front aspect, coving to ceiling, spotlight lighting.

Bedroom 6

Wooden flooring, radiator, double glazed window to front aspect, coving to ceiling, pendant lighting.

Loft Room

Wooden flooring, double glazed skylights to side aspect, spotlight lighting.

Outbuilding

Single glazed wooden doors to entrance, wooden flooring, fully insulated with aircon system installed, power, lighting & WIFI, ceiling mounted lighting.

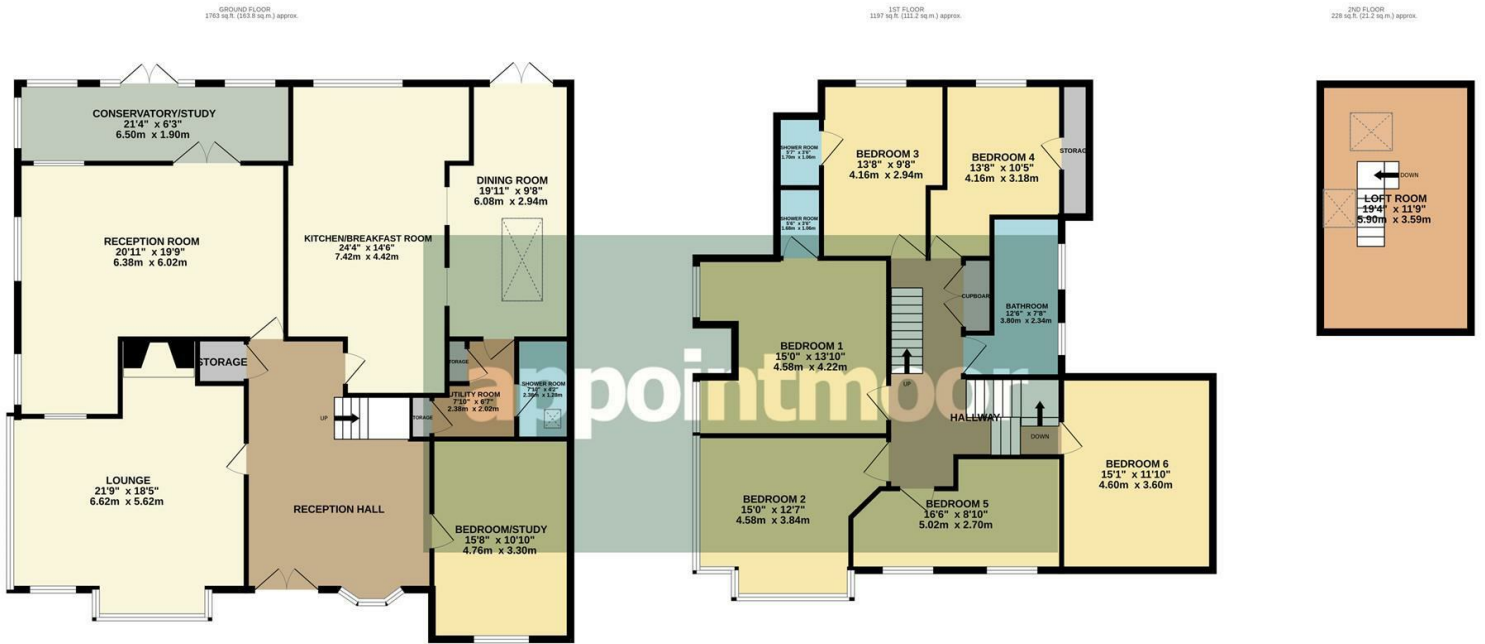
Rear Garden

Large patio seating area perfect for entertaining the family, laid lawn, shrubs & flowerbeds, mature tress, side access.

Front Of Property

Block paved in and out driveway with space for several vehicles, shrubs & flowerbeds.





TOTAL FLOOR AREA : 3188 sq.ft. (296.2 sq.m.) approx.

Whilst every attempt has been made to ensure the accuracy of the floorplan contained here, measurements of doors, windows, rooms and any other items are approximate and no responsibility is taken for any error, omission or mis-statement. This plan is for illustrative purposes only and should be used as such by any prospective purchaser. The services, systems and appliances shown have not been tested and no guarantee as to their operability or efficiency can be given.
Made with Metropix ©2024



Energy Efficiency Rating		Current	Potential
Very energy efficient - lower running costs			
(92 plus) A			
(81-91) B			
(69-80) C			
(55-68) D			
(39-54) E			
(21-38) F			
(1-20) G			
Not energy efficient - higher running costs			
England & Wales	EU Directive 2002/91/EC	53	74

Environmental Impact (CO ₂) Rating		Current	Potential
Very environmentally friendly - lower CO ₂ emissions			
(92 plus) A			
(81-91) B			
(69-80) C			
(55-68) D			
(39-54) E			
(21-38) F			
(1-20) G			
Not environmentally friendly - higher CO ₂ emissions			
England & Wales	EU Directive 2002/91/EC		

AGENTS NOTES: Appointmoor Estates Ltd as our Vendors Agents have endeavoured to check the accuracy of these sales particulars, but however, can offer no guarantee. These details are prepared as a general guide only, including details regarding lease, service charge, lease length and ground rent/review periods, council tax and deposit amount, and should not be relied upon as a basis to enter into a legal contract, or commit expenditure. An interested party should consult their own independent experts to verify the statements contained herein and before committing themselves to any expenditure or other legal commitments. The agent will not be responsible for any verbal statement made by any member of staff, as only a specific written confirmation should be relied upon. The agent will not be responsible for any loss other than when specific written confirmation has been requested. Floor plans are not to scale and only provide an indication of the layout. All measurements are approximate and should not be relied upon. We have not tested any apparatus, equipment, fixture, fittings or service and so cannot verify they are in working order, fit for their purpose, or within ownership of the sellers. Items shown in photographs are NOT included unless specifically mentioned in writing within the sales particulars.
VIEWINGS: BY APPOINTMOOR ESTATES ONLY

appointmoor

Appointmoor Sales 72 The Ridgeway,
Chalkwell, Westcliff-on-Sea, Essex, SSO 8NU
T. 01702 719966 W. appointmoor.co.uk

- facebook.com/appointmoor
- instagram.com/appointmoor_estate_agents
- twitter.com/appointmoor
- linkedin.com/company/appointmoor