



FOR SALE

Salisbury Avenue, Westcliff-On-Sea SS0 7AX

Offers In Excess Of £275,000 Freehold Council Tax Band - B

- Three Bedroom End Of Terraced Home
- Fitted Kitchen With Space For Appliances
- Two Reception Rooms
- Maintainable Rear Garden
- Situated Close To Southend High Street
- Walking Distance To Southend Victoria Station
- Spacious Bedrooms
- Three Piece Bathroom
- Perfect For A First Time Buyer Or Property Investor
- Local Amenities Nearby

Selling & letting all types of property in Chalkwell,
Westcliff, Leigh, Southend and the surrounding areas.

appointmoor

Description

Welcome to Salisbury Avenue, Westcliff-On-Sea! This charming terraced house, built in circa 1910, is a true gem waiting to be discovered. With two reception rooms and three generously sized bedrooms, this property offers ample space, perfect for if you are a first time buyer or property investor. With a spacious fitted kitchen with room for all your appliances, making meal preparation a breeze. The two reception rooms provide versatile spaces for entertaining guests or simply relaxing with your loved ones.

The location of this three-bedroom end of terraced home is

simply unbeatable. Situated close to Southend High Street and Southend Victoria Station, convenience is at your doorstep. Imagine the ease of access to shops, restaurants, and transportation options - everything you need is within reach.

Whether you are a first-time buyer looking for a place to call home or an investor seeking a promising opportunity, this property ticks all the boxes.

Entrance

Double glazed obscure panelled door to entrance, carpet flooring, coving to ceiling.

Concrete paved pathway to entrance, on street parking.

Lounge

Carpet flooring, radiator, double glazed bay window to front aspect, coving to ceiling, pendant lighting.

Dining Room

Carpet flooring, radiator, double glazed obscure door to rear aspect, pendant lighting.

Kitchen

Laminate flooring, radiator, double glazed window to side aspect, double glazed obscure window to side aspect, double glazed sliding door to rear aspect, base & wall units, 4 point electric hob with extractor over, integrated oven, rolltop worksurface incorporating stainless steel sink & drainer, space for fridge/freezer, space and plumbing for washing machine, ceiling mounted lighting.

W/C

Laminate flooring, double glazed obscure window to rear aspect, W/C, hand basin, ceiling mounted lighting.

Landing

Carpet flooring, loft access, pendant lighting.

Bedroom 1

Carpet flooring, radiator, double glazed window to rear aspect, feature fireplace, pendant lighting.

Bedroom 2

Carpet flooring, radiator, double glazed window to rear aspect, feature fireplace, pendant lighting.

Bathroom

Laminate flooring, heated towel rail, double glazed window to front aspect, panelled bath with shower system over, hand basin, W/C, partially tiled walls, extractor, ceiling mounted lighting.

Bedroom 3

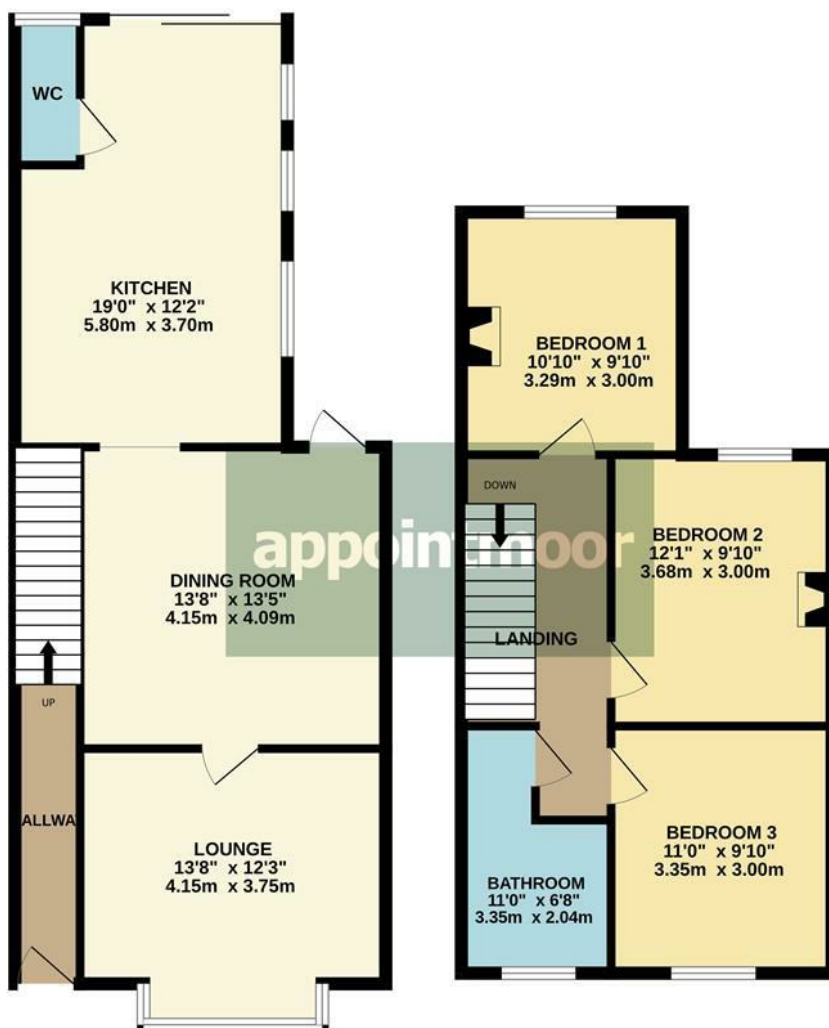
Carpet flooring, radiator, double glazed window to front aspect, pendant lighting.

Rear Garden

Patio seating area, laid lawn, shed to remain.

Front Of Property & Parking





TOTAL FLOOR AREA : 1122 sq.ft. (104.2 sq.m.) approx.

Whilst every attempt has been made to ensure the accuracy of the floorplan contained here, measurements of doors, windows, rooms and any other items are approximate and no responsibility is taken for any error, omission or mis-statement. This plan is for illustrative purposes only and should be used as such by any prospective purchaser. The services, systems and appliances shown have not been tested and no guarantee as to their operability or efficiency can be given.
Made with Metropix ©2024



Energy Efficiency Rating		Current	Potential
Very energy efficient - lower running costs			
(92 plus) A			78
(81-91) B			
(69-80) C			
(55-68) D		56	
(39-54) E			
(21-38) F			
(1-20) G			
Not energy efficient - higher running costs			
England & Wales		EU Directive 2002/91/EC	

Environmental Impact (CO ₂) Rating		Current	Potential
Very environmentally friendly - lower CO ₂ emissions			
(92 plus) A			78
(81-91) B			
(69-80) C			
(55-68) D			
(39-54) E			
(21-38) F			
(1-20) G			
Not environmentally friendly - higher CO ₂ emissions			
England & Wales		EU Directive 2002/91/EC	

AGENTS NOTES: Appointmoor Estates Ltd as our Vendors Agents have endeavoured to check the accuracy of these sales particulars, but however, can offer no guarantee. These details are prepared as a general guide only, including details regarding lease, service charge, lease length and ground rent/review periods, council tax and deposit amount, and should not be relied upon as a basis to enter into a legal contract, or commit expenditure. An interested party should consult their own independent experts to verify the statements contained herein and before committing themselves to any expenditure or other legal commitments. The agent will not be responsible for any verbal statement made by any member of staff, as only a specific written confirmation should be relied upon. The agent will not be responsible for any loss other than when specific written confirmation has been requested. Floor plans are not to scale and only provide an indication of the layout. All measurements are approximate and should not be relied upon. We have not tested any apparatus, equipment, fixture, fittings or service and so cannot verify they are in working order, fit for their purpose, or within ownership of the sellers. Items shown in photographs are NOT included unless specifically mentioned in writing within the sales particulars.

VIEWINGS: BY APPOINTMOOR ESTATES ONLY

appointmoor

- facebook.com/appointmoor
- Instagram.com/appointmoor_estate_agents
- twitter.com/appointmoor
- linkedin.com/company/appointmoor

Appointmoor Sales 72 The Ridgeway,
Chalkwell, Westcliff-on-Sea, Essex, SSO 8NU
T. 01702 719966 W. appointmoor.co.uk