



Knowsley Road, Macclesfield, SK11 8AP
£550,000

Whittaker
& Biggs
Est. 1930

Knowsley Road, Macclesfield

Whittaker and Biggs are proud to offer for sale this spacious, corner plot detached family home situated in a sought-after residential area of Macclesfield. The property is located within easy reach of the town center shopping facilities, popular schooling and recreational spaces. The property offers flexible living accommodation to suit a wide audience particularly those seeking accommodation for a dependent relative or teenage space plus home working. To the ground floor there is an office, lounge, open plan dining kitchen, ground floor shower room, family room, storage and utility. To the first floor there are four bedrooms with the master affording an en-suite shower room. Externally, there are lawned gardens to both front and rear, patio area, ample off-road parking to the front which extends to the remainder of the garage space/additional store. This well-presented family home offers a fantastic opportunity for those looking for spacious and versatile accommodation in a prime location.



Entrance

Double glazed door through to the entrance hall.

Entrance Hall

Radiator, stairs to the first floor landing

Office 9' 9" x 8' 7" (2.97m x 2.62m)

Double glazed window, radiator

Living room 24' 6" x 11' 1" (7.47m x 3.38m)

Large formal lounge with a double glazed bay window to the front, feature burner with a tiled back panel, double doors and single door through to the open plan dining area and kitchen.

Kitchen/ Diner 20' 6" x 24' 5" (9.30m x 7.44m)

A large open plan dining kitchen with a double glazed window and doors leading out to the rear garden. Dining area with a vertical radiator, space for a family dining table. Kitchen area fitted with modern comprehensive range of wall, base and drawer units, granite worksurfaces, stainless steel sink unit with a mixer tap over, electric oven, gas hob, extractor, integrated dishwasher, space for an American style fridge freezer, vertical radiator, door to inner hall having a useful pantry and access to the ground floor wet room.

Wet Room

Fully tiled wet room having a mains shower, back to the wall vanity furniture incorporating a WC and wash hand basin, heated towel rail.

Family Room 11' 0" x 8' 1" (3.36m x 2.47m)

Double glazed doors and two vertical radiators.

Utility room 7' 4" x 7' 6" (2.23m x 2.28m)

Base level storage unit, single drainer sink unit, plumbing point for a washing machine, space for a tumble dryer, radiator, door through to the boot room and remainder of what was the original garage, providing additional storage space

First Floor Landing

Access to the loft space

Bedroom 1 13' 1" x 8' 4" (3.98m x 2.54m)

Double glazed window, built in wardrobe, radiator.

En-Suite

Shower cubicle, mains shower, WC and wash hand basin, tiled walls, heated towel rail, double glazed window.

Bedroom 2 11' 2" x 9' 3" (3.41m x 2.82m)

Double glazed window, radiator

Dressing Room 9' 1" x 9' 5" (2.77m x 2.88m)

Double glazed window, radiator, doorway to bedroom 3.

Bedroom 3 13' 6" x 7' 7" (4.12m x 2.32m)

Double glazed window, radiator.

Bedroom 4 10' 11" x 8' 4" (3.34m x 2.54m)

Double glazed window, radiator.

Bathroom

Panel bath, mains shower, shower screen, WC and vanity wash hand basin, heated towel rail, fully tiled walls, double glazed window.

Externally

To the front there is a lawned garden with stocked borders and a block paved driveway providing ample off road parking. To the rear, there is a large patio and storage shed.

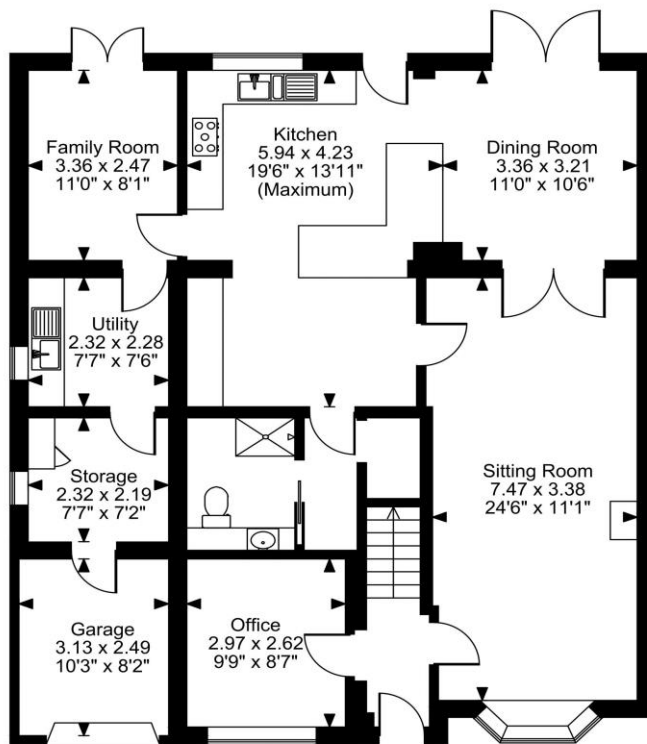
Note:

Council Tax Band: E

EPC Rating: C

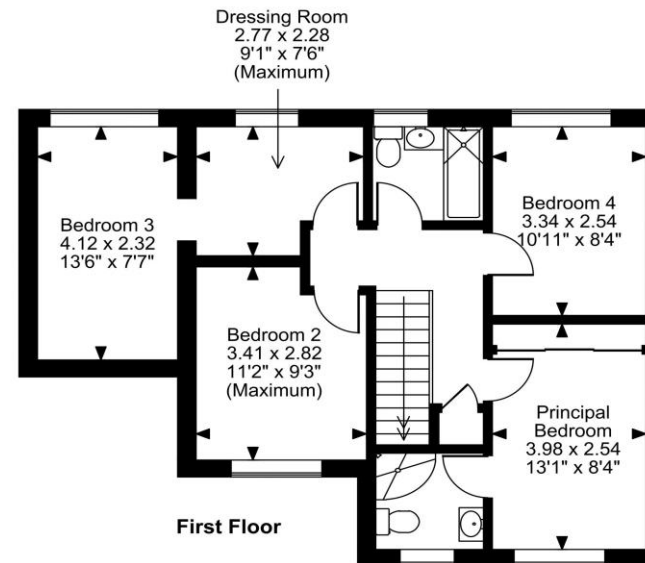
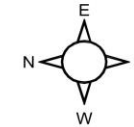
Tenure: believed to be Freehold





Ground Floor

Knowsley Road, Macclesfield
Approximate Gross Internal Area
Main House = 1796 Sq Ft/167 Sq M
Garage = 83 Sq Ft/8 Sq M
Total = 1879 Sq Ft/175 Sq M



First Floor

FOR ILLUSTRATIVE PURPOSES ONLY - NOT TO SCALE

The position & size of doors, windows, appliances and other features are approximate only.
© ehouse. Unauthorised reproduction prohibited. Drawing ref. dig/8639042/NGS

Directions

From this office turn right opposite the railway station onto Sunderland Street. Proceed through the traffic lights and take the first exit at the mini roundabout onto Park Lane. At the traffic lights turn left into Ryles Park Road. Bear round to the right into Western Avenue then first turning left into Knowsley Road.

IMPORTANT: Whittaker & Biggs for themselves and for the vendors or lessors of this property whose agents they are give notice that the particulars are produced in good faith and are set out as a general guide only and do not constitute any part of a contract and no person in the employment of Whittaker & Biggs estate agents has any authority to make or give any representation or warranty in relation to this property. The agent has not tested any apparatus, equipment, fittings or services and so cannot guarantee they are in working order, or fit for their purpose. The agent would also like to point out that the majority of the photographs used on their brochures and window displays are taken with non standard lenses.

2 - 4 Church Street Macclesfield Cheshire SK11 6LB

T: 01625 430044

E: macclesfield@whittakerandbiggs.co.uk

www.whittakerandbiggs.co.uk

Est. 1930
**Whittaker
& Biggs**