

SPENCE WILLARD



The Pump House, Yarmouth, Isle of Wight, PO41 0QZ

A substantial modern detached three-bedroom house with parking which has just had major refurbishment by local builders of high repute; all ideally situated with in a stone's throw from the River Yar footpath/cycleway.

VIEWING

YARMOUTH@SPENCEWILLARD.CO.UK 01983 761005 WWW.SPENCEWILLARD.CO.UK



The Pump House is offered chain free and is exceptionally well located within 5 minutes walking distance of the shops, harbour and ferry terminal of this sought-after town and benefits from gravel and block paved off street parking to the front. The property has undergone extensive changes including some configuration, new heating, bathrooms, kitchen, re-landscape and is now a superb modern house which has been finished to an exceptionally high standard. In essence, this 3 / 4-bedroom house has the feeling of a new build.

It is a high-quality, modern in a quiet sought-after position within the town and has the benefit of two car parking spaces, garden, balcony and a large sitting room. There is a large, boarded loft, ideal for storage. Constructed around 20 years ago, the recently completed works in 2023 have delivered an impressive offering, of the type that are unusual to come to the market in the town.

It sits well away from the main road and outside of the Yarmouth Conservation Area and just meters from the River Yar foot/bike path. The property enjoys a south facing roof terrace, and garden space on the east, south and west side of the house to benefit from sunshine all day. The rear garden/courtyard offers a high level of privacy and is perfect for a new owner who doesn't want a large garden to manage - it also works very well as a 'lock up and leave property'.

Accommodation

The ground floor consists of a large open plan KITCHEN/DINER with a central island unit - all of which are neutrally decorated and all benefit from new, high-quality units. There is a newly fitted ground floor WC with wash hand basin and an adjoining well equipped utility room. On the west side is a bedroom which is also perfectly suited to a study/further sitting room with a full length of built in cupboards.

The first floor has two good sized double bedrooms and a lounge which has an enclosed south-west facing roof terrace with balustrades. Two separate shower rooms have been fitted, both of which have a window, w/c and wash hand basin. Bedroom 1 benefits from an east facing aspect and a roof skylight and large built in wardrobes along the full length of the wall.

The house offers a large light and airy living area with vaulted ceiling bedrooms on the first floor and a contemporary kitchen area on the ground floor. The property was specifically constructed for ease of maintenance, and it is of traditional construction with recently painted Colourtex low maintenance finish, rendered elevation. There is underfloor heating through out the property and has a recently installed whole house water softener. The sale will include carpets, curtains and blinds.

Outside

To the front of the property is a gravelled and block paved parking area for cars or boats to be stored, to the rear of the property is an enclosed courtyard garden.

Tenure

Freehold.

EPC Rating

E.

Council Tax

Band E.

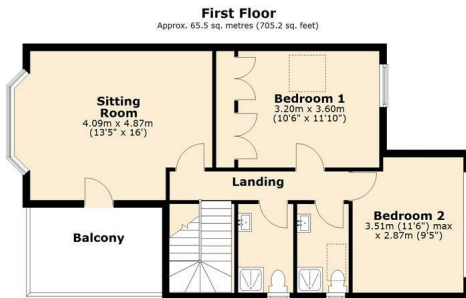
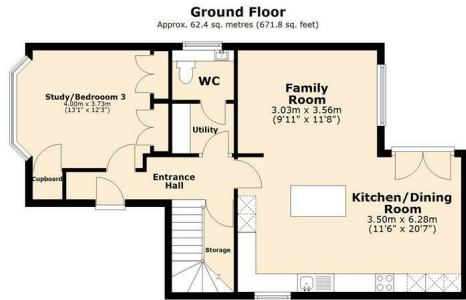
Services

Mains water, gas, drainage and electricity serve the property.

Viewings

All viewings will be strictly by prior arrangement with the selling agents, Spence Willard.





Total area: approx. 127.9 sq. metres (1376.9 sq. feet)

SKETCH FOR ILLUSTRATIVE PURPOSES ONLY. All measurements, walls, doors, windows, suites, fittings and appliances, sizes and locations are approximate only. They cannot be considered as being a representation by the seller or agent. Some appliances, suite or furniture icons may not reflect the actual design present. Plan produced by Silver Arch Property Solutions Limited www.silverarchps.co.uk. Plan produced using Planip.

The Pump House, Mill Road, Yarmouth, PO41 0QZ



SPENCEWILLARD.CO.UK

Important Notice

1. Particulars: These particulars are not an offer or contract, nor part of one. You should not rely on statements by Spence Willard in the particulars or by word of mouth or in writing ("information") as being factually accurate about the property, its condition or its value. Neither Spence Willard nor any joint agent has any authority to make any representations about the property, and accordingly any information given is entirely without responsibility on the part of the agents, seller(s) or lessor(s). 2. Photos etc: The photographs show only certain parts of the property as they appeared at the time they were taken. Areas, measurements and distances given are approximate only. 3. Regulations etc: Any reference to alterations to, or use of, any part of the property does not mean that any necessary planning, building regulations or other consent has been obtained. A buyer or lessee must find out by inspection or in other ways that these matters have been properly dealt with and that all information is correct. 4. VAT: The VAT position relating to the property may change without notice.