

Jonathan Hunt

ESTATE AGENCY

20 High Street Ware SG12 9BX

Tel: 01920 411090

8 High Street Buntingford SG9 9AG

Tel: 01763 272727

info@jonathan-hunt.co.uk

www.jonathanhunt.co.uk



1 Chadwell Rise, Ware, Hertfordshire, SG12 9LA

£900,000

JONATHAN HUNT are pleased to offer this excellent example of a 1930's semi detached character home. The property has been the subject of great improvements now offering a spacious and practical living space for the modern family. There's a magnificent open plan Kitchen/Dining/Family room with Bi-folding doors the rear gardens and an attractive Living room with parquet flooring and feature stain glass windows. The first floor offers three double bedrooms, two bathrooms and the second floor a wonderful master suite with enviable views across Ware and the KINGS MEADS. Viewing highly recommended

Buntingford Branch - Company No. 10303541 VAT No. 10303541

Ware Branch - Company No. 4759215 VAT No. 700174975

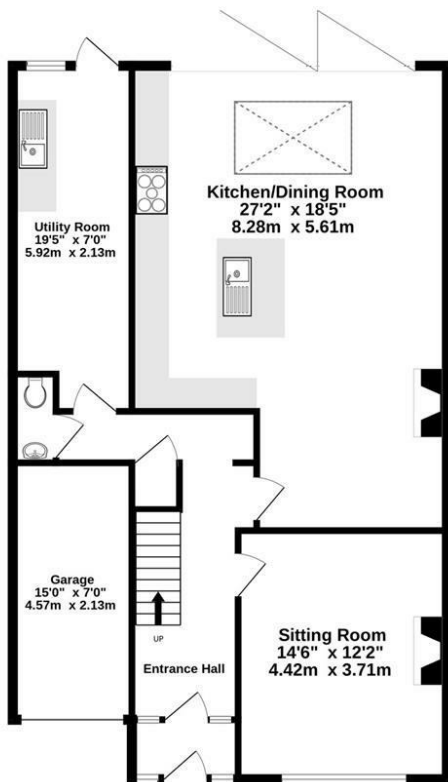
1 Chadwell Rise, Ware, Hertfordshire, SG12 9LA



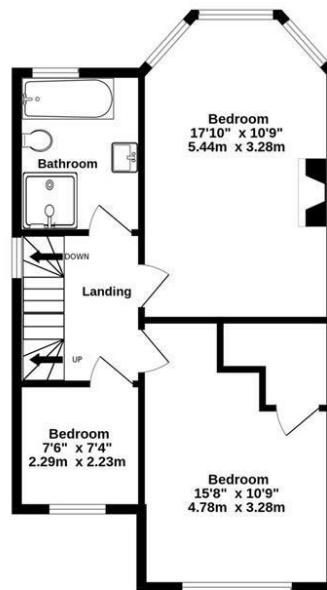
Energy Efficiency Rating		
	Current	Potential
Very energy efficient - lower running costs		
(92 plus) A		
(81-91) B		
(69-80) C		
(55-68) D		
(39-54) E		
(21-38) F		
(1-20) G		
Not energy efficient - higher running costs		
England & Wales	EU Directive 2002/91/EC	

Environmental Impact (CO ₂) Rating		
	Current	Potential
Very environmentally friendly - lower CO ₂ emissions		
(92 plus) A		
(81-91) B		
(69-80) C		
(55-68) D		
(39-54) E		
(21-38) F		
(1-20) G		
Not environmentally friendly - higher CO ₂ emissions		
England & Wales	EU Directive 2002/91/EC	

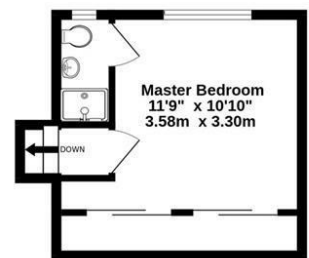
GROUND FLOOR
1020 sq.ft. (94.7 sq.m.) approx.



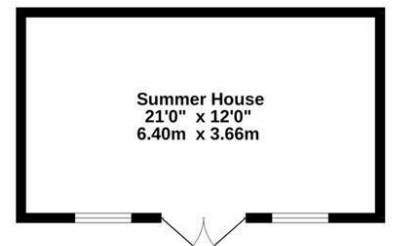
1ST FLOOR
541 sq.ft. (50.2 sq.m.) approx.



2ND FLOOR
209 sq.ft. (19.4 sq.m.) approx.



SUMMER HOUSE
253 sq.ft. (23.5 sq.m.) approx.



TOTAL FLOOR AREA : 2021 sq.ft. (187.8 sq.m.) approx.

Made with Metropix ©2025