

Jonathan Hunt

ESTATE AGENCY

20 High Street Ware SG12 9BX

Tel: 01920 411090

8 High Street Buntingford SG9 9AG

Tel: 01763 272727

info@jonathan-hunt.co.uk

www.jonathanhunt.co.uk



1c Priory Street, Ware, SG12 0DA

£199,995

JONATHAN HUNT are pleased to offer this well presented one bedroom top floor apartment within this attractive Georgian building. The property is located within the centre of Ware town, close to shops and Ware's train line to London. The property features a modern Kitchen and Bathroom, exposed wood flooring and roof top views.

Buntingford Branch - Company No. 10303541 VAT No. 10303541

Ware Branch - Company No. 4759215 VAT No. 700174975

1c Priory Street, Ware, SG12 0DA

ENTRANCE HALLWAY

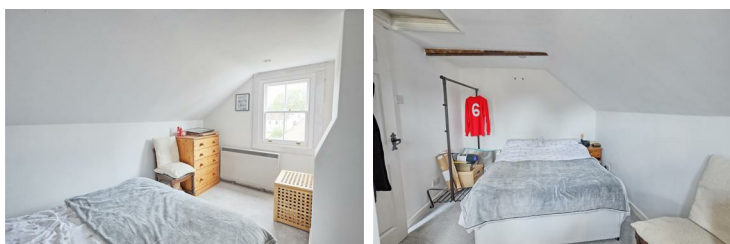
LIVING AREA 14'0" x 12'5" (4.27 x 3.81)



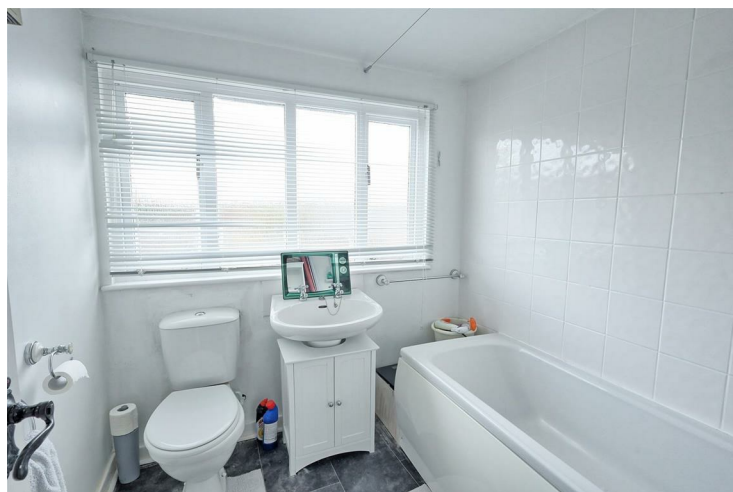
KITCHEN AREA



BEDROOM 12'7" x 8'2" (3.86 x 2.51)



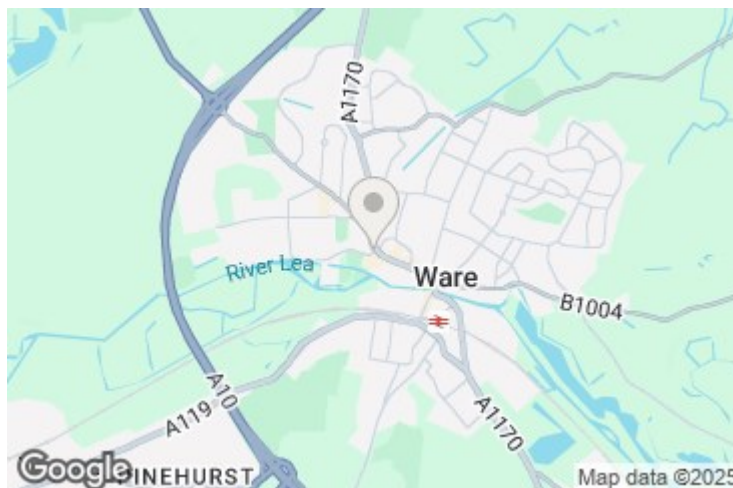
BATHROOM




EXTERIOR




ROOF TOP VIEWS



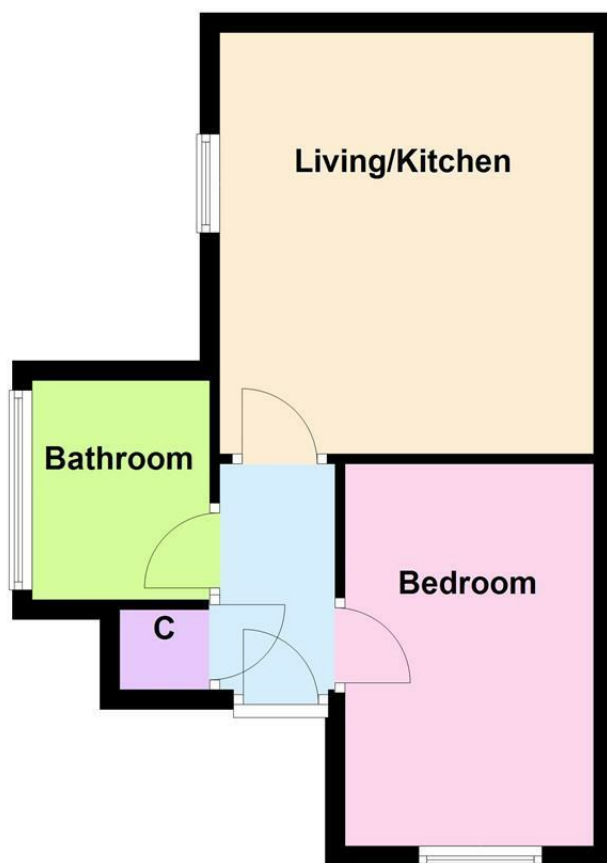
1c Priory Street, Ware, SG12 0DA

Energy Efficiency Rating		
	Current	Potential
Very energy efficient - lower running costs		
(92 plus) A		
(81-91) B		
(69-80) C		
(55-68) D		
(39-54) E		
(21-38) F		
(1-20) G		
Not energy efficient - higher running costs		
England & Wales	EU Directive 2002/91/EC	

Environmental Impact (CO ₂) Rating		
	Current	Potential
Very environmentally friendly - lower CO2 emissions		
(92 plus) A		
(81-91) B		
(69-80) C		
(55-68) D		
(39-54) E		
(21-38) F		
(1-20) G		
Not environmentally friendly - higher CO2 emissions		
England & Wales	EU Directive 2002/91/EC	

Ground Floor

Approx. 34.5 sq. metres (371.1 sq. feet)



Total area: approx. 34.5 sq. metres (371.1 sq. feet)

Whilst every attempt has been made to ensure the accuracy of the floor plan contained here, measurements of doors, windows, rooms and any other item are approximate and no responsibility is taken for any error, omission, or misstatement. This plan is for illustrative purposes only and should only be used as such by any prospective purchaser. Plan produced using PlanUp.