

Jonathan Hunt

ESTATE AGENCY

20 High Street Ware SG12 9BX

Tel: 01920 411090

8 High Street Buntingford SG9 9AG

Tel: 01763 272727

info@jonathan-hunt.co.uk

www.jonathanhunt.co.uk



Springers Barn Rushden Road, Sandon, SG9 0QP

£1,000,000

JONATHAN HUNT are pleased to offer this unique and contemporary detached home located in the picturesque village of Sandon, Buntingford. This beautiful purpose-built residence is set in an elevated position with unparalleled views across paddocks and Sandon's open countryside. CHAIN FREE

Buntingford Branch - Company No. 10303541 VAT No. 10303541

Ware Branch - Company No. 4759215 VAT No. 700174975

Springers Barn Rushden Road, Sandon, SG9 0QP

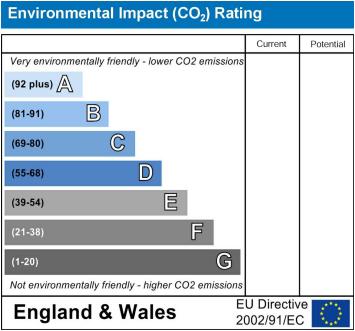
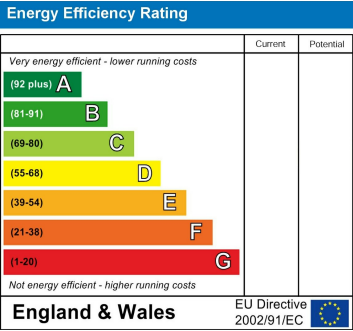
OVERVIEW

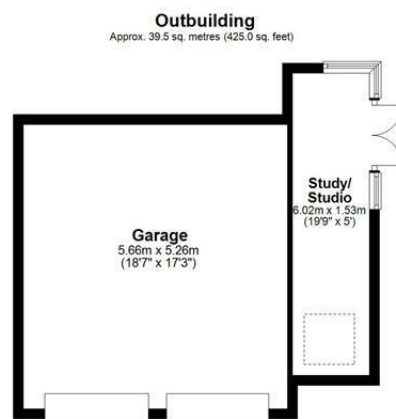
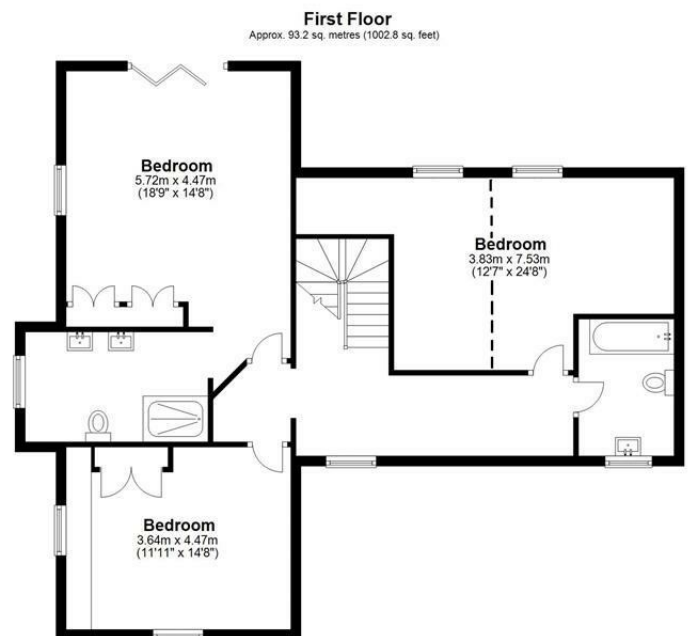
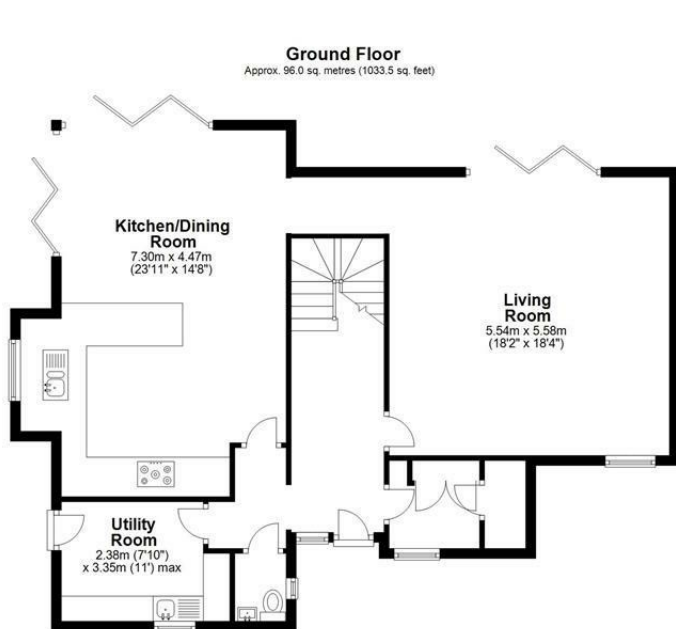
Enter the home via entrance hallway, providing access to the dual aspect living room, kitchen/dining living room, cloak room/WC, utility room and cloak cupboard. The kitchen/dining room has again been tastefully decorated with double glazed window to side and full height bi-fold doors to side/rear allowing for unobstructed views of the garden and countryside beyond. The kitchen comprises of a range of base/eye level units, breakfast bar, moulded worktops, inset four ring ceramic hob, double oven, integrated fridge freezer and boiling water tap. The kitchen/dining room also features underfloor heating and is served by a separate utility room.

To the first floor landing, accessed via a feature staircase with glass balustrade and leading to the home's three/four bedrooms. The principal bedroom truly is an impressive space with semi-vaulted ceilings, integrated wardrobes, fully tiled ensuite and a picturesque Juliet balcony with incredible views out across paddocks and the countryside beyond. The third bedroom has been constructed with a view to being two separate rooms and the vendor will undertake said work should the buyer wish. Each of the bedrooms again feature underfloor heating and are served by an attractive family bathroom.

Externally the property is approached by a set of electric gates to a large stone chipping drive with more than ample parking, leading to a double garage with loft storage. The rear garden is predominantly laid-to-lawn with landscaped planting and borders. A sizeable wrap round sun terrace is located at the immediate rear of the house, with separate raised seating area. The garden study/studio is fully insulated with electric power and heating.

Sandon is a charming village surrounded by unspoilt farmland and countryside located 5.9 (approx.) miles from Buntingford town centre and 5 miles (approx.) from the thriving market town of Royston which has a mainline station and excellent range of amenities. The village is also well placed for access to Baldock Railway Station & Ashwell and Morden Railway Station which provides consistent Great Northern and Thameslink services into London King's Cross, in under 45 minutes and Cambridge in under 30 minutes. The A1(M) is also easily accessible for direct access to London and neighbouring towns.





Total area: approx. 228.7 sq. metres (2461.3 sq. feet)