

# Jonathan Hunt

ESTATE AGENCY

20 High Street Ware SG12 9BX

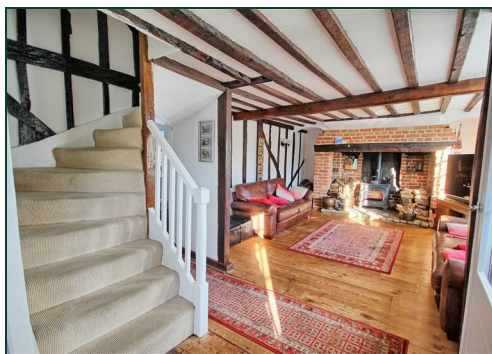
Tel: 01920 411090

8 High Street Buntingford SG9 9AG

Tel: 01763 272727

info@jonathan-hunt.co.uk

www.jonathanhunt.co.uk



**Little Quakers Colliers End, Herts, SG11 1ER**

**£595,000**

JONATHAN HUNT are pleased to offer this four bedroom period home offering accommodation over four floors. The property features a wealth of exposed original beams, inglenook fireplace with wood burning stove, exposed floor boards, modern kitchen/breakfast room, refitted bathroom and ensuite to master bedroom. Internal viewing advised.



## Little Quakers Colliers End, Herts, SG11 1ER

### ENTRANCE LOBBY

LOUNGE 15'0" x 13'5" (4.57 x 4.09)



### FIREPLACE



DINING ROOM 13'4" x 9'4" (4.06 x 2.84)



KITCHEN 10'10" x 9'4" (3.30 x 2.84)



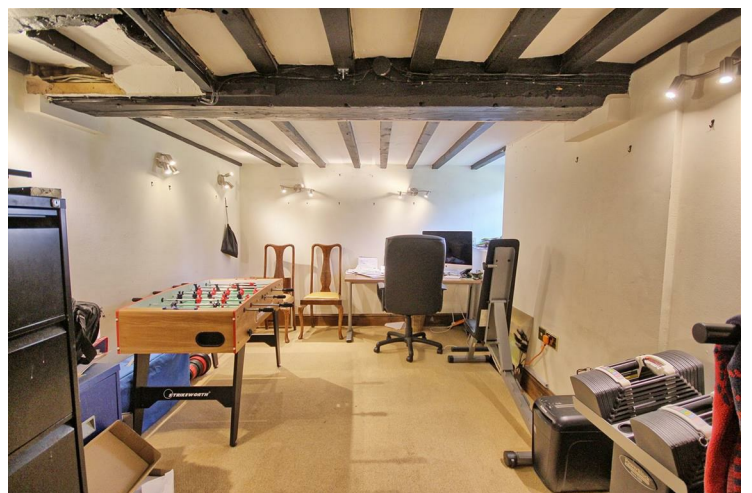
### BREAKFAST ROOM



### UTILITY ROOM

### GROUND FLOOR W.C.

BASEMENT ROOM 23'0" x 9'4" (7.01 x 2.84)





# Little Quakers Colliers End, Herts, SG11 1ER

## FIRST FLOOR



## BEDROOM FOUR 11'1" x 7'9" to 5'9" (3.38 x 2.36 to 1.75)



## BEDROOM ONE 13'7" x 11'6" (4.14 x 3.51)



## FAMILY BATHROOM



## EN SUITE



## SECOND FLOOR

## BEDROOM TWO 12'5" x 9'1" (3.78 x 2.77)





Little Quakers Colliers End, Herts, SG11 1ER

BEDROOM THREE 9'4" x 9'0" (2.84 x 2.74)



GARDENS



SECOND FLOOR W.C

EXTERIOR



FLOORPLAN



Total area: approx. 160.7 sq. metres (1729.4 sq. feet)

FRONT OF PROPERTY



COUNCIL TAX BAND E





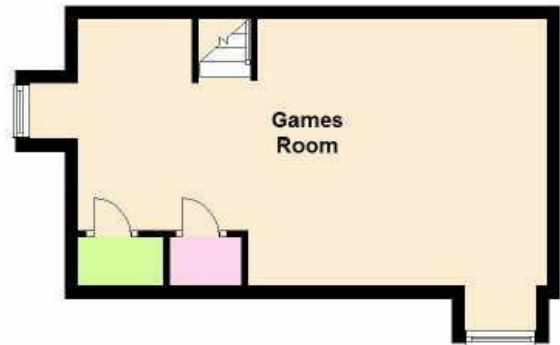
### Ground Floor

Approx. 61.1 sq. metres (657.7 sq. feet)



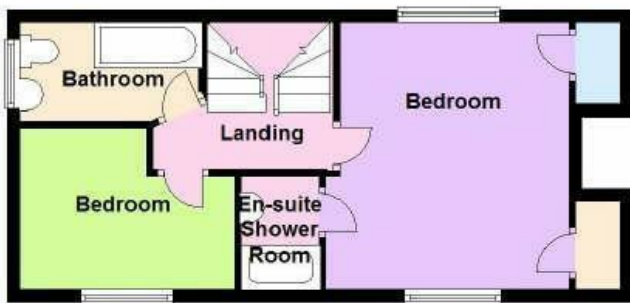
### Basement

Approx. 31.7 sq. metres (341.7 sq. feet)



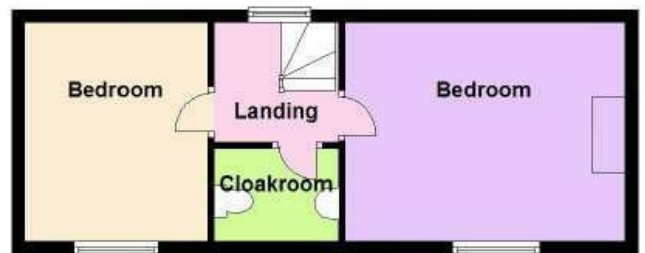
### First Floor

Approx. 36.5 sq. metres (392.8 sq. feet)



### Second Floor

Approx. 31.3 sq. metres (337.2 sq. feet)



Total area: approx. 160.7 sq. metres (1729.4 sq. feet)