

Jonathan Hunt

ESTATE AGENCY

20 High Street Ware SG12 9BX

Tel: 01920 411090

8 High Street Buntingford SG9 9AG

Tel: 01763 272727

info@jonathan-hunt.co.uk

www.jonathanhunt.co.uk



6 Cameron Court, Ware, Herts, SG12 9EU

£185,000

JONATHAN HUNT are pleased to offer this rarely available one double bedroom maisonette located just off Crib Street in Ware's town centre. Benefits include Kitchen, Bathroom, gas central heating and communal gardens - LEASEHOLD 125 YEARS FROM 1993 (94 years remaining) , SERVICE CHARGE £70 per month... CHAIN FREE

Buntingford Branch - Company No. 10303541 VAT No. 10303541

Ware Branch - Company No. 4759215 VAT No. 700174975

6 Cameron Court, Ware, Herts, SG12 9EU

ACCOMMODATION COMPRISES

ENTRANCE

LIVING ROOM 15'1" x 9'10" (4.6 x 3)



BEDROOM 11'8" x 8'10" (3.58 x 2.7)



PHOTO TWO



BATHROOM



KITCHEN 7'6" x 5'4" (2.3 x 1.64)



EXTERIOR



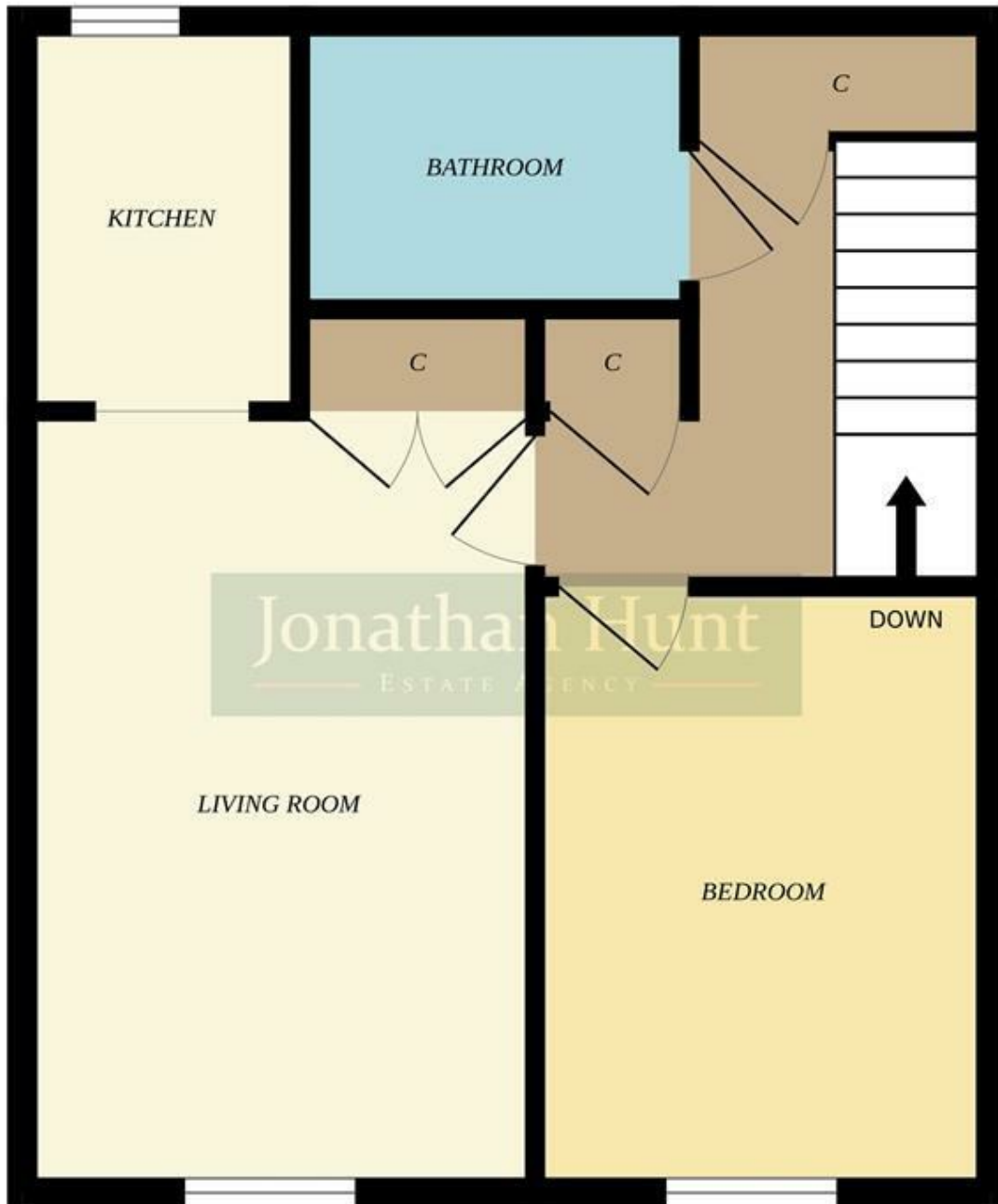
COUNCIL TAX BAND - B

6 Cameron Court, Ware, Herts, SG12 9EU



Energy Efficiency Rating	
	Potential
Very energy efficient - lower running costs	
(92 plus) A	
(81-91) B	
(69-80) C	
(55-68) D	
(39-54) E	
(21-38) F	
(1-20) G	
Not energy efficient - higher running costs	
Current: 65	Potential: 82
England & Wales	EU Directive 2002/91/EC

Environmental Impact (CO ₂) Rating	
	Potential
Very environmentally friendly - lower CO ₂ emissions	
(92 plus) A	
(81-91) B	
(69-80) C	
(55-68) D	
(39-54) E	
(21-38) F	
(1-20) G	
Not environmentally friendly - higher CO ₂ emissions	
Current: 59	Potential: 80
England & Wales	EU Directive 2002/91/EC



Whilst every attempt has been made to ensure the accuracy of the floorplan contained here, measurements of doors, windows, rooms and any other items are approximate and no responsibility is taken for any error, omission or mis-statement. This plan is for illustrative purposes only and should be used as such by any prospective purchaser. The services, systems and appliances shown have not been tested and no guarantee as to their operability or efficiency can be given.
Made with Metropix ©2024