

Jonathan Hunt

ESTATE AGENCY

20 High Street Ware SG12 9BX

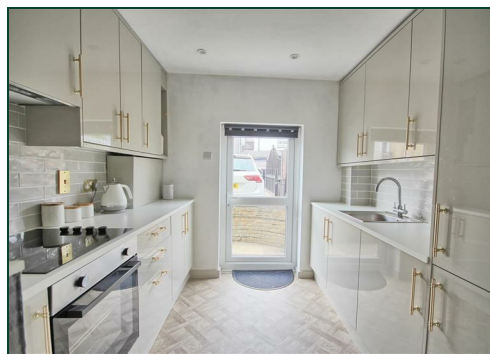
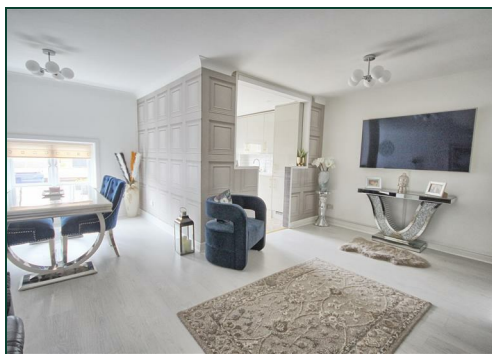
Tel: 01920 411090

8 High Street Buntingford SG9 9AG

Tel: 01763 272727

info@jonathan-hunt.co.uk

www.jonathanhunt.co.uk



1 Omega Maltings, Ware, SG12 7AB

£300,000

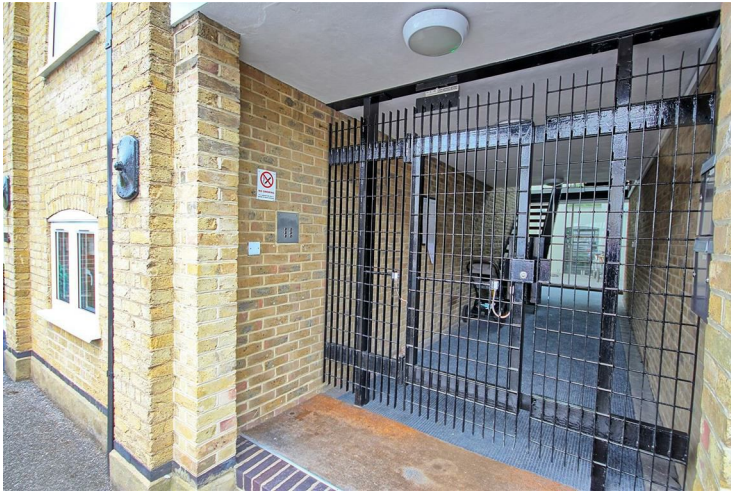
JONATHAN HUNT are pleased to offer this immaculate two bedroom GROUND FLOOR TOWN CENTRE APARTMENT. The property has been fully refurbished to an excellent standard to include a new Kitchen, Shower room and redecorated throughout. Omega Maltings is a gated riverside development positioned within easy access of local shops and train line to London. Viewing recommended.

Buntingford Branch - Company No. 10303541 VAT No. 10303541

Ware Branch - Company No. 4759215 VAT No. 700174975

1 Omega Maltings, Ware, SG12 7AB

SECURITY ENTRANCE



DINING AREA



ENTRANCE HALLWAY



KITCHEN



LIVING ROOM



BEDROOM ONE



1 Omega Maltings, Ware, SG12 7AB

BEDROOM TWO



SHOWER ROOM



Energy Efficiency Rating		Current	Potential
Very energy efficient - lower running costs			
(92 plus) A			
(81-91) B			
(69-80) C			
(55-68) D			
(39-54) E			
(21-38) F			
(1-20) G			
Not energy efficient - higher running costs			
England & Wales		EU Directive 2002/91/EC	

Environmental Impact (CO ₂) Rating		Current	Potential
Very environmentally friendly - lower CO ₂ emissions			
(92 plus) A			
(81-91) B			
(69-80) C			
(55-68) D			
(39-54) E			
(21-38) F			
(1-20) G			
Not environmentally friendly - higher CO ₂ emissions			
England & Wales		EU Directive 2002/91/EC	

ALLOCATED PARKING

RIVERSIDE DEVELOPMENT



GATED ENTRANCE

COUNCIL TAX BAND - C

GROUND FLOOR



Whilst every attempt has been made to ensure the accuracy of the floorplan contained here, measurements of doors, windows, rooms and any other items are approximate and no responsibility is taken for any error, omission or mis-statement. This plan is for illustrative purposes only and should be used as such by any prospective purchaser. The services, systems and appliances shown have not been tested and no guarantee as to their operability or efficiency can be given.
Made with Metropix ©2024