

Jonathan Hunt

ESTATE AGENCY

20 High Street Ware SG12 9BX

Tel: 01920 411090

8 High Street Buntingford SG9 9AG

Tel: 01763 272727

info@jonathan-hunt.co.uk

www.jonathanhunt.co.uk



16 Southall Close, Ware, Herts, SG12 7PE

£235,000

JONATHAN HUNT are pleased to offer this spacious two bedroom GROUND FLOOR apartment, benefiting from Upvc double glazing, gas central heating, kitchen, bathroom and residents parking. CHAIN FREE

Buntingford Branch - Company No. 10303541 VAT No. 10303541

Ware Branch - Company No. 4759215 VAT No. 700174975

16 Southall Close, Ware, Herts, SG12 7PE

ENTRANCE HALL

KITCHEN



BEDROOM TWO



LIVING ROOM



BATHROOM

COUNCIL TAX BAND - B



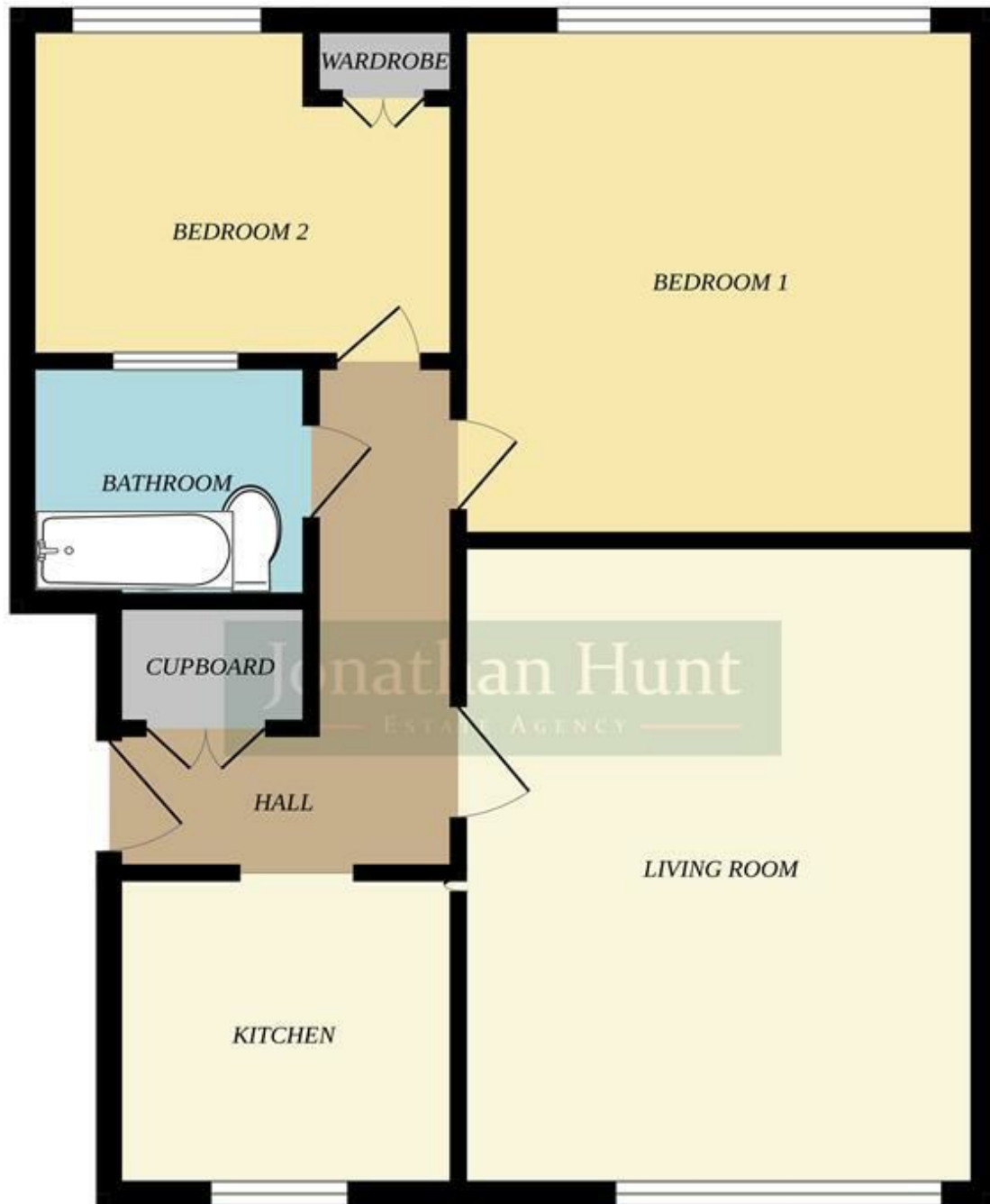
BEDROOM ONE



Energy Efficiency Rating		Current	Potential
Very energy efficient - lower running costs			
(92 plus) A			
(81-91) B			
(69-80) C			
(55-68) D			
(39-54) E			
(21-38) F			
(1-20) G			
Not energy efficient - higher running costs			
England & Wales		EU Directive 2002/91/EC	

Environmental Impact (CO ₂) Rating		Current	Potential
Very environmentally friendly - lower CO ₂ emissions			
(92 plus) A			
(81-91) B			
(69-80) C			
(55-68) D			
(39-54) E			
(21-38) F			
(1-20) G			
Not environmentally friendly - higher CO ₂ emissions			
England & Wales		EU Directive 2002/91/EC	

GROUND FLOOR



SOUTHALL CLOSE

Whilst every attempt has been made to ensure the accuracy of the floorplan contained here, measurements of doors, windows, rooms and any other items are approximate and no responsibility is taken for any error, omission or mis-statement. This plan is for illustrative purposes only and should be used as such by any prospective purchaser. The services, systems and appliances shown have not been tested and no guarantee as to their operability or efficiency can be given.
Made with Metropix ©2024