

Jonathan Hunt

ESTATE AGENCY

20 High Street Ware SG12 9BX

Tel: 01920 411090

8 High Street Buntingford SG9 9AG

Tel: 01763 272727

info@jonathan-hunt.co.uk

www.jonathanhunt.co.uk



Aura Westmill, SG9 9LA

£1,500,000

Aura: Exclusive 3-Acre Hilltop Retreat in Westmill

Aura Westmill, SG9 9LA

Discover 'Aura': A majestic 3-acre hilltop estate featuring a versatile chalet bungalow with ample living and storage space, and ready-to-implement plans for a grand architectural estate. Experience the grand design through our immersive virtual video tour.

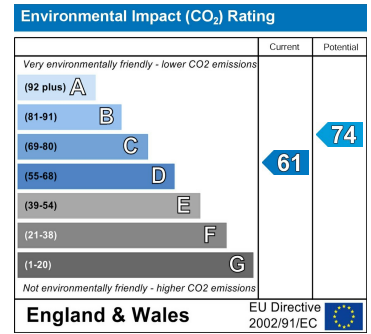
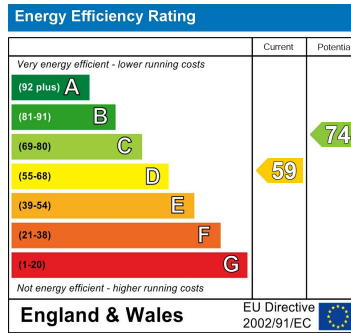
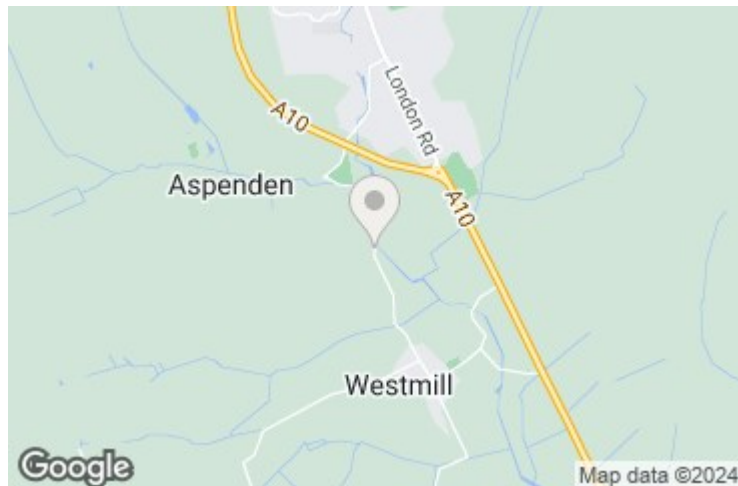
Introducing 'Aura' — a distinctive estate nestled between the charming villages of Westmill and Aspenden. Situated on a scenic hill, this 3-acre property offers privacy, expansive views, and boundless potential for creating a grand residence or an elegant family home.

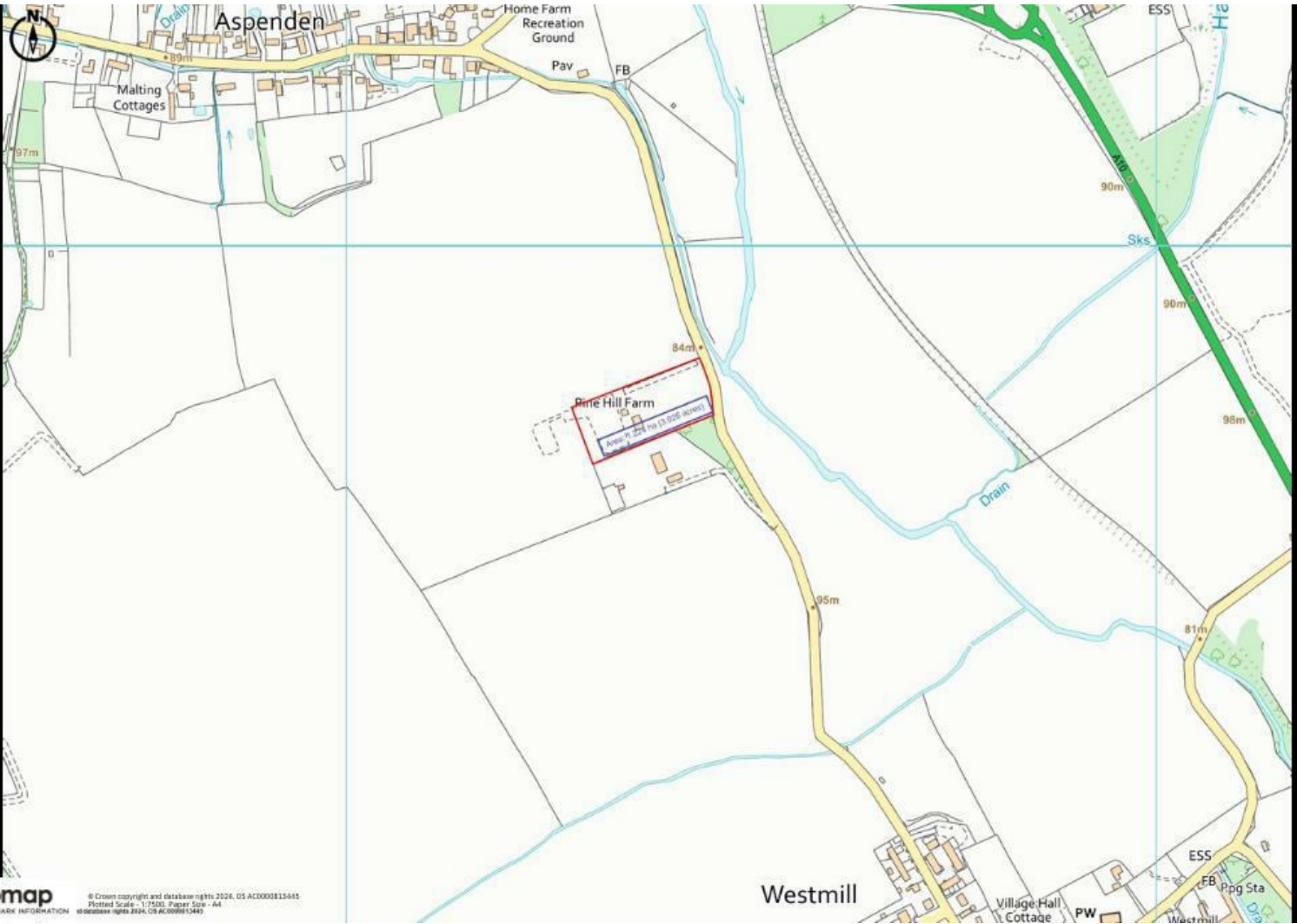
At the heart of 'Aura' is a substantial chalet bungalow, offering 3,000 sq ft of living space complemented by a 527.4 sq ft garage, ready for immediate occupancy. This home serves as a perfect canvas for your personal touch, providing ample scope for custom enhancements. It's an ideal residence during the construction of your dream estate or as a long-term home tailored to your preferences.

Included with the property is full planning permission for a state-of-the-art 13,842.9 sq ft residence, meticulously designed to integrate modern luxury with functional elegance. This approval not only ensures a seamless construction process but also sets a precedent for future planning permissions, reinforcing the potential for expansive development. Detailed architectural and structural engineers' drawings are provided, ready to begin at your convenience. The design features substantial underground parking and vast living spaces set to redefine sophisticated country living.

Strategically located, 'Aura' provides unparalleled access to premier educational institutions such as Haileybury, St Edmunds, and Stortford College, all within a 20-minute drive. Its proximity to Stansted Airport ensures easy international connectivity, making it a globally connected haven.

'Aura' is more than just a home; it's a lifestyle choice offering tranquility, beauty, and practicality in a unique package. Whether you choose to proceed with the ambitious existing plans or customise the existing structure, 'Aura' is poised to fulfil your highest aspirations, transforming into a remarkable home or grand estate that resonates with your deepest desires and dreams. Step into the future of 'Aura' by exploring the immersive walkthrough video of the grand design featured in our video tour section.





Promap
 © Crown copyright and database rights 2024. OS AC000013441
 Plotted Scale - 1:7500. Paper Size - A4
 OS Licence rights 2024. OS AC000013445