



Flat 16 Homeridge House, Longridge Avenue, Saltdean, BN2 8RQ  
£115,000

**CarruthersandLuck**  
SalesandLettings





## Flat 16 Homeridge House

Longridge Avenue, Saltdean

**Entrance Hallway** Security entry system, doors leading to living room and bedroom, storage cupboard.

**Living Room 16' 5" x 10' 8" (5.00m x 3.24m)**

Window to front with views out to sea, night storage heater, power points.

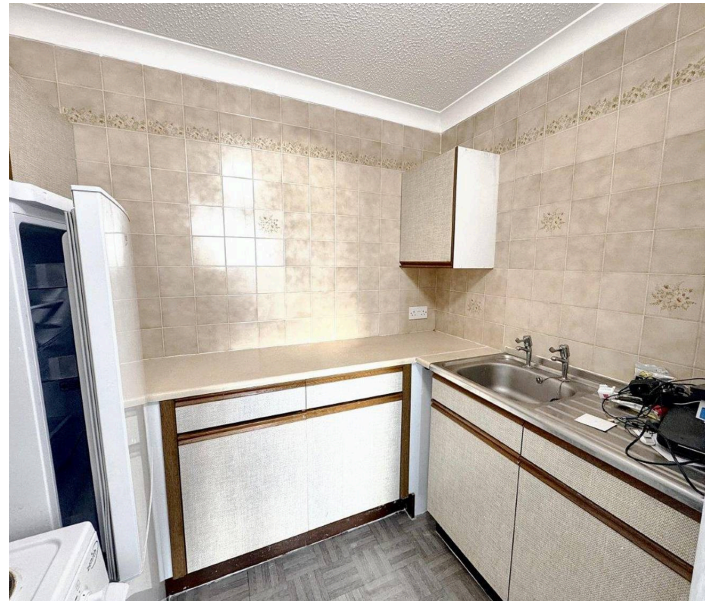
**Kitchen 7' 4" x 4' 9" (2.24m x 1.46m)** Fitted kitchen comprising, cupboard and drawer base units with rolled edge work surfaces over and inset single drainer stainless steel sink with hot and cold mixer tap, matching wall mounted units, space for electric cooker, space for fridge/freezer, tiled splash back, power points.

**Bedroom 14' 2" x 8' 6" (4.33m x 2.60m)**

Window to front with views out to sea, night storage heater, power points.

**Bathroom 7' 5' 3" (2.13m x 1.60m)** Coloured suite comprising low level W.C, wash hand basin inset into vanity units, panelled low level bath with shower attachment, tiled walls, wall mounted mirror, extractor fan.

**Carruthers & Luck Estate Agents cannot guarantee the accuracy of these details as we have been asked to act on a sub-agent basis.**



**CarruthersandLuck**  
SalesandLettings





# Carruthers and Luck Sales and Lettings

233A South Coast Road, Peacehaven – BN10 8LD

01273 585001

[sales@carruthersandluck.co.uk](mailto:sales@carruthersandluck.co.uk)

[www.carruthersandluck.co.uk](http://www.carruthersandluck.co.uk)



Follow us on Instagram  
[@carruthersandluck](https://www.instagram.com/carruthersandluck)



Find us on Facebook  
Carruthers Luck

These particulars are prepared diligently and all reasonable steps are taken to ensure their accuracy. Neither the company or a seller will however be under any liability to any purchaser or prospective purchaser in respect of them. The description, Dimensions and all other information is believed to be correct, but their accuracy is no way guaranteed. The services have not been tested. Any floor plans shown are for identification purposes only and are not to scale Directors: Paul Carruthers Stephen Luck



**CarruthersandLuck**  
SalesandLettings