



Flat 8 Ravenscroft, 310 South Coast Road, Peacehaven, BN10 7EJ

£170,000

CarruthersandLuck  
SalesandLettings



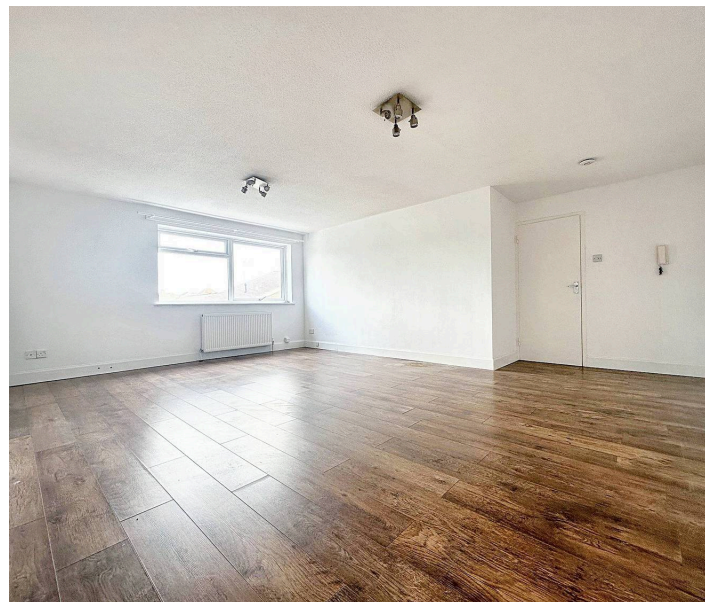
## Flat 8 Ravenscroft

South Coast Road, Peacehaven

This spacious 1 bedroom first floor purpose built flat is located opposite Peace Park with its access to the under cliff walks, situated close to local shops, bus services to Brighton & Eastbourne.

The property comprises of a good size lounge/dining room, double bedroom, kitchen with modern units, bathroom/wc which is fitted with a white suite, entrance hall and inner hall both with good size storage cupboards. Benefits include gas central heating, double glazing, garage, parking space, new lease and no onward chain.

- Close to local shops
- New lease



# Flat 8 Ravenscroft

South Coast Road, Peacehaven

ENTRANCE HALL

LOUNGE DINING ROOM 19'4" max x 16'8" max (5.89m x 5.08m)

KITCHEN 9'0" x 6'5" (2.74m x 1.98m)

BEDROOM 12'3" x 9'3" (3.73m x 2.81m)

BATHROOM/WC 6'5" x 6' max (1.98m x 1.83m)

OUTSIDE

PARKING SPACE

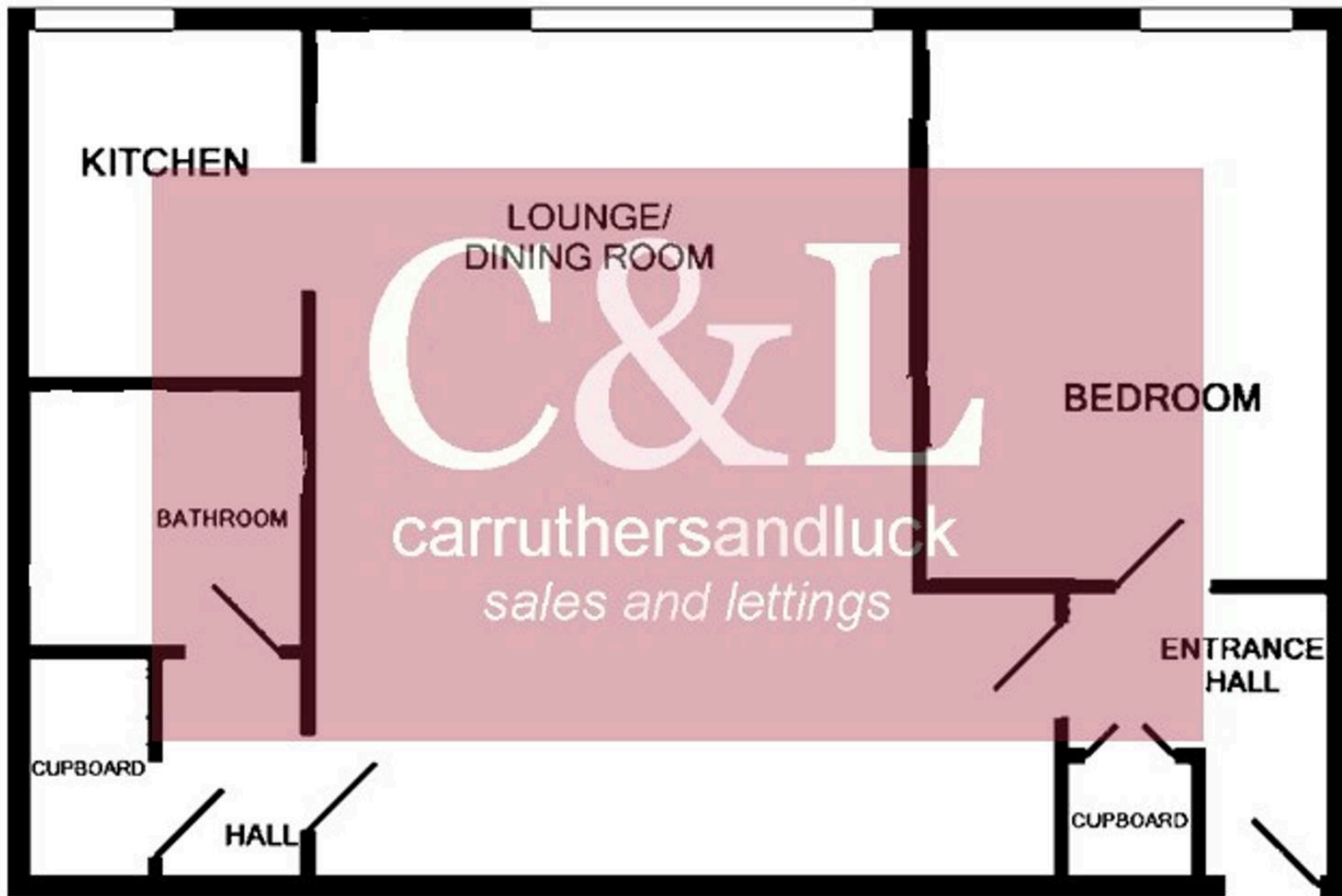
GARAGE

Council Tax band: E

Tenure: Leasehold

EPC Energy Efficiency Rating: C





## Carruthers and Luck Sales and Lettings

233A South Coast Road, Peacehaven – BN10 8LD

01273 585001

[sales@carruthersandluck.co.uk](mailto:sales@carruthersandluck.co.uk)

[www.carruthersandluck.co.uk](http://www.carruthersandluck.co.uk)



Follow us on Instagram  
@carruthersandluck



Find us on Facebook  
Carruthers Luck

These particulars are prepared diligently and all reasonable steps are taken to ensure their accuracy. Neither the company or a seller will however be under any liability to any purchaser or prospective purchaser in respect of them. The description, Dimensions and all other information is believed to be correct, but their accuracy is no way guaranteed. The services have not been tested. Any floor plans shown are for identification purposes only and are not to scale Directors: Paul Carruthers Stephen Luck



**CarruthersandLuck**  
SalesandLettings