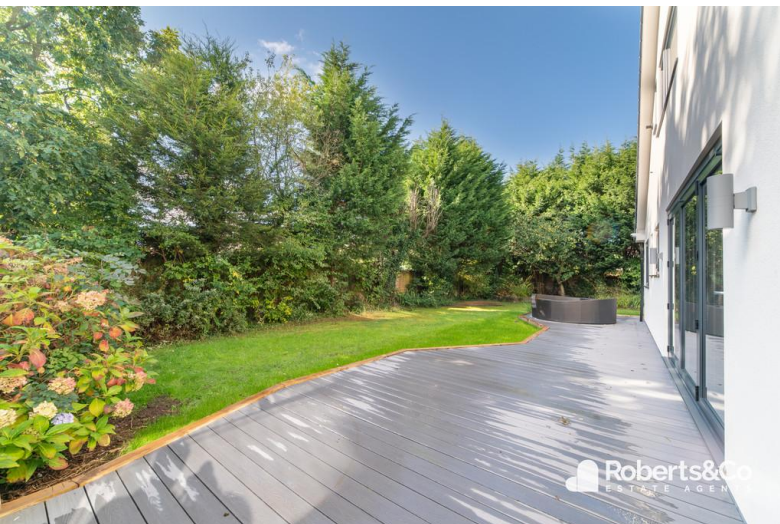




Danesway
Walton Le Dale

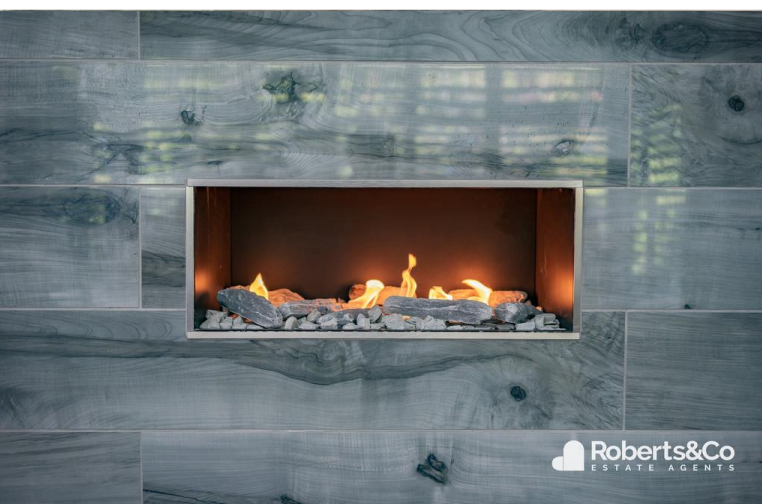
- Secluded Detached 4 Bedroom Family Home
- Fully Renovated To a High Standard
- 4 Double Bedrooms
- Modern Fitted Kitchen & Bathroom

For Sale £480,000 (Offers Over)
EPC Rating 'D'





Roberts & Co
ESTATE AGENTS



Roberts & Co
ESTATE AGENTS

Property Description

Longing for space, style and sophistication? Behind this modern exterior, you'll discover a gorgeous family home in Walton Le Dale, designed with modern living in mind.

Tastefully redesigned throughout, this substantial abode has been thoughtfully extended to offer four generous bedrooms, spacious living accommodation and a modern fitted breakfast kitchen. Parking is a breeze at the front, with ample space on the large, gated driveway and there's an impressively large, private garden to the rear.

Step inside into the wonderfully large entrance hall. We love the breakfast kitchen. The open plan design lends itself beautifully to family life. Gather round the breakfast bar or enjoy sitting at the table and enjoy a bite to eat together whilst catching up on the day. Bi-fold doors allow the light and airy space to be completely opened up to the garden, whilst natural daylight floods in further from the two large windows. The spacious lounge has a feature living flame remote controlled gas fire in chimney breast, a spectacular bay frontage, which floods this elegant space with



Roberts & Co
ESTATE AGENTS



natural light, so kick off your shoes and relax. With four double bedrooms, there's plenty of space for everyone.

There are two bedrooms and WC to the first floor and two bedrooms and family bathroom on the ground floor.

The garden is secluded yet spacious, it offers various options for sitting and enjoying the tree backdrop.

Whether you love nothing more than to escape to a quiet corner with a good book, or throw the BBQ of all BBQs, it's all here for you.

There are two detached garages, perfect for storing away extra items. This extraordinary home is an absolute must view!



LOCAL INFORMATION

WALTON LE DALE is a large village in the borough of South Ribble, in Lancashire. It lies on the south bank of the River Ribble, opposite the city of Preston. Catering for all buyers, it boasts reputable schools, transport links and motorway networks for those who want amenities with the Capitol Centre retail park right on your doorstep. The Walton-le-Dale loop provides scenic walking along the Old Tram Road and River Darwen whilst the Guild Wheel and Brockholes Nature Reserve are just a short distance away.

ENTRANCE HALL

* Rock door * UPVC double glazed window * Poly flooring * Meter cupboards * Ceiling light * Central heating radiator * Wall lights * Stairs to first floor * Under stairs storage *



LOUNGE

21' 1" x 9' 1" (6.43m x 2.77m) * UPVC double glazed bay window * UPVC double glazed window to side * Ceiling light * Polyflor flooring * Central heating radiator * Feature living flame gas fire * Open to dining room *

DINING ROOM

* 2 UPVC double glazed windows * Ceiling light * Polyflor flooring * Central heating radiator *



BREAKFAST KITCHEN

* Bi fold doors opening onto garden * Polyflor flooring * Range of base and floor units with quartz worktops * Breakfast bar * Integrated fridge * Integrated freezer * Integrated dishwasher * Ceiling light * Ceiling spot lights * Hot tap * Extractor * Integrated Neff combination microwave oven * Integrated induction hob * Integrated electric oven * Integrated washing machine * Stainless steel sink with boiling water tap *



BEDROOM THREE

7' 11" x 14' 11" (2.41m x 4.55m) * UPVC double glazed window * Ceiling light * Polyflor flooring * Central heating radiator * Built in storage cupboard *

BEDROOM FOUR

11' 6" x 11' 0" (3.51m x 3.35m) * UPVC double glazed window * Ceiling light * Polyflor flooring * Central heating radiator * TV point *

BATHROOM

7' 11" x 8' 9" (2.41m x 2.67m) * 2 UPVC double glazed windows * Wash hand basin with oak vanity unit * Fully tiled walls * Ceiling spots * Central heating radiator * Polyflor flooring * Bath with free standing tap and shower attachment * WC * Walk in shower *



LANDING

* UPVC double glazed window * Oak and glass staircase * Ceiling light * Carpet flooring * Central heating radiator * Cupboard housing the boiler *

BEDROOM ONE

16' 5" x 14' 10" (5m x 4.52m) * UPVC double glazed window * Wall lights * Carpet flooring * Central heating radiator * Range of bedroom furniture *

BEDROOM TWO

14' 3" x 9' 0" (4.34m x 2.74m) * UPVC double glazed window * Wall lights * Carpet flooring * Central heating radiator * TV point * Loft access *



WC

* UPVC double glazed window * Ceiling light * Wood effect flooring * Fully tiled walls * Wash hand basin vanity unit * WC *

We are informed this property is Council Tax Band F For further information please check the Government Website

Whilst we believe the data within these statements to be accurate, any person(s) intending to place an offer and/or purchase the property should satisfy themselves by inspection in person or by a third party as to the validity and accuracy.

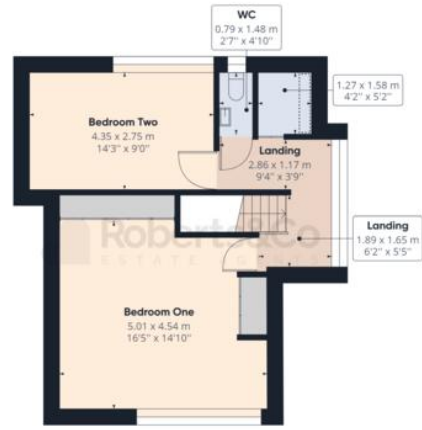
Please call 01772 977100 to arrange a viewing on this property now. Our office hours are 9am-5pm Monday to Friday and 9am-4pm Saturday.







Ground Floor Building 1



Floor 1 Building 1



Ground Floor Building 2



Ground Floor Building 3

Approximate total area⁽¹⁾

180.19 m²
1939.60 ft²

Reduced headroom

0.91 m²
9.82 ft²

(1) Excluding balconies and terraces

Reduced headroom (below 1.5m/4.92ft)

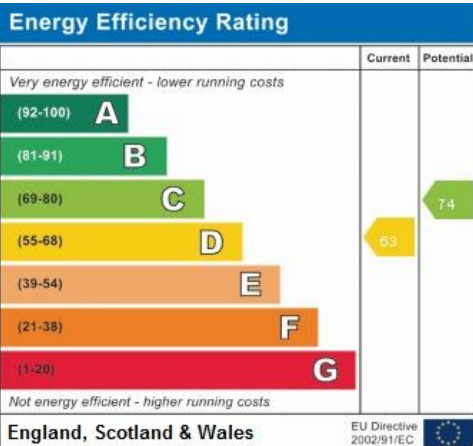
While every attempt has been made to ensure accuracy, all measurements are approximate, not to scale. This floor plan is for illustrative purposes only.

GIRAFFE360

rightmove

Zoopla
zoopla.co.uk

onTheMarket.com



Like and recommend us on



facebook

<https://www.facebook.com/RobertsCoSalesandLettings>

50 Watkin Lane
Lostock Hall
Preston
Lancashire
PR5 5RD

www.roberts-estates.co.uk
lostockhall@roberts-estates.co.uk
01772 977 100

Agents Note: Whilst every care has been taken to prepare these sales particulars, they are for guidance purposes only. All measurements are approximate and for general guidance purposes only and whilst every care has been taken to ensure their accuracy, they should not be relied upon and potential buyers are advised to recheck the measurements