



Batchelor Street, N1

£750,000

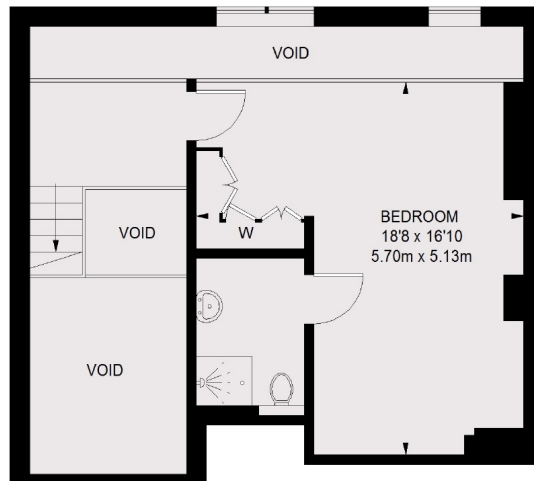
A two bedroom school conversion in the heart of Angel. This split level flat has lift access, double height windows, share of freehold and is set in a secure gated development with a well kept communal garden.

Batchelor Street is approximately 300 meters from Angel tube station, there are fantastic shops, bars and restaurants along Camden Passage, Chapel Market and Upper Street which also offers a diverse selection of high street and boutique stores.

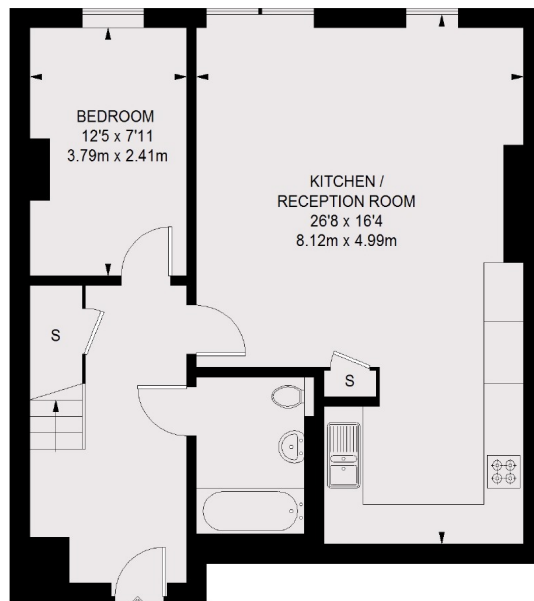
Features

- School Conversion
- Share of Freehold
- Lift Access
- Two Bedroom
- Two Bathroom
- Chain Free
- Communal Garden

Batchelor Street, London, N1



MEZZANINE



FIRST FLOOR

TOTAL APPROX. FLOOR AREA
(EXCLUDING VOID)
1015 SQ. FT. (94.32 SQ. M.)

Contact

To arrange a viewing call our office on the number below or visit our website.



Energy Rating: C. We aim to make our particulars both accurate and reliable. However they are not guaranteed; nor do they form part of an offer or contract. If you require clarification on any points then please contact us, especially if you're traveling some distance to view. Please note that appliances and heating systems have not been tested and therefore no warranties can be given as to their good working order.