



## Kynaston Road, N16

£1,699,999

A Victorian freehold in one of the most sought-after neighbourhoods in Stoke Newington. With almost 1,800sqft of living space, this home benefits from five bedrooms, two bathrooms, separate media room and a private garden.

Located on a tree lined street, with easy access to the vibrant shops and cafés along Stoke Newington's Church Street. Excellent transport links include Stoke Newington Overground, as well as numerous bus routes into the City, the West End and beyond. The lush green spaces of Clissold Park are just a short walk away.

### Features

Victorian House  
Five Bedrooms  
Two Bathrooms  
Separate WC  
Garden





## Kynaston Road, N16

The double reception room on the ground floor leads through to a stylish eat-in kitchen with integrated appliances. Bi-fold doors take you out to a private decked garden, with plenty of space to BBQ and entertain. There are also stairs down from this floor to an impressive media room.

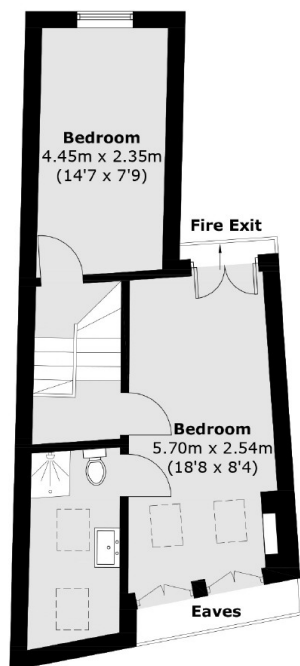
On the lead up to the first floor, there is the first of five bedrooms, currently used as an office, as well as a family bathroom. There are two further bedrooms up the next half flight of stairs, with the primary bedroom spanning the width of the building with double sash windows.

The next half level has another double bedroom, and the top floor has the final bedroom with en-suite shower room and Juliette balcony. There is also access to substantial eves storage from this floor.

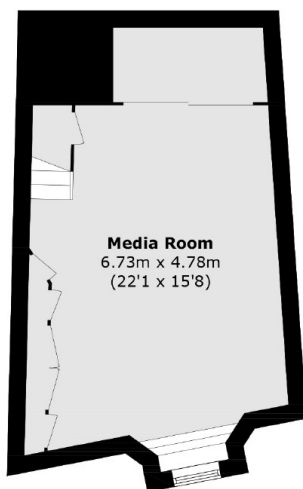




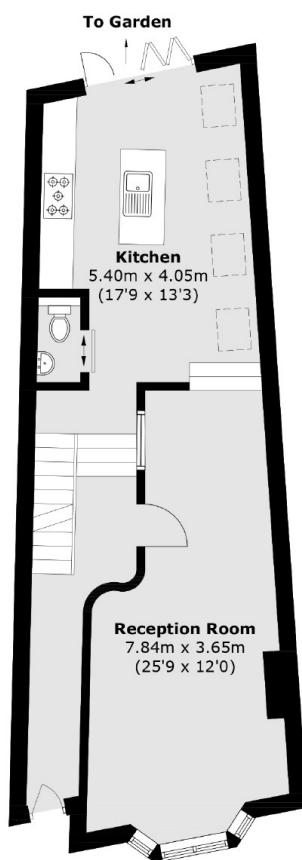
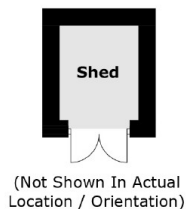
# Kynaston Road, London, N16



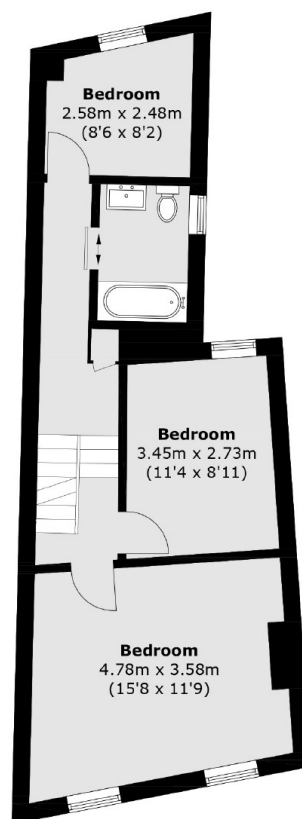
**Second Floor**



**Lower Ground Floor**



**Ground Floor**



**First Floor**

Total area (approx.): 167.1 sq. m (1,798.7 sq. ft)  
Shed: 2.5 sq. m (26.9 sq. ft)  
(Excluding Eaves)