



Gifford Street, N1

£415 Per week

A spacious one bedroom third floor apartment in a purpose built block close to Kings Cross. This modern flat has a private balcony, communal gym with steam room and sauna, plus access to a courtyard communal garden.

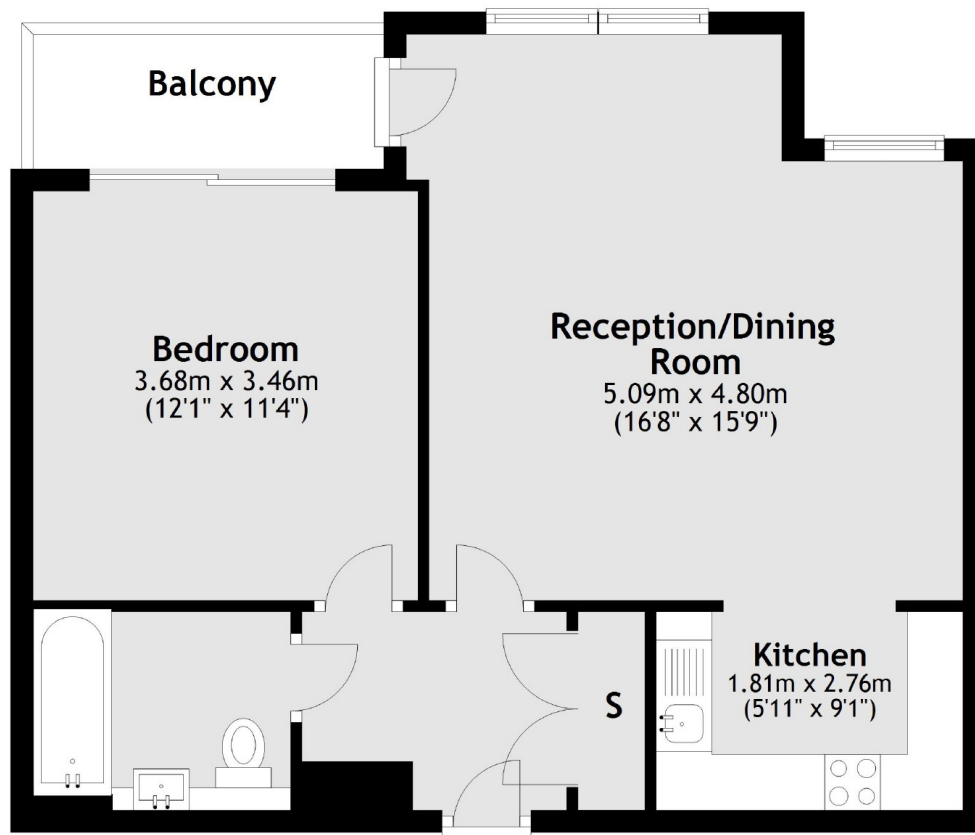
Just over half a mile to Kings Cross for bars and restaurants, multiple Underground lines, National Rail or the Eurostar connection. The flat is also a short walk from Angel and the shops of popular Upper Street.

Features

- One Bedroom
- Third Floor
- Private Balcony
- Communal Gardens
- Residents Gym, Steam & Sauna
- 24 Hour Concierge

Gifford Street,
London, N1

Third Floor



Total area: approx. 51.7 sq. metres (556.6 sq. feet)

Contact

To arrange a viewing call our office on the number below or visit our website.



Energy Rating: . We aim to make our particulars both accurate and reliable. However they are not guaranteed; nor do they form part of an offer or contract. If you require clarification on any points then please contact us, especially if you're traveling some distance to view. Please note that appliances and heating systems have not been tested and therefore no warranties can be given as to their good working order.