



## Drayton Park, N5

£670,000

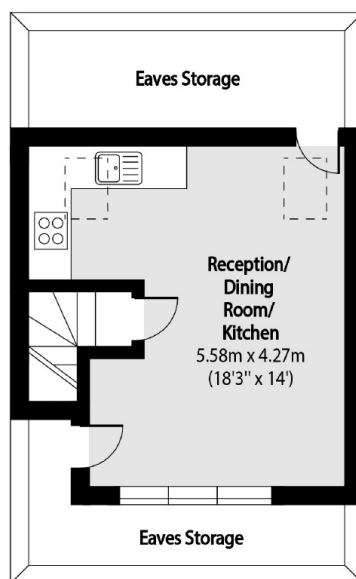
A three bedroom, two bathroom home split across the top two floors of a Victorian conversion. The top floor occupies the open plan kitchen/living rooms, with all three bedrooms on the floor below. The principal bedroom benefits from fitted storage and an ensuite bathroom.

With Arsenal tube station (Piccadilly Line) at one end of the road, and Drayton Park (Overground) station is at the other, this flat has excellent links into both The City and the West End. The ever popular Highbury Fields is within easy reach for green space and Highbury Barn is also close by.

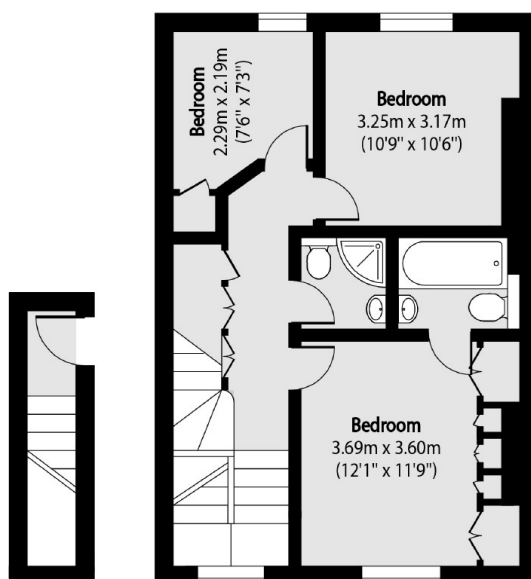
### Features

- Three Bedrooms
- Two Bathrooms
- Top Floors
- Victorian Conversion
- Open Plan Living

# Drayton Park, London, N5



Third Floor



First Floor

Third Floor

Total area (approx): 81.28 sq m (875 sq. ft)

Eaves Storage total area (approx): 14.50 sq m (156 sq. ft)

## Dexters

Islington  
76 Upper Street  
London  
N1 0NU  
Sales  
020 7483 6373

Energy Rating: D. We aim to make our particulars both accurate and reliable. However they are not guaranteed; nor do they form part of an offer or contract. If you require clarification on any points then please contact us, especially if you're traveling some distance to view. Please note that appliances and heating systems have not been tested and therefore no warranties can be given as to their good working order.

 **RICS** | Regulated  
Estate Agent  
and Letting Agent

[dexters.co.uk](https://www.dexters.co.uk)