



## Greenman Street, N1

### £799,000

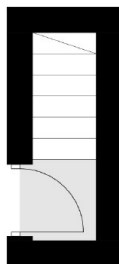
A top floor period conversion in the heart of sought after Islington. The apartment offers almost 1000sqft of internal living space split over two floors. There is a large reception room, two bedrooms and a separate kitchen. This lovely home also has a Share of Freehold.

Greenman street is tucked nicely off Essex Road in Islington. On the doorstep of boutique bakeries like Sour Dough Sophia and Raabs and just 0.5 miles to Angel Station or 1 mile to Highbury and Islington.

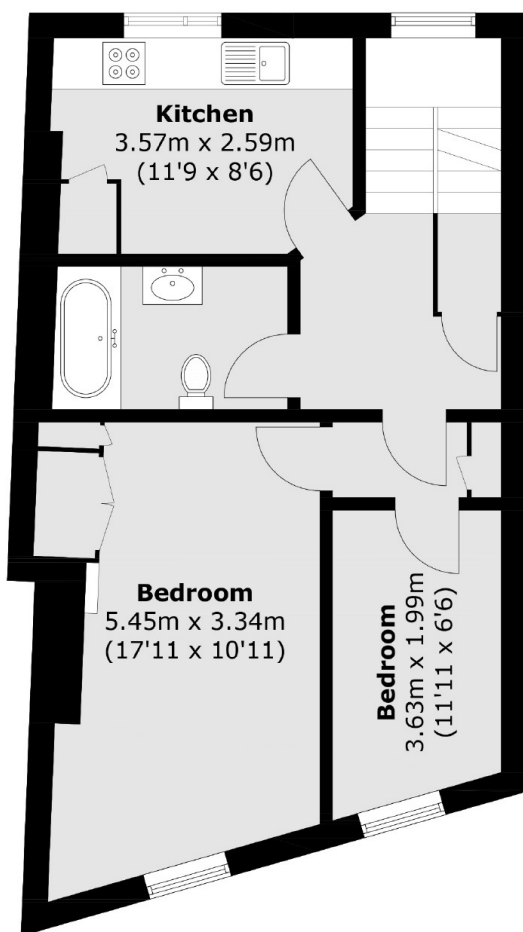
### Features

- Top Floor Flat
- Period Conversion
- Large Reception
- Separate Kitchen
- Chain Free
- Share of Freehold

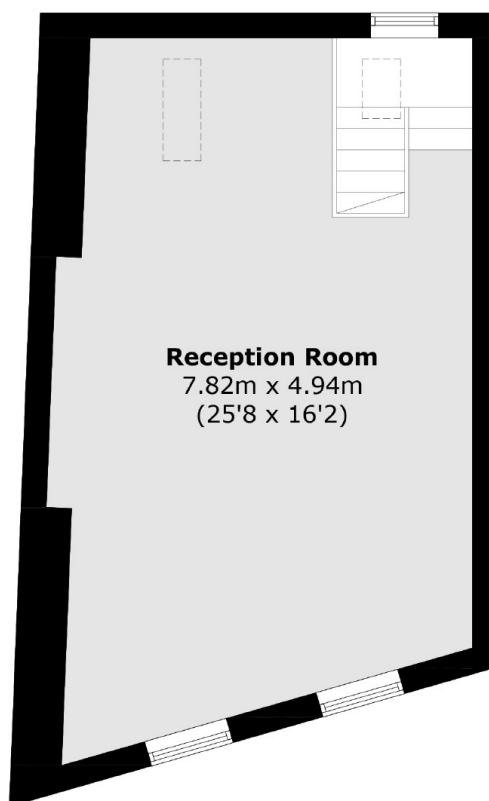
# Greenman Street, London, N1



**First Floor**



**Second Floor**



**Third Floor**

Total area (approx.): 92.0 sq. m (990.3 sq. ft)