



Petherton Road, N5

£8,000 Per week

Dexters



Petherton Road, N5

A well presented four storey terraced house with five double bedrooms located in the sought after area of Highbury. Which has been modernised throughout whilst retaining its original features. This property also conveniently has an abundance of character and a private garden.

Ideally located between Clissold park and Canonbury just off the leafy Petherton Road. Under half a mile from Canonbury station providing easy access to easy access to Victoria Line and Overground, plus Newington Green for buses to the City and West End.

Features

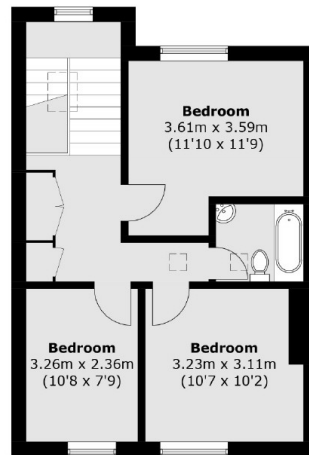
- Five Double Bedrooms
- Five Floors
- Private Garden
- Semi Detached House
- Amazing Location



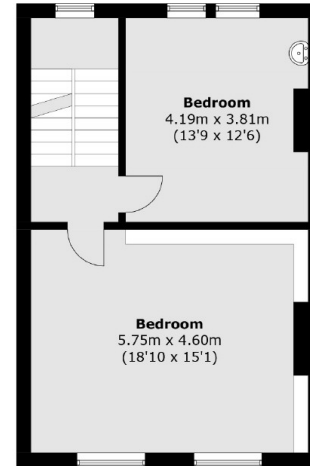




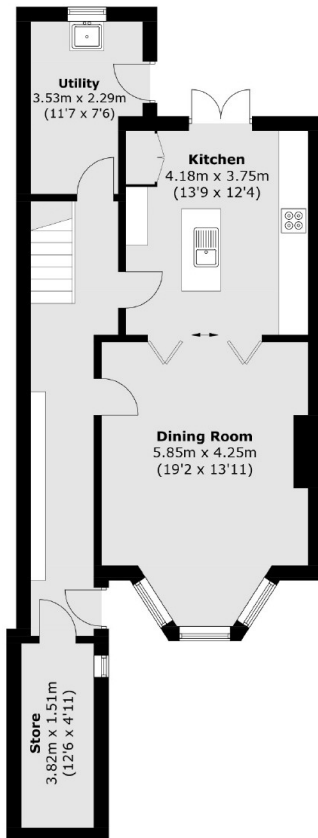
Petherton Road, London, N5



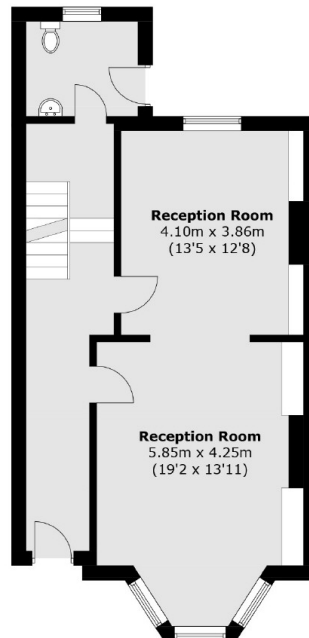
Third Floor



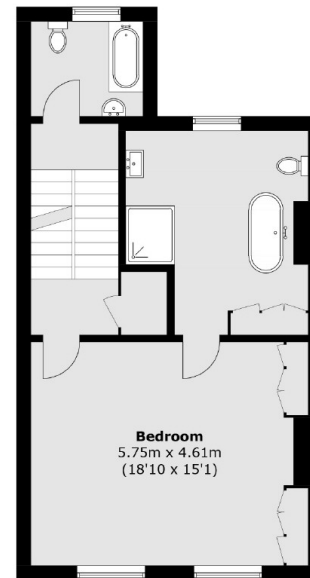
Second Floor



Lower Ground Floor



Ground Floor



First Floor

Total area (approx.): 278.7 sq. m (2,999.9 sq. ft)