



## Highbury Stadium Square, N5

£340 Per week

A modern one bedroom apartment on the fourth floor of the sought after Highbury Stadium Square development. Open plan living room and a large double bedroom makes this the perfect flat for professional tenants.

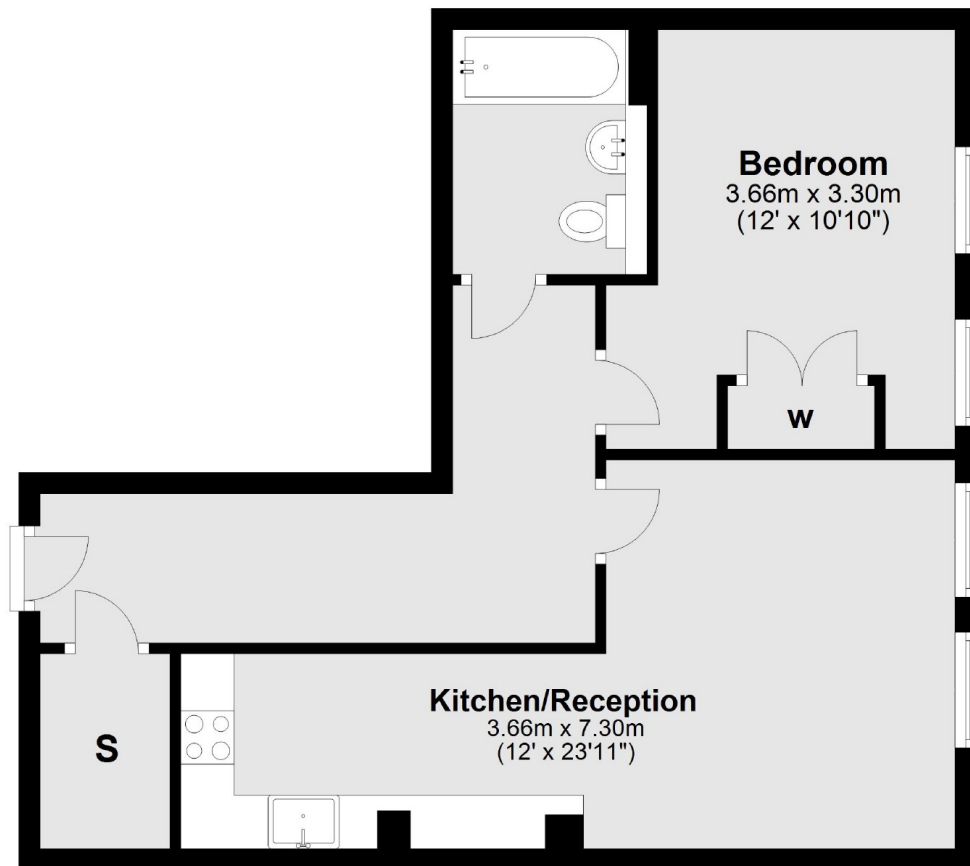
This property is 0.1 miles to Arsenal station on the Piccadilly line. The great Northern line station of Drayton park is 0.3 miles away. This development is well served by the many shops and restaurants of Highbury Barn only a short walk away.

### Features

- One Bedroom
- New Build Development
- Communal Gardens
- 24 Hour Concierge
- Wooden Flooring
- Open Plan Living

## Highbury Stadium Square, London, N5

### Fourth Floor



Total area: approx. 49.0 sq. metres (527.5 sq. feet)

### Contact

To arrange a viewing call our office on the number below or visit our website.



Energy Rating: C. We aim to make our particulars both accurate and reliable. However they are not guaranteed; nor do they form part of an offer or contract. If you require clarification on any points then please contact us, especially if you're traveling some distance to view. Please note that appliances and heating systems have not been tested and therefore no warranties can be given as to their good working order.