



## De Beauvoir Crescent, N1 £700,000

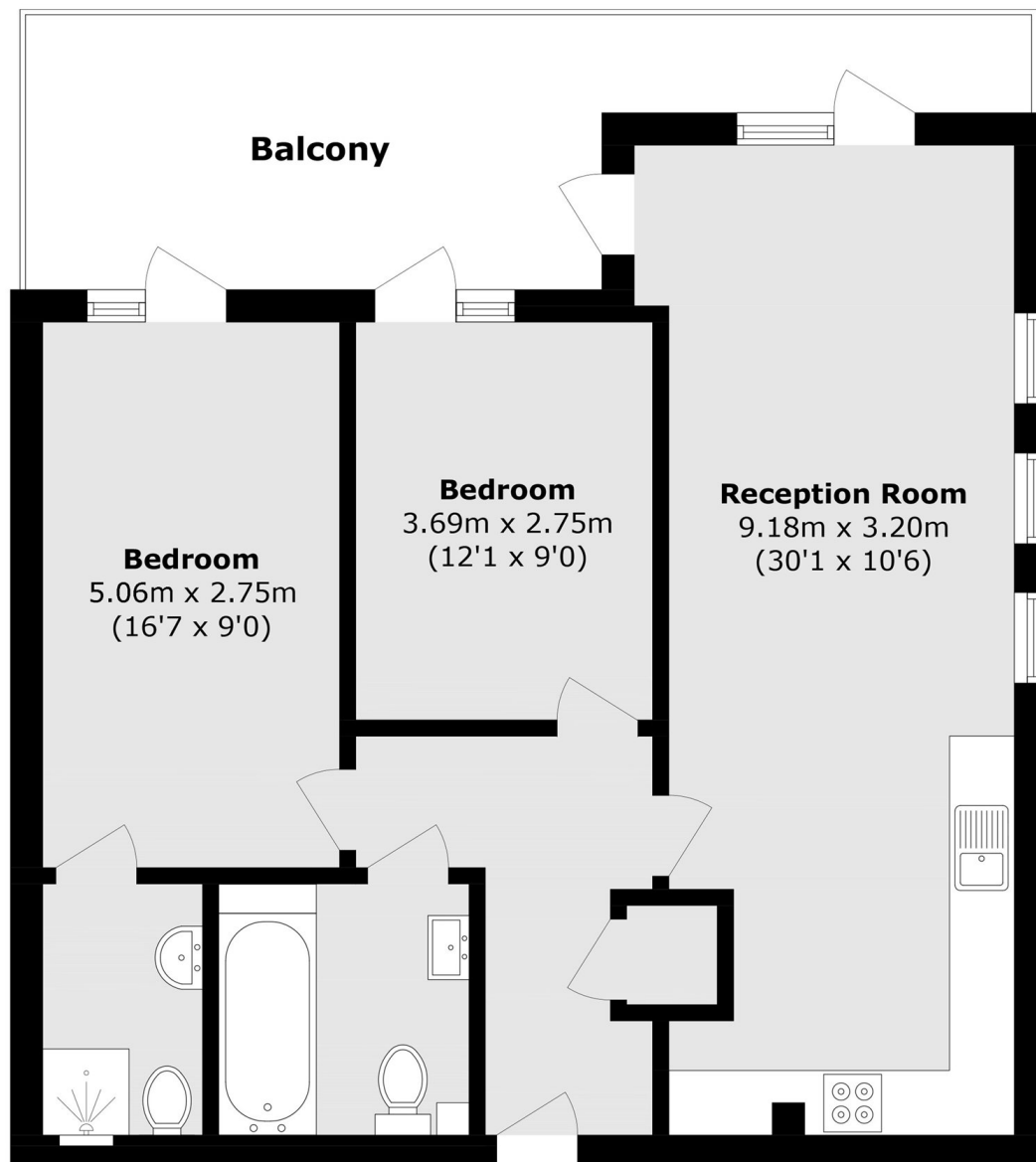
A two double bedroom, two bathroom lateral property set on the first floor of Grand Canal Apartments. This flat benefits from an open plan kitchen and living space plus a large private terrace with access from every room.

Located in De Beauvoir Town with Haggerston Station 0.3 miles away plus several bus routes on Kingsland Road and Southgate Road offer direct access into the City of London. The green spaces of Shoreditch Park, De Beauvoir Square and Rosemary Gardens are also within easy reach.

### Features

- Open Plan Living
- Private Terrace
- Modern Fittings Throughout
- Wooden Floors
- Canal Access
- Underfloor Heating

# De Beauvoir Crescent, London, N1



Total area (approx.): 73.6 sq. m (792.2 sq. ft)  
Balcony area (approx.): 17.8 sq. m (191.5 sq. ft)