



Essex Road, N1

£400,000

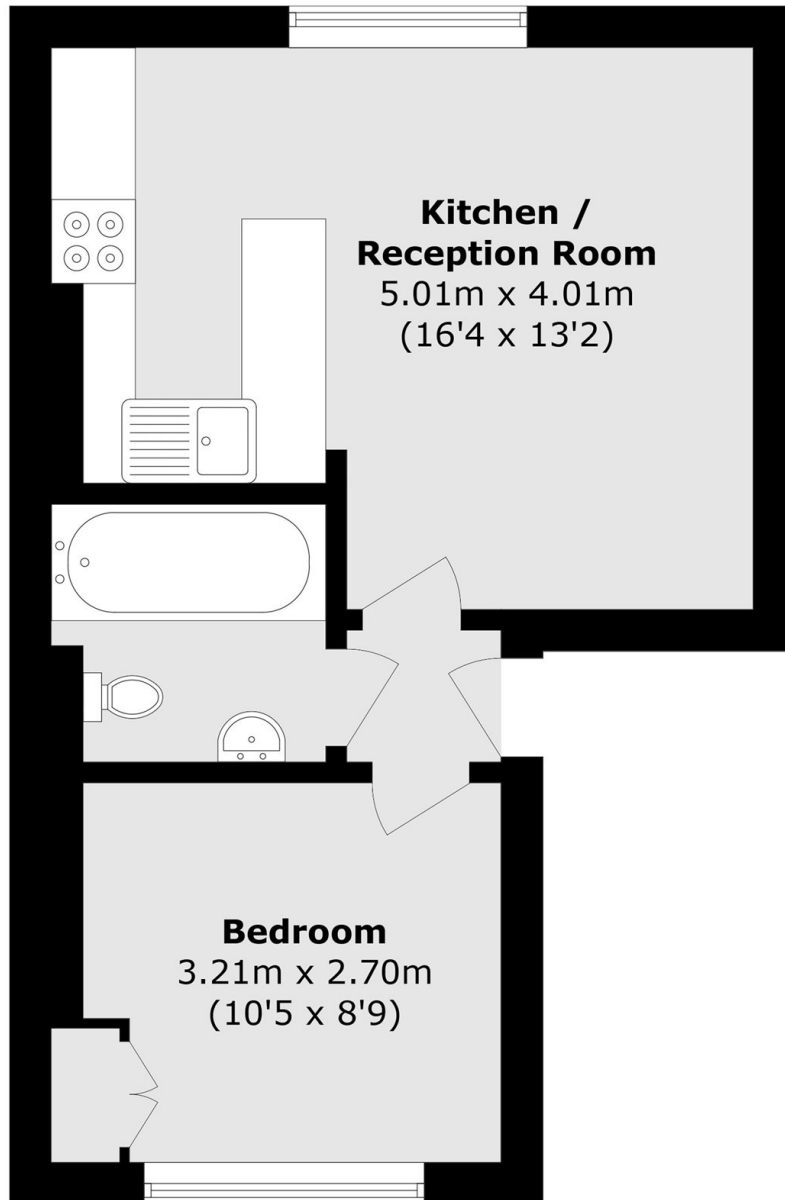
A one bedroom flat set on the second floor of a period conversion. Large windows allow for an abundance of natural light the open plan layout maximises the use of the space available.

Angel (Northern Line), Essex Road (National Rail) and Highbury & Islington (Victoria Line & Overground) Stations are all under a mile away, whilst the numerous bus routes down Essex Road take you directly into the City of London. Additionally, the shops, bars and restaurants of Islington's Upper Street are within easy reach.

Features

- One Bedroom
- Prime Location
- Open Plan
- Period Conversion
- Second Floor

Essex Road, London, N1



Total area (approx.): 32.8 sq. m (353.1 sq. ft)