

Crowline Walk, N1

£650,000

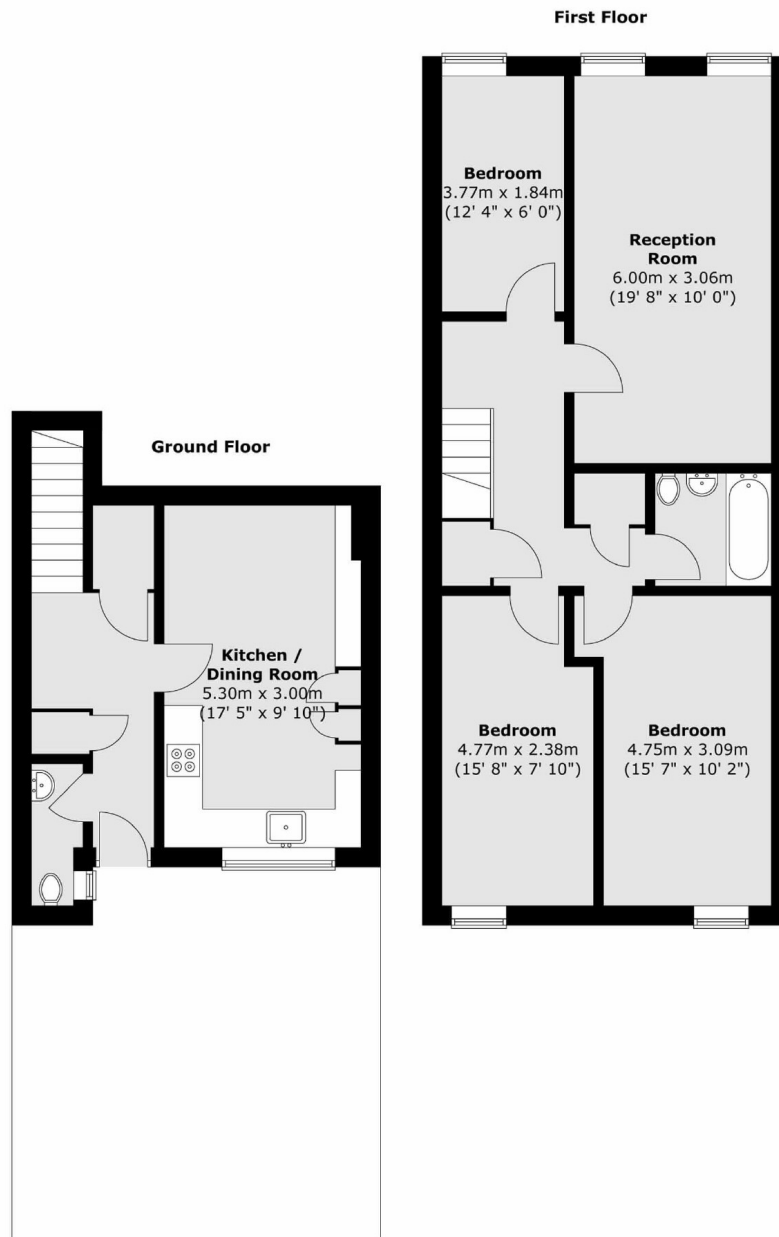
Centrally located on St. Pauls Road is this three double bedroom flat is split over two levels. Well presented throughout, this spacious apartment features separate kitchen & living, over 1,000sqft of living space and a generous private garden.

Ideally located a short walk from the boutique delis, popular shops and cafés of Newington Green. Canonbury station (Overground) is close by, as well as having Highbury and Islington station (Victoria and Overground) at the end of the road. Numerous bus routes provide links to The City, The West End and beyond.

Features

- Three Bedrooms
- Separate Kitchen
- Private Garden
- Split Level
- Private Entrance
- Over 1,000sqft
- Chain Free
- On Street Permit Parking

Crowline Walk, London, N1



Total area (approx.) : 94.1 sq. m (1013 sq. ft)

Dexters

Islington
76 Upper Street
London
N1 0NU
Sales
020 7483 6373

Energy Rating: TBC. We aim to make our particulars both accurate and reliable. However they are not guaranteed; nor do they form part of an offer or contract. If you require clarification on any points then please contact us, especially if you're traveling some distance to view. Please note that appliances and heating systems have not been tested and therefore no warranties can be given as to their good working order.

 **RICS** | Regulated
Estate Agent
and Letting Agent

[dexters.co.uk](https://www.dexters.co.uk)