



Fieldway Crescent, N5

£650,000

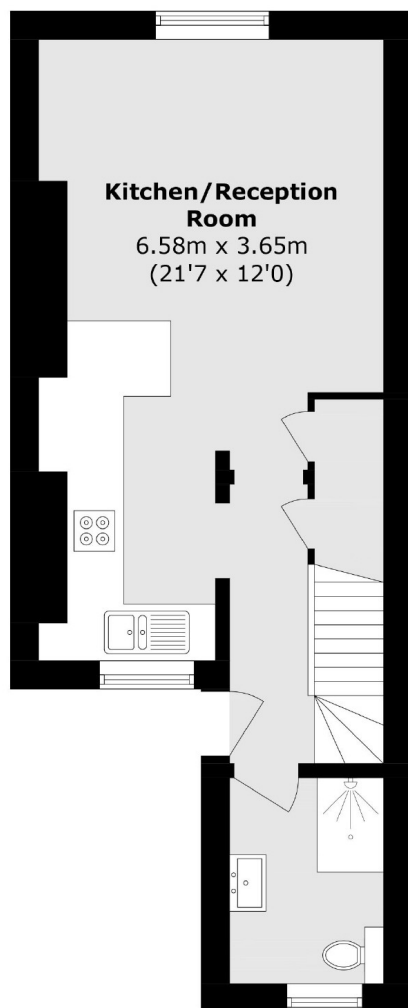
A well presented two bedroom apartment arranged over the first and second floors of the Gate House. This home benefits from an abundance of natural light, an open plan kitchen living area and a private entrance. The property is accessed through a gated entry system and is ideally located next to Highbury Fields with its open spaces and tennis courts.

The Gate House is located on a tree-lined, residential street in the heart of Highbury. Highbury & Islington Station (Victoria Line, National Rail and Overground) is just across the park around a quarter mile away. The property is also equidistant between both Upper Street and Highbury Barn, with an array of boutique shops, deli's and eateries.

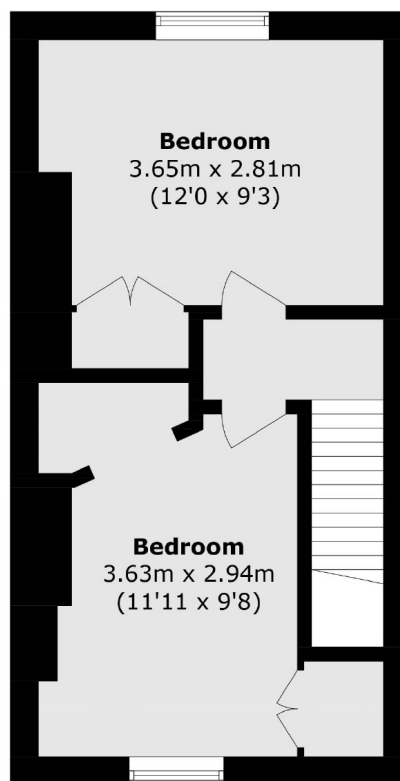
Features

- Gated Entry System
- Split Level
- Two Bedrooms
- Private Entrance
- Next to Highbury Fields

Fieldway Crescent, London, N5



First Floor



Second Floor

Total area (approx.): 57.2 sq. m (615.7 sq. ft)