

Highbury Park, N5

£900,000

A two bedroom, split level flat set within a Georgian conversion in the heart of Highbury. Set across the top two floors, this home offers over 1,000sqft of living space with two double bedrooms, separate eat-in kitchen and access to a large communal garden and terrace. The property is being offered chain free and with a share of the freehold.

On the doorstep of Highbury Barn, with a village-like charm and a variety of independent shops and cafés. Highbury & Islington Station (Victoria and Overground) is within easy reach, as well as being in close proximity to several bus routes which take you to The City or the West End. For green space, Highbury Fields is just a short walk away.

Features

- Top Floor
- Share of Freehold
- Two Bedrooms
- Separate Kitchen
- Chain Free
- Communal Garden

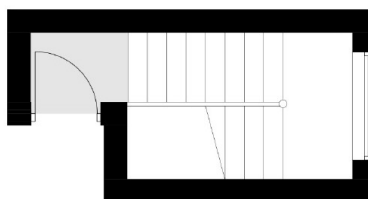
Highbury Park, London, N5



Third Floor



Second Floor



First Floor

Total area (approx.): 93.6 sq. m (1,007.5 sq. ft)