



## Belgrade Road, N16

£6,000 Per calendar month

This stunning four bedroom house situated on a beautiful residential street in Stoke Newington. Set over three floors, the house has been beautifully designed throughout with custom furnishings, a bright kitchen diner with sleek bi-folding doors which seamlessly connect the kitchen to the private secluded garden.

This home would suit a family looking for a spacious home or a professional couple wanting a versatile space perfect for entertaining. Features such as access to the cellar & a bright reception room with high ceilings, original wooden flooring, fireplace and large south facing bay windows with bespoke shutters.

First floor includes master bedroom with ample storage, further double bedroom with views of the rear garden, third bedroom and top floor fourth bedroom with fitted storage and fully tied bathroom suite with walk in shower and free standing bath.

Belgrade Road is just a short walk to Stoke Newington Overground Station as well as Clissold Park and an array of shops, restaurants, cafés and other local amenities.

### Features

Four Bedroom House  
Private Secluded Garden  
Period Property  
Great Location  
Furnished  
Ample Storage





## Belgrade Road, N16

This stunning four bedroom house situated on a beautiful residential street in Stoke Newington. Set over three floors, the house has been beautifully designed throughout with custom furnishings, a bright kitchen diner with sleek bi-folding doors which seamlessly connect the kitchen to the private secluded garden.

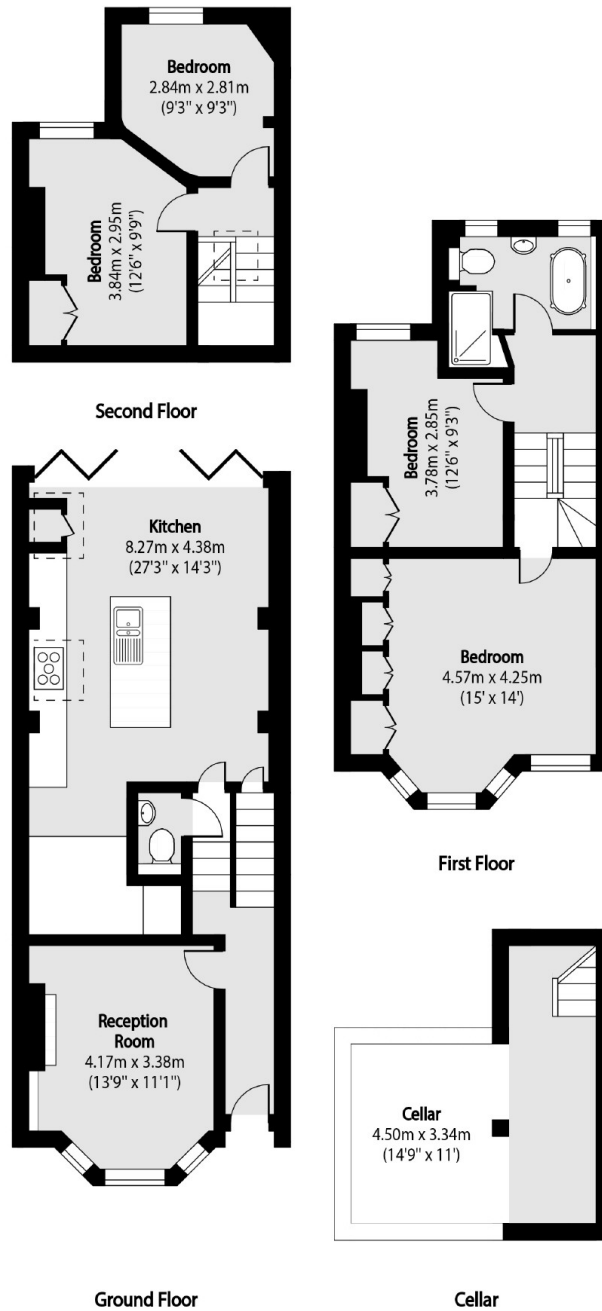
This home would suit a family looking for a spacious home or a professional couple wanting a versatile space perfect for entertaining. Features such as access to the cellar & a bright reception room with high ceilings, original wooden flooring, fireplace and large south facing bay windows with bespoke shutters.

First floor includes master bedroom with ample storage, further double bedroom with views of the rear garden, third bedroom and top floor fourth bedroom with fitted storage and fully tied bathroom suite with walk in shower and free standing bath.





# Belgrade Road, London, N16



Total area (approx): 125.11 sq m (1347 sq. ft)

(Excluding Cellar)

Cellar Total area (approx): 9.24 sq m (99 sq. ft)

## Dexters

Islington  
76 Upper Street  
London  
N1 0NU  
Lettings  
020 7483 6374

Energy Rating: D. We aim to make our particulars both accurate and reliable. However they are not guaranteed; nor do they form part of an offer or contract. If you require clarification on any points then please contact us, especially if you're traveling some distance to view. Please note that appliances and heating systems have not been tested and therefore no warranties can be given as to their good working order.

 **RICS** | Regulated  
Estate Agent  
and Letting Agent

[dexters.co.uk](https://www.dexters.co.uk)